



**MCI**  
**D4505**

**B O D Y   P A R T S   C A T A L O G**

# Eliminate Clouding Crazing Plastic . . .

## *Convert to Crystal Glass Headlights!!!*

### Glass vs. OEM Plastic Headlamps

- Glass Never Clouds or Crazes
- Hi Performance Long Life HB2 Halogen Lamps
- Increased Driver Visibility
- Increased Passenger Safety
- Lower Maintenance

### Easy to Install

- No Modifications Required
- Attach Directly to OEM Brackets
- DOT/SAE Compliant

### Kit Utilizes:

- Existing OEM Headlight Buckets
- Existing OEM Front Indicator Lamps
- Existing OEM Amber Turn Signal Lamps

### Conversion Kit Includes:

- (2) Paintable Hi Impact ABS Bezels
- (2) Hi Performance Glass Lens Headlamps
- (2) HB2 Bulb Adapters
- Mounting Hardware



Plastic Headlamps

Plastic Bezels



Crystal Glass Headlamps

Paintable Bezels

**Kit Part No. 07-07-6070CKP**

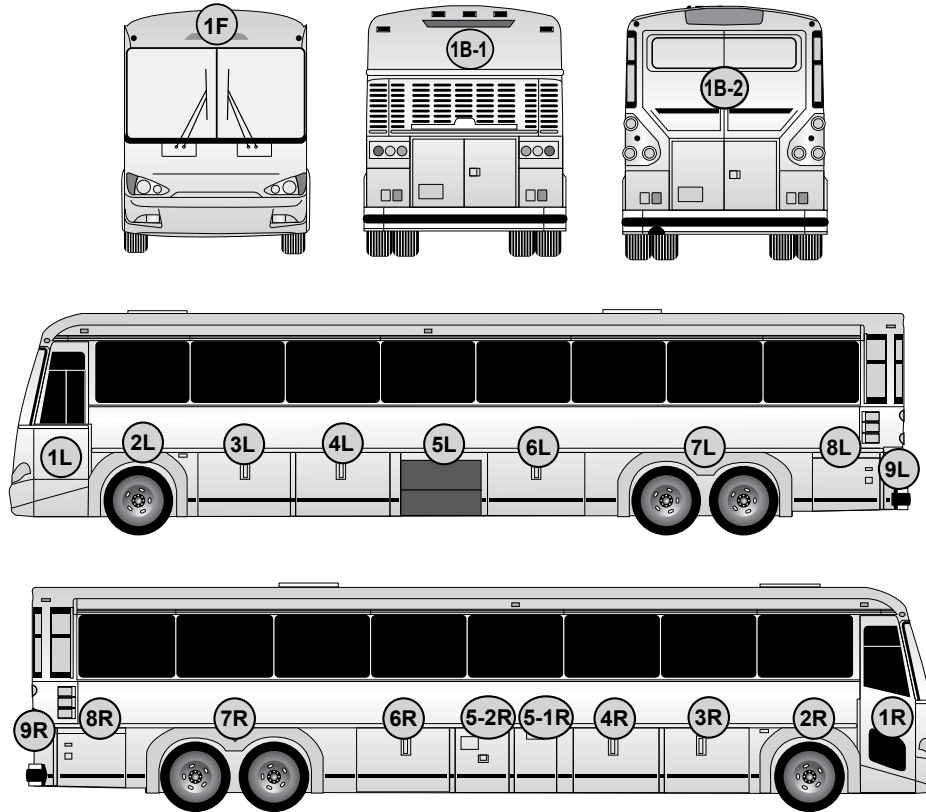
### Replacement Parts for Crystal Glass Conversion Kits

07-07-6070SLPL	Bezel – LH Paintable
07-07-6065GLS	Headlamp – 7" Glass w/HB2 Bulb LH
07-07-6070SLPR	Bezel – RH Paintable
07-07-6069GLS	Headlamp – 7" Glass w/HB2 Bulb RH
HB2/9007	Adapter – Headlamp to OEM Harness



# Location Key for MCI D4505

## Door Assemblies, Body Panels, Rub Rails & Components



**L & R** following each location number indicates left & right.  
**F & B** indicates front & back.

## INDEX

<b>Parts &amp; Components</b>	<b>Page</b>
Baggage Door Components	8
Frame repair Sections	8
Rub Rails, Belt & Sash	28 & 29
Parts List	30

### Front & Back of Bus

<b>Location</b>	<b>Page</b>
1F	2
1B-1	3-4
1B-2	5-6

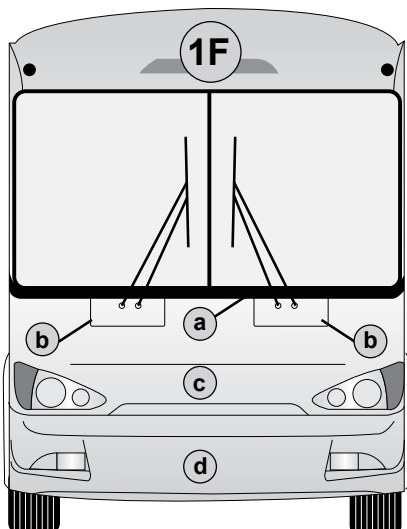
### Left Side of Bus

<b>Location</b>	<b>Page</b>
1L	9
2L	10
3L	11
4L	12

5L	13
6L	14
7L	15
8L	16
9L	17

### Right Side of Bus

<b>Location</b>	<b>Page</b>
1R	18
2R	19
3R	20
4R	21
5-1R	22
5-2R	23
6R	24
7R	25
8R	26
9R	27



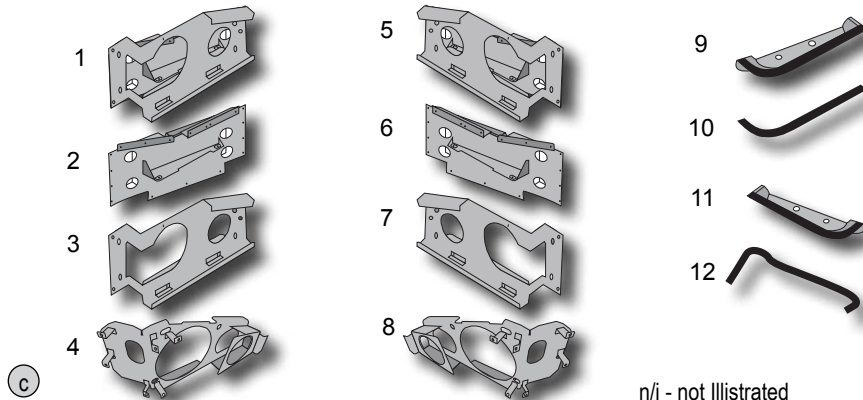
## Location 1F

## Location 1F

a b c d

### Front Panels, Trim, Brackets & Conversions

#### Headlight Brackets and Components



n/i - not illustrated

1) 03-33-1684	Headlight Assy, Bracket, RH	9) 03-33-1696	Cover Assy - Headlight RH
2) 03-33-1630	Plate - Headlight, Closeout, RH	10) 24-51-0013	Trim Lok - 3/16, 5 3/94 Long, LH/RH
3) 03-33-1649	Plate - Floating Assy, RH	11) 03-33-1695	Cover Assy - Headlight LH
4) 03-33-1629	Plate Assy - Retainer, RH	12) 24-51-0049	Seal - 1/2 x 5/8 EPDM, LH/RH
5) 03-33-1685	Headlight Assy, Bracket, LH	n/i 03-33-1686	Spring - Headlight, Adj, Diagonal (x2)
6) 03-33-1631	Plate - Headlight, Closeout, LH	n/i 03-33-1687	Spring - Headlight, Large (x4)
7) 03-33-1632	Plate - Floating Assy, LH	n/i 03-33-1743	Clamp Assembly (x2)
8) 03-33-1628	Plate Assy - Retainer, LH		

#### Front Fascia Molding



- a 03-20-1088 Fascia Below Windshield / Fiberglass

#### Windshield Wiper Motor Panel



- b 3L-20-541 Panel - Wiper RH/LH [59439]

#### Front Cap, Closeout Plate, and Insulation



- c 03-35-1845 Panel Assy - Front Exterior, Lower



- 03-33-1691 Closeout - Front Cap



- 03-33-1692 Closeout - Insulation, Foam



- 03-33-1689 Foam - Closeout, Headlight

#### Front Bumper



- d 03-21-1388 Bumper Assy  
03-21-1332 Skin Assy - Front Bumper  
07-07-1178 Lamp - Fog LH/RH

## Eliminate Clouding Crazing Plastic . . . Convert to Crystal Glass Headlights!!

#### Glass vs. OEM Plastic Headlamps

- Glass Never Clouds or Crazes
- Hi Performance Long Life HB2 Halogen Lamps
- Increased Driver Visibility
- Increased Passenger Safety
- Lower Maintenance

#### Easy to Install

- No Modifications Required
- Attach Directly to OEM Brackets
- DOT/SAE Compliant

#### Kit Utilizes:

- Existing OEM Headlight Buckets
- Existing OEM Front Indicator Lamps
- Existing OEM Amber Turn Signal Lamps

#### Conversion Kit Includes:

- (2) Paintable Hi Impact ABS Bezels
- (2) Hi Performance Glass Lens Headlamps
- (2) HB2 Bulb Adapters
- Mounting Hardware

#### Replacement Parts for Crystal Glass Conversion Kits

07-07-6070SLPL	Bezel - LH Paintable	07-07-6070SLPR	Bezel - RH Paintable
07-07-6065GLS	Headlamp - 7" Glass w/HB2 Bulb LH	07-07-6069GLS	Headlamp - 7" Glass w/HB2 Bulb RH
	HB2/9007	Adapter - Headlamp to OEM Harness	



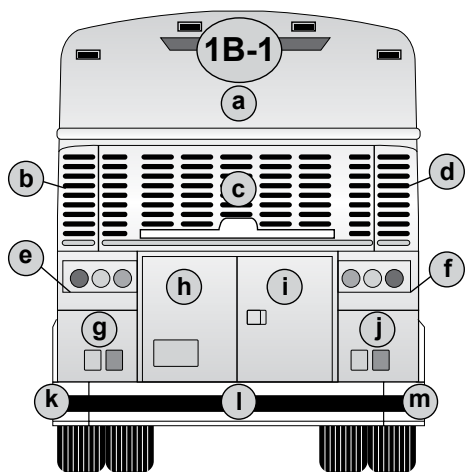
Plastic Headlamps  
Plastic Bezels



Crystal Glass Headlamps  
Paintable Bezels

Kit Part No. 07-07-6070CKP

**Better Than OEM!**



## Location 1B-1

Location 1B-1

a b c d k l m

### Rear Fiberglass Panels, Bumpers & Components - Early Model

#### Exterior Louvered Panels

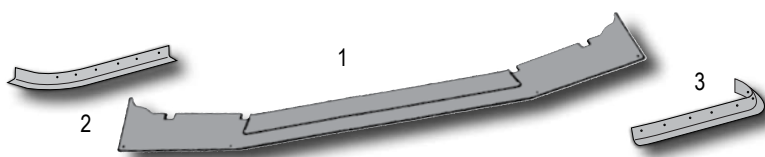


b  
3L-35-1666  
Radiator Inlet - LH w/Full  
Vents / ABS



d  
3L-35-1583  
Radiator Inlet - RH w/Full  
Vents / ABS

#### Rear Energy Absorbing Bumper Components



(1) 3L-21-174 Closing Panel - Top of Rear Energy ABS Bumper  
(2) 3L-21-176 Trim - Closing LH Rear Lower Corners at Bumper  
(3) 3L-21-177 Trim - Closing RH Rear Lower Corners at Bumper  
n/i 19-1-1284 Machine Screw - 1/4-20 x 3/4

#### Exterior Louvered Blower Door



3L-31-1169 Door Assy - Radiator / Fiberglass  
3L-31-2265 Door - Radiator w/Logo Area Plain  
(Option, See illustration Top Left)

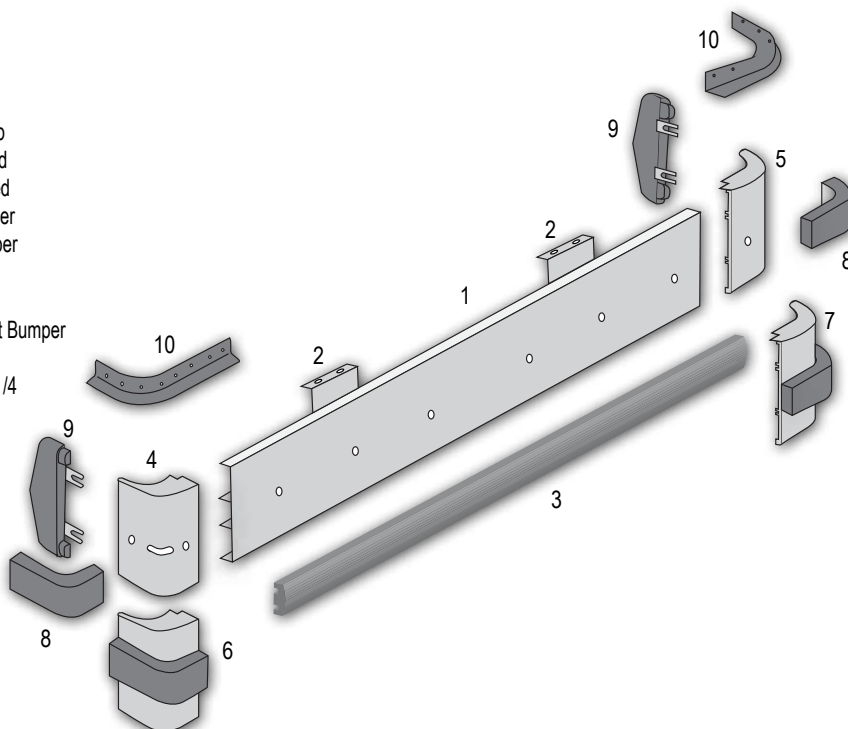
#### Rear Bumper Assemblies k l m

3K-21-3 Bumper Assy - Rear w/Rubber Bumper

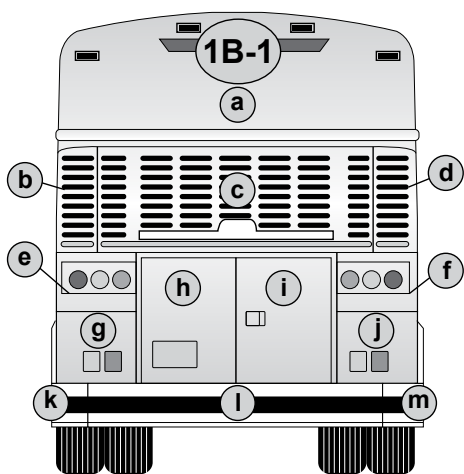
1 3K-21-4 Blade  
2 3R-21-21 U-Bracket  
3 3K-21-5 Retainer and Rub Rail Assembly w/Stud Strip  
4 3G-21-10 Bumperette Assy - LH, Rear w/Holes, Welded  
5 3G-21-13 Bumperette Assy - RH, Rear w/Holes, Welded  
6 3G-21-9SP Bumperette Assy - LH, Rear Welded w/Rubber  
7 3G-21-12SP Bumperette Assy - RH, Rear Welded w/Rubber  
8 3G-21-1 Bumperette Assy - Rubber Rub Rail LH/RH  
9 3L-33-480 Cap - Closing LH/RH Rear Bumperettes  
10 3L-21-160 Trim - Closing LH/RH Rear Lower Corners At Bumper

n/i 3J-33-51 Bolt - Mount Bumperette LH/RH, 3/8-16 x 2 1/4  
n/i 3R-20-14 Washer - Nylon  
n/i 3R-21-9 Spacer - Rubber Bumper  
n/i 3R-21-28 Washer - Nylon  
n/i 3R-21-21 U-Bracket  
n/i 19-2-119 Washer - Fender 3/8 ID x 1-1/4 OD  
n/i 19-2-179 Washer - Nylon  
n/i 19-3-21 Nut - Hex 3/8-16, Grade 5 Zink Plated

n/i - not illustrated







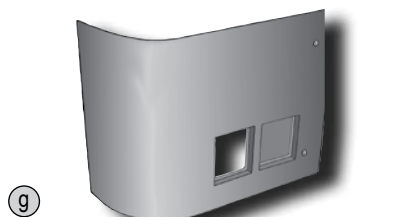
## Location 1B-1

## Location 1B-1

(e) (f) (g) (j)

### Rear Tail Light Panels, Satellite Door Assemblies & Panels - Early Model

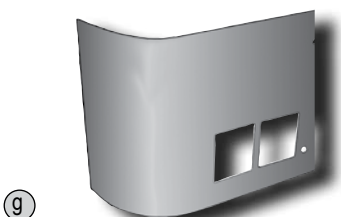
#### Satellite Door Assembly & Panels - Painted [45959]



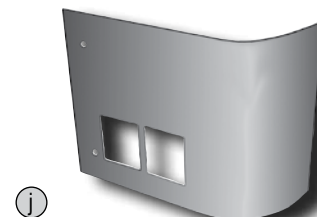
3L-31-2256 Door Assy - RH Satellite



3L-31-2257 Door Assy - RH Satellite



3L-31-2258 Panel - Access LH

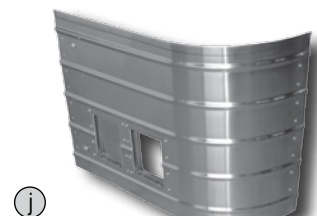


3L-31-2259 Panel - Access RH

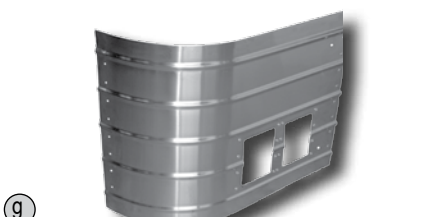
#### Satellite Door Assembly & Panels - Stainless Fluted [45959]



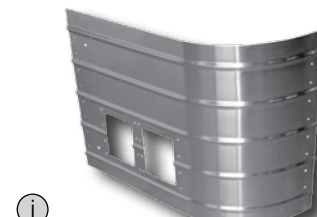
3L-31-2238 Door Assy - LH Air Filter Access w/Reflector



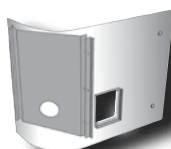
3L-31-2239 Door Assy - RH Compressor Access w/Reflector



3L-31-2244 Panel - LH Air Filter Access w/Reflector



3L-31-2247 Panel - RH Compressor Access w/Reflector



3L-31-1194 Bracket - Door Support LH



3L-31-1250 Bracket - Door Support RH

#### Satellite Door Components

3L-31-1168	Frame - LH/RH
3L-31-1453	Angle - Door Support Mount LH
3L-31-1454	Angle - Door Support Mount RH
3L-31-1196	Pin Locating Plate Assy
3L-31-2240	Mount - Reflector
19-5-1	Dzus Grommet
19-5-7	Dzus Stud
19-5-9	Dzus Spring

#### Fiberglass Tail Light Panels



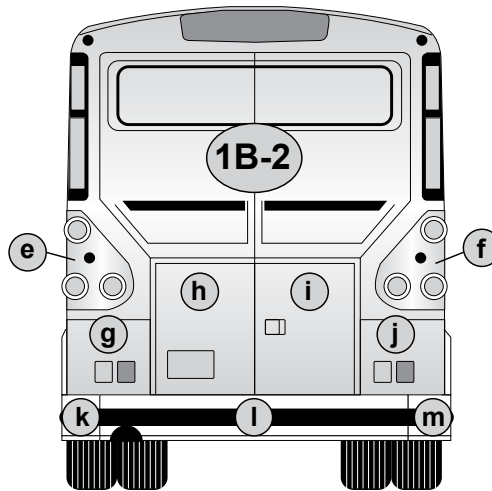
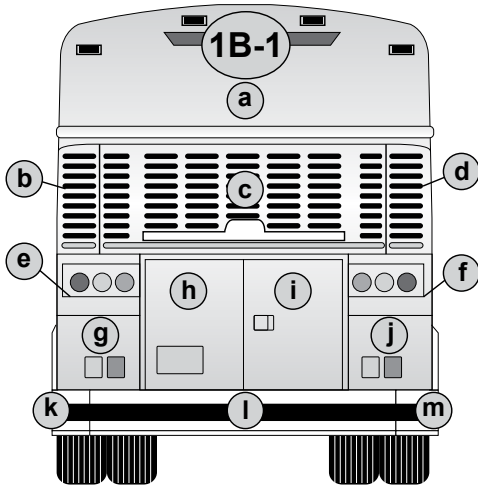
3L-35-2277 Panel - Tail Light LH LED



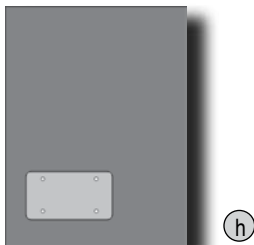
3L-35-2448 Panel - Tail Light RH LED

#### NOTES:

## Rear Engine Doors Paintable Smooth & Stainless Fluted - Early & Late Model

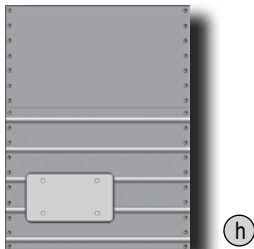


### LH Assemblies & Panels - Paintable



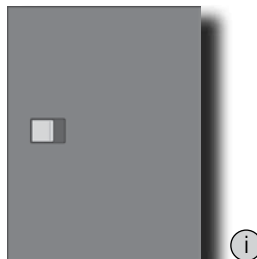
- 3L-31-2392 Door Assy
- 3L-31-2391 Frame
- 3L-31-2389 Panel - Exterior
- 03-31-3164 Door Assy (Painted)
- 3L-31-1586 w/LED LP Light
- 3L-31-1586 Panel - LH Upper

### LH Assembly & Panels - Stainless Fluted



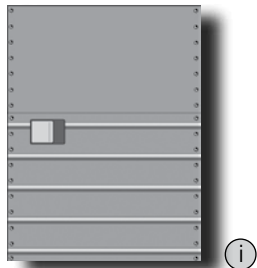
- 3L-31-2393 Door Assy
- 3L-31-2391 Frame Assy
- 3L-31-1596 Panel - Flat Upper(Painted)
- 3L-31-2390 Panel - S/A - Fluted Lower
- 3L-31-2389 Panel - LH
- 03-31-2863 Door Assy - w/LED LP Light

### RH Assemblies & Panels - Paintable



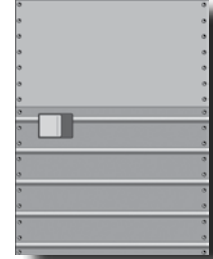
- 3L-31-1152 Door Assy
- 3L-31-1154 Frame Assy
- 3L-31-1159 Panel - Exterior Door

### RH Assembly & Panels - Stainless Fluted



- 3L-31-1602 Door Assy
- 3L-31-1154 Frame Assy
- 3L-31-1587 Panel - Flat Upper (Painted)
- 3L-31-2483 Panel - Fluted Lower

### RH Assemblies & Panels w/Lock - Paintable

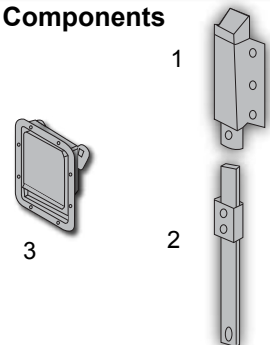


- (i) RH Fluted &
- (i) RH Fluted w/Upper Painted

### Stainless Fluted w/Painted Upper

- 3L-31-1602 Door Assy - w/Flat Panel
- 3L-31-1584 Door Assy - w/Flat Panel
- 3L-31-1154 Frame Assy
- 3L-31-1587 Panel - Flat Upper Painted (Painted)

### RH Door Components



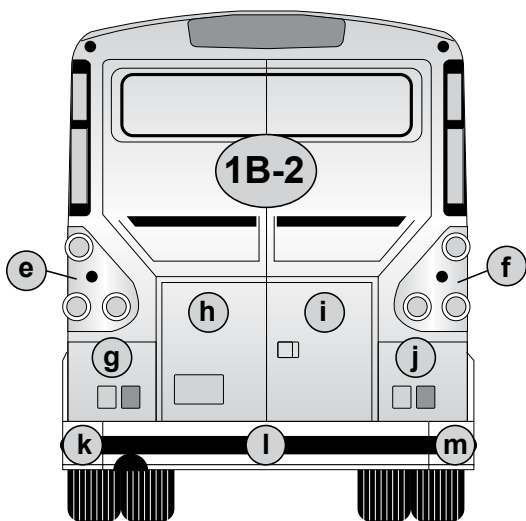
- 1) 3J-30-45 Latch - End Bolt
- 2) 3L-31-1164 Locking Bar - Upper
- 3) 3J-30-15 Latch Assy

## Location 1B-2

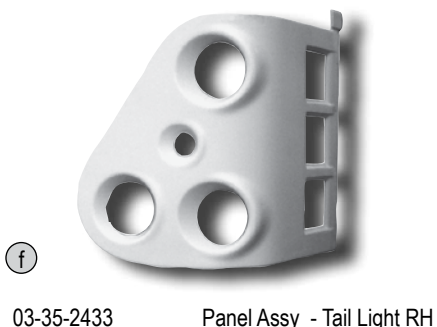
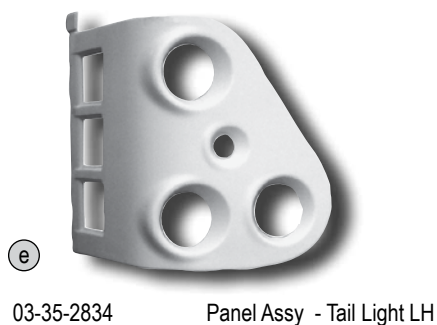
## Location 1B-2

(e) (f) (g) (j)

### Rear Tail Light Panels, Satellite Door Assemblies & Panels - Late Model

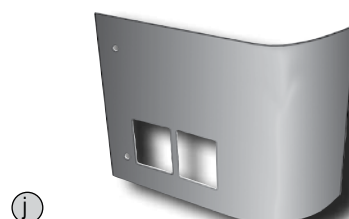
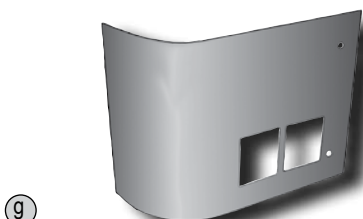
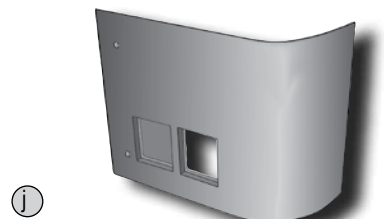
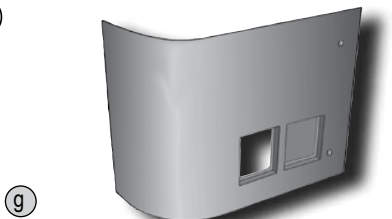


#### Fiberglass Tail Light Panels

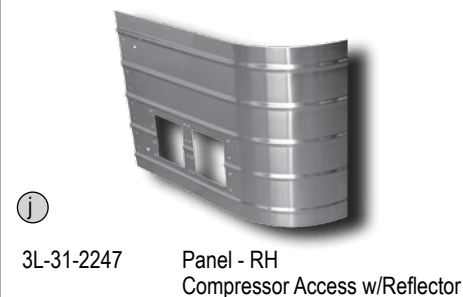
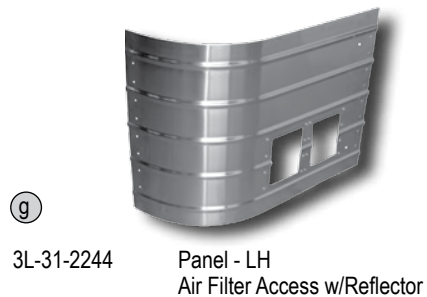


#### NOTES:

#### Satellite Door Assembly & Panels - Painted



#### Satellite Door Assembly & Panels - Stainless Fluted



#### Satellite Door Components

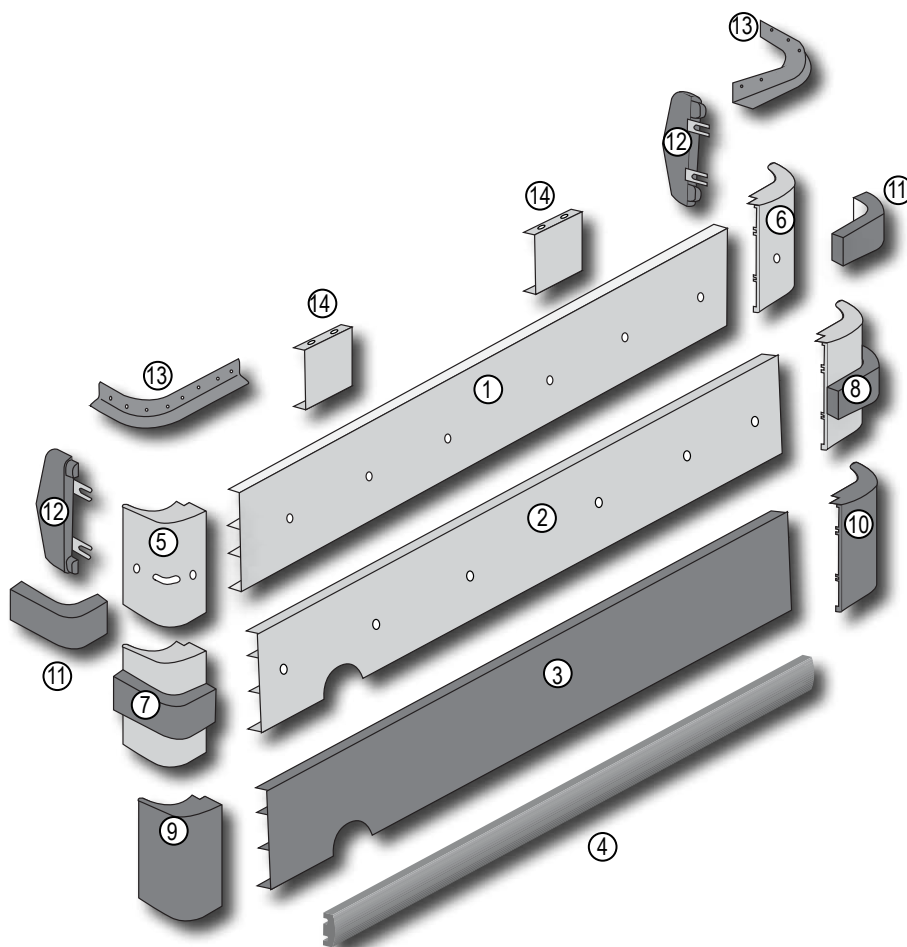
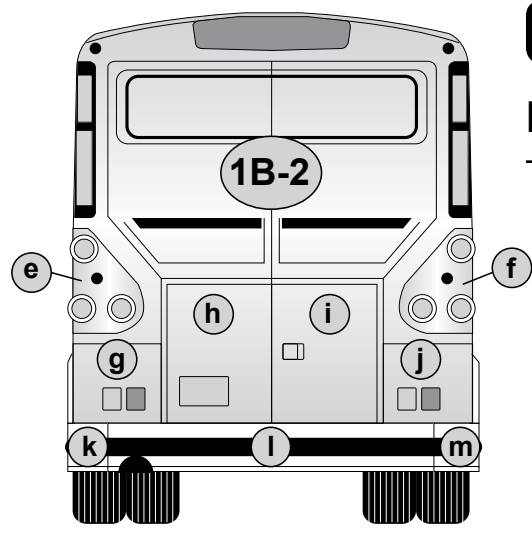
3L-31-1168	Frame - LH/RH
3L-31-1453	Angle - Door Support Mount LH
3L-31-1454	Angle - Door Support Mount RH
3L-31-1196	Pin Locating Plate Assy
3L-31-2240	Mount - Reflector
19-5-1	Dzus Grommet
19-5-7	Dzus Stud
19-5-9	Dzus Spring



# Location 1B-2

Location 1B-2  
(k) (l) (m)

## Rear Bumpers & Components - Late Model



### Rear Bumper Assemblies (k) (l) (m)

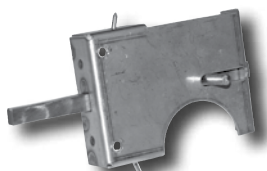
1	3K-21-4	Blade	11	3G-21-1	Bumperette Assy - Rubber Rub Rail LH/RH
n/i	03-21-1390	Bumper Assy - Rear w/Rubber Bumper (DPF Option)	12	3L-33-480	Cap - Closing LH/RH Rear Bumperettes
2	03-21-1391	Blade - Rear Bumper w/Holes (DPF Option)	13	3L-21-160	Trim - Closing LH/RH Rear Lower Corners At Bumper
3	03-21-1461	Blade Assy - Rear Bumper, w/o Holes, Black Anodized	14	3R-21-21	U-Bracket
3	03-21-1463	Blade - Rear Bumper, w/o Holes, Black Anodized	n/i	3J-33-51	Bolt - Mount Bumperette LH/RH, 3/8-16 x 2 1/4
4	3K-21-5	Retainer - Rub Rail Assy w/Stud Strip	n/i	3R-20-14	Washer - Nylon
5	3G-21-10	Bumperette Assy - LH, Rear w/o Rub Rail, Welded	n/i	3R-21-9	Spacer - Rubber Bumper
6	3G-21-13	Bumperette Assy - RH, Rear w/o Rub Rail Welded	n/i	3R-21-28	Washer - Nylon
7	3G-21-9SP	Bumperette Assy - LH, Rear Welded w/Rubber	n/i	19-2-119	Washer - Fender 3/8 ID x 1-1/4 OD
8	3G-21-12SP	Bumperette Assy - RH, Rear Welded w/Rubber	n/i	19-2-179	Washer - Nylon
9	03-21-1458	Bumperette Assy - LH, Rear w/o Holes, Welded, Black Anodized	n/i	19-3-21	Nut - Hex 3/8-16, Grade 5 Zinc Plated
10	03-21-1456	Bumperette Assy - RH, Rear w/o Holes, Welded, Black Anodized			

n/i - Not Illustrated

### NOTES:



3L-29-1110 Wheelchair Dock Light Housing



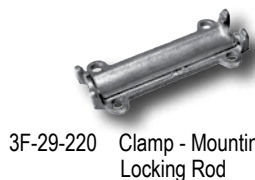
3J-32-94 Lock Body Assy



3L-29-35 Pocket S/A - Complete, Bag Door  
3L-29-70 Handle Only  
3L-29-71 Handle Assy - Locking Style  
3M-29-90 Rod - Mounting, Bag Door Handle



3F-29-107 LH Lower Door Lock  
3F-29-108 RH Lower Door Lock



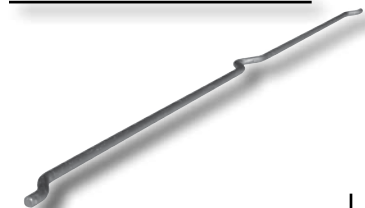
3F-29-220 Clamp - Mounting, Locking Rod



3L-29-21 Seal - Baggage Door



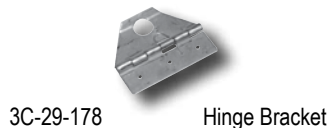
3F-29-109 Casting - Lower Lock, LH  
3F-29-110 Casting - Lower Lock, RH



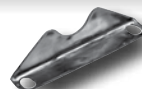
3F-29-216 Rod - Locking, Large



3F-29-257 Bearing - Base, Lock Rod  
3F-29-258 Bearing - Cap, Lock Rod



3C-29-178 Hinge Bracket



3F-29-221 Stop - Locking Rod, Baggage Door



3F-29-219 Bumper - Baggage Door Assy



3F-29-187 Bearing - Base, Swing Tube  
3F-29-186 Bearing - Cap, Swing Tube

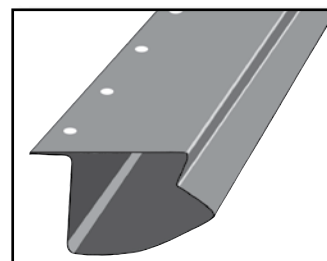


3M-29-108 Eye Bolt  
19-7-48 Yoke - Handle Attaching

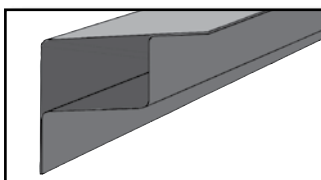


3L-29-30 Panel - Inner, Baggage Door

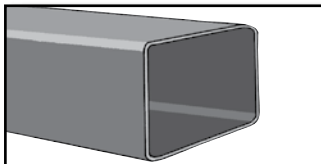
## Frame Repair Sections



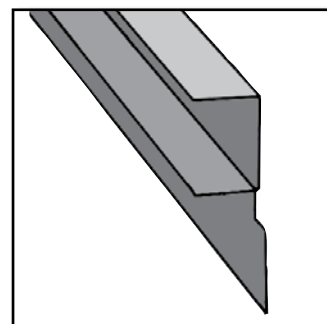
3L-59-59X Skirt Rail 102C-102D (5 ft. Section)



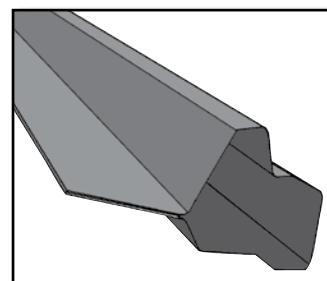
3L-59-63X Plain Floor Frame (5 ft. Section)



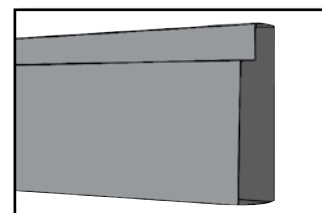
3L-59-738 Tube - Rear Bulkhead to Rear Post (5 ft. Section)



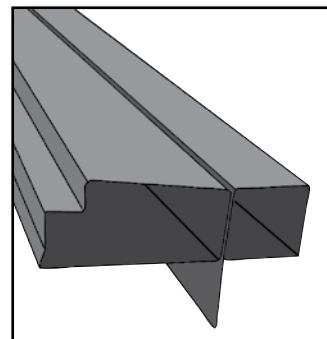
3R-59-108 Channel - Above Battery Door



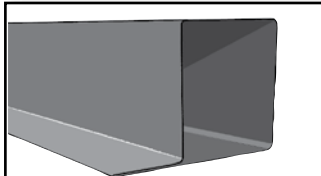
3L-59-699 Post Assy



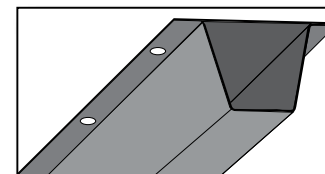
3L-59-576 Post - Rr. of Baggage Compartment #3 LH  
3L-59-577 Post - Rr. of Baggage Compartment #3 RH  
3L-59-578 Post - Rr. Section RH & LH  
3L-59-698 Post - Front of Battery Door



3L-59-583 Post Assy (5 ft. Section)



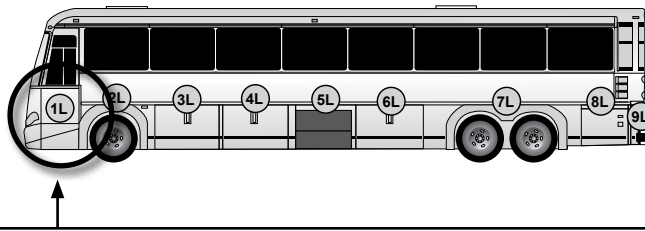
3L-76-30X Below Side Windows (5 ft. Section)



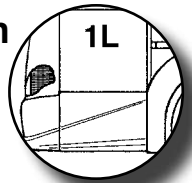
3L-59-592 Rail - Skid Under Baggage Floor (61.875 in. Section)

# Location 1L

## Front Junction Box & Side Service Doors

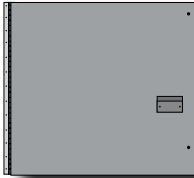


Location



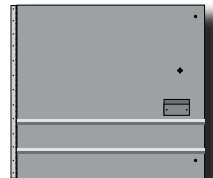
### Junction Box Access Door Panels - Paintable Smooth

3L-31-756	Door Assy - Front Junction Box Access
3L-31-710	Panel - Exterior
3L-31-717	Door - Interior
3L-32-43	Recessed Grip - Door, Exterior (Rubber)
19-1-5	Dzus Grommet, Finish Dzus Stud Hole
19-5-7	Dzus Stud, Latch Door To Frame
19-5-9	Dzus Spring, Latching



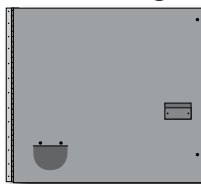
### Junction Box Access Door Panels - Stainless Fluted

3L-31-757	Door Assy - Front JBox
3L-31-709	Panel



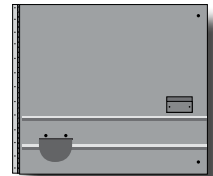
### Front Junction Box Door Panels with In-Station Lights

3L-31-748	Door Assy - Front JBox Painted, No Key
3L-31-737	Panel Assy - w/1 Receptacle
3L-31-718	Panel - Door Interior w/One Receptacle
7R-8-128	Socket



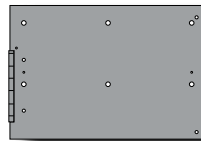
### Front Junction Box Door Panels with In-Station Lights

3L-31-749	Door Assy - Front JBox w/One Receptacle Cover
3L-31-738	Panel Assy - w/1 Receptacle Cut-Out



### Front Side Service Door Assemblies - Paintable Smooth

03-31-2989	Door Assy
3L-31-1595	Panel S/A - Exterior
3L-31-49	Frame S/A - Welded
3G-31-27	Hinge - Front Edge of Door

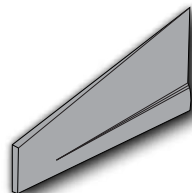


03-31-3043	Door Assy - Front Side Service
03-31-3041	Door S/A - Front Side Service
03-31-2428	Panel - Exterior
03-31-2433	Frame Assy
03-31-2439	Hinge Assy
03-31-2450	Plate Assy



### Fiberglass Rub Rail Assembly

03-31-2432	Service Door LH
------------	-----------------



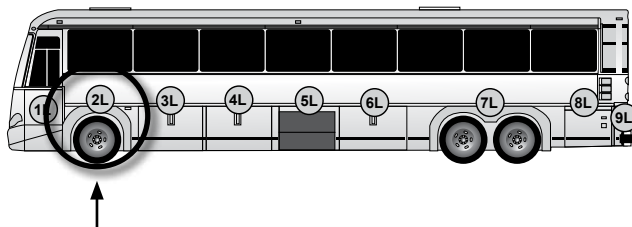
3L-31-223	Bracket S/A - Front Side Service Door
3L-31-224	Bracket Only
19-5-9	Spring - Dzus (.225)
SSD46SSBS	Rivet



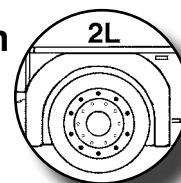
## NOTES:

## Location 2L

### Front Wheelhousing Panels



Location



#### Panel - Paintable Smooth



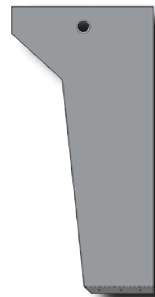
3L-35-4

Panel - Above Front Whlhsg



3L-35-2

Panel



3L-35-600

Panel

3L-35-596 Panel - Rear of Front Whlhsg

#### Panel - Stainless Fluted



3J-35-66

Panel - Above Front Whlhsg



3J-35-56

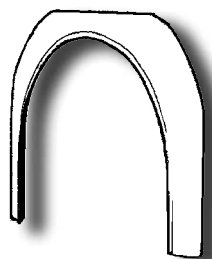
Panel



3L-35-614

Panel

#### Front Fender



03-35-1958

Fender Assy - LH Front / Fiberglass



03-23-1017FT

Seal - Fender

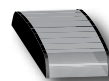
#### 5" Rub Rail Assembly



03-20-1411

Rear of RH Front Whlhsg

#### 2" Aluminum Rub Rail Assembly

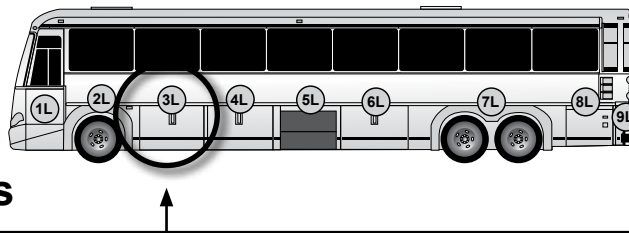


03-20-1047

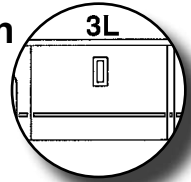
Assy - Rear of Front Whlhsg

# Location 3L

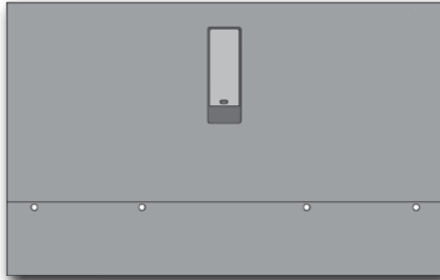
## Baggage Doors & Adjacent Body Panels



Location

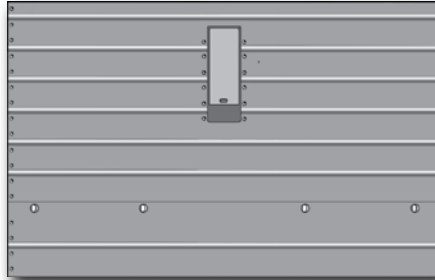


### Baggage Doors - Paintable Smooth



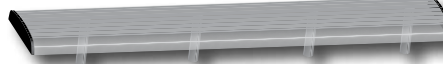
3L-29-761 Door Assy - [50129]  
 3L-29-32 Panel - Upper  
 3L-29-31 Panel - Lower

### Baggage Doors - Stainless Fluted



3L-29-766 Door Assy - [50129]  
 3L-29-74 Panel - Upper  
 3L-29-75 Panel - Lower

### 2" Aluminum Rub Rail Assembly



03-20-1027 Baggage Door

### Adjacent Body Panels & Rub Rails



**Paintable Smooth**  
 3L-35-600 Panel  
 3L-35-596 Panel - Rear of Front Whlsg

3L-35-8 Panel - Between Bag & Rear of Battery



**Stainless Fluted**  
 3L-35-614 Panel S/A - Rear of LH Front Whlsg

3L-35-157 Panel - Between Bag Doors



### NOTES:

### 5" Rub Rail

03-20-1141 Rear of Front Whlsg



3G-20-109 Between Bag Doors



### 2" Aluminum Rub Rail Assembly

03-20-1047 Rear of Front Whlsg



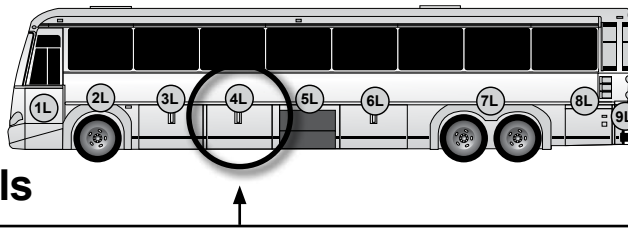
03-20-1034 Between Bag Doors



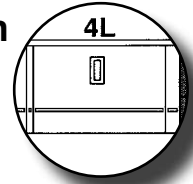


## Location 4L

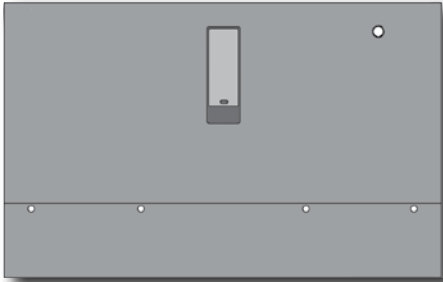
### Baggage Doors & Adjacent Body Panels



## Location

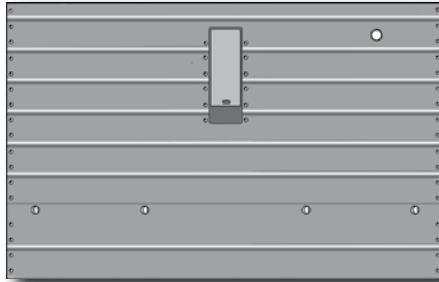


#### Baggage Doors - Paintable Smooth



- 03-29-1697 Door Assy - Bay #2 LH w/Turn Lamp
- 3L-29-149 Panel - Upper LH
- 3L-29-31 Panel - Exterior Lower

#### Baggage Doors - Stainless Fluted



- 3L-29-768 Door Assy - w/Turn Lamp
- 3L-29-130 Panel - Upper LH w/Turn Lamp Cut-Out
- 3L-29-75 Panel - Lower

#### Bag Door Components

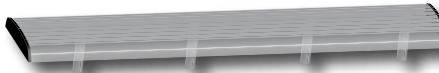
- 3F-29-107 Bracket - Latch, Casting, LH, Lower Door Lock
- 3F-29-108 Bracket - Latch, Casting, RH, Lower Door Lock
- 3F-29-186 Bearing - Cap, Swing Tube
- 3F-29-187 Bearing - Base, Swing Tube
- 3F-29-216 Rod - Locking, Galvanized
- 3F-29-219 Bumper - Baggage Door Assy
- 3F-29-220 Clamp - Mounting, Lock Rod
- 3F-29-221 Stop - Locking Rod, Baggage Door
- 3F-29-257 Bearing - Base, Lock Rod
- 3F-29-258 Bearing - Cap, Lock Rod
- 3L-29-21 Seal - Baggage Door
- 3L-29-30 Panel - Inner, Baggage Door
- 3L-29-61 Pocket Assy - Complete
- 3L-29-70 Handle Only - Baggage Door
- 3L-29-71 Handle Assy - Baggage Door Complete
- 3L-29-1167 Frame S/A - Welded
- 3M-29-108 Eye Bolt

#### 5" Rubber Rub Rail Components



- 3L-29-56 Rub Rail Assy - Rubber
- 3L-29-59 Rubber - Rub Rail
- 3L-29-58 Mounting Channel - Rub Rail
- 3G-20-10 End Cap - Rubber Rub Rail
- 3G-29-18 End Cap - Mounting Plate
- 3R-20-14 Washer - Nylon
- 3J-33-50 Bolt - Mount Extrusion to Doors

#### 2" Aluminum Rub Rail Assembly



- 03-20-1027 Baggage Door

#### Adjacent Body Panels & Rub Rails

##### Paintable Smooth

- 3L-35-8 Panel - Between Bag Doors

- 3L-35-595 Panel - Front of Condenser Door

##### Stainless Fluted

- 3L-35-157 Panel - Between Bag Doors

- 3L-35-618 Panel - Front of Condenser Door

#### 5" Rub Rails

- 3G-20-109 Between Bag Doors

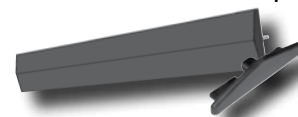
- 3L-20-281 Front of Condenser Dr.

#### 2" Aluminum Rub Rail Assembly

- 03-20-1034 Between Bag and Condenser Doors

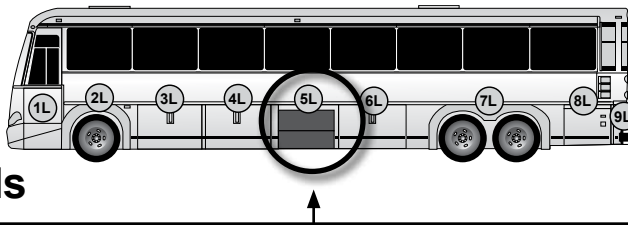
## NOTES:

See page 28-29 for all Rubrail Assemblies & Components.



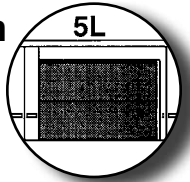
## Location 5L

### Condenser Door & Adjacent Body Panels

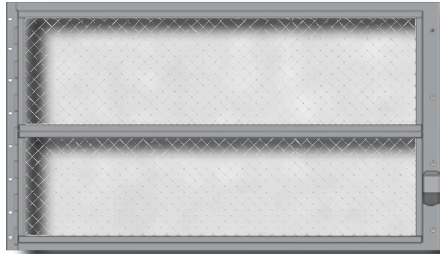


Location

5L



#### Door Assembly - Paintable



3L-31-5	Door Assy - Condenser
3L-31-6	Screen S/A - Lower
3L-31-7	Screen S/A - Upper
3L-31-8	Handle S/A - Condenser Door

#### NOTES:

#### Adjacent Body Panels & Rub Rails

##### Above Condenser Panel Paintable Smooth



3L-35-19 Panel

##### Above Condenser Panel Stainless Fluted



3L-35-621 Panel

##### Paintable Smooth

3L-35-595 Panel -  
Front of Condenser  
Door

3L-35-594  
Panel - Rear of  
Condenser  
Door

##### Stainless Fluted

3L-35-618  
Panel - Front of  
Condenser  
Door

3L-35-165  
Panel - Rear  
of Condenser  
Door

#### 5" Rub Rails

3G-20-108  
Rear of  
Condenser  
Door



3L-20-281  
Front of  
Condenser  
Door



#### 2" Aluminum Rub Rail Assembly

03-20-1034  
Rear of  
Condenser  
Door

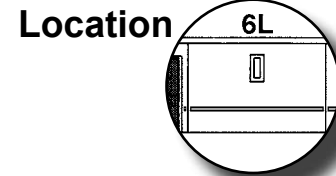
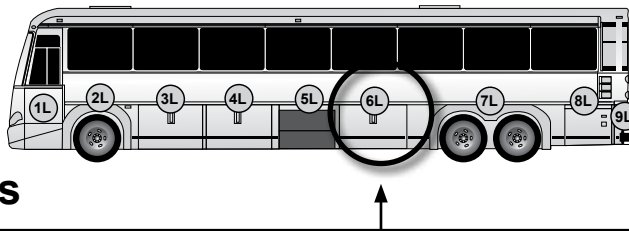


03-20-1137  
Front of  
Condenser  
Door

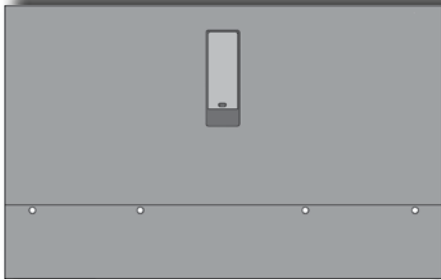


## Location 6L

### Baggage Doors & Adjacent Body Panels

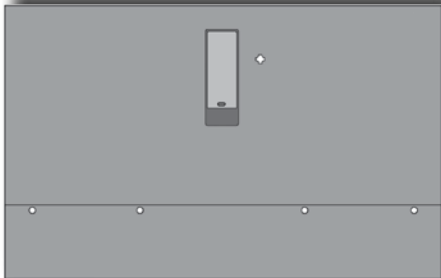


#### Baggage Doors - Paintable Smooth



- 3L-29-761 Door Assy
- 3L-29-32 Panel - Exterior Upper
- 3L-29-31 Panel - Exterior Lower

#### Baggage Doors - Paintable Smooth

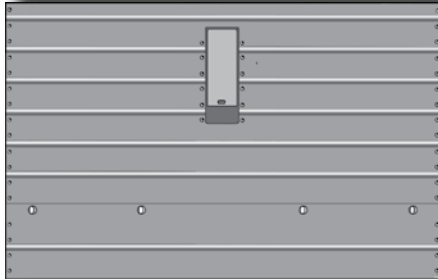


- 3L-29-69 Door Assy - Bay #1 or #3 w/Key Lock
- 3L-29-68 Panel - Upper w/Lock
- 3L-29-31 Panel - Exterior Lower

#### Bag Door Components

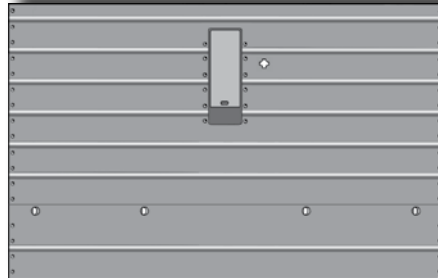
- 3F-29-107 Bracket - Latch, Casting, LH, Lower Door Lock
- 3F-29-108 Bracket - Latch, Casting, RH, Lower Door Lock
- 3F-29-186 Bearing - Cap, Swing Tube
- 3F-29-187 Bearing - Base, Swing Tube
- 3F-29-216 Rod - Locking, Galvanized
- 3F-29-219 Bumper - Baggage Door Assy
- 3F-29-220 Clamp - Mounting, Lock Rod
- 3F-29-221 Stop - Locking Rod, Baggage Door
- 3F-29-257 Bearing - Base, Lock Rod
- 3F-29-258 Bearing - Cap, Lock Rod
- 3L-29-21 Seal - Baggage Door
- 3L-29-30 Panel - Inner, Baggage Door
- 3L-29-61 Pocket Assy - Complete
- 3L-29-70 Handle Only - Baggage Door
- 3L-29-71 Handle Assy - Baggage Door Complete
- 3L-29-1167 Frame S/A - Welded
- 3M-29-108 Eye Bolt

#### Baggage Doors - Stainless Fluted



- 3L-29-766 Door Assy
- 3L-29-74 Panel - Upper
- 3L-29-75 Panel - Lower

#### Baggage Doors - Stainless Fluted



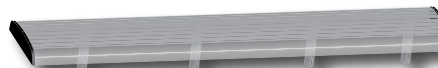
- 3L-29-81 Door Assy - Bay #1 or #3 w/Key Lock
- 3L-29-82 Panel - Upper w/Lock
- 3L-29-75 Panel - Lower

#### 5" Rubber Rub Rail Components



- 3L-29-56 Rub Rail Assy - Rubber
- 3L-29-59 Rubber - Rub Rail
- 3L-29-58 Mounting Channel - Rub Rail
- 3G-20-10 End Cap - Rubber Rub Rail
- 3G-29-18 End Cap - Mounting Plate
- 3R-20-14 Washer - Nylon
- 3J-33-50 Bolt - Mount Extrusion to Doors

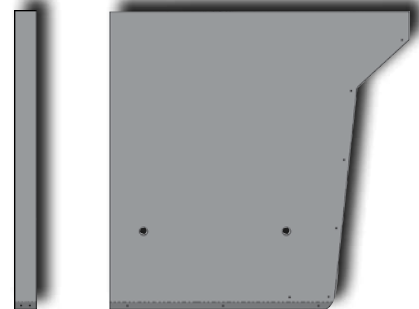
#### 2" Aluminum Rub Rail Assembly



- 03-20-1027 Baggage Door

#### Adjacent Body Panels & Rub Rails

##### Paintable Smooth



- 3L-35-594 Panel - Rear of Condenser Door
- 3L-35-598 Panel - Front of LH Rear Whlshg

##### Stainless Fluted



- 3L-35-165 Panel - Rear of Condenser Door
- 3L-35-609 Panel - Front of LH Rear Whlshg

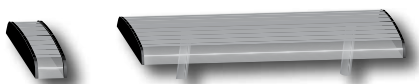
#### 5" Rub Rail



- 3G-20-108 Rear of Condenser Door
- 03-20-1163 Front of LH Rear Whlshg

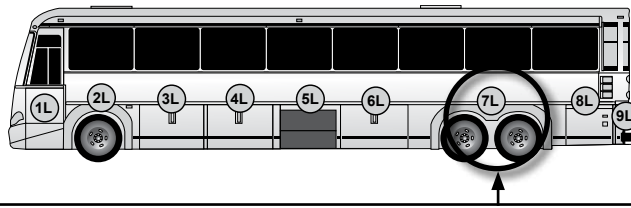
#### 2" Aluminum Rub Rail Assembly

- 03-20-1034 Rear of Condenser Door
- 03-20-1091 Front of LH Rear Whlshg

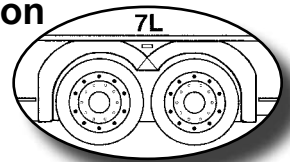


# Location 7L

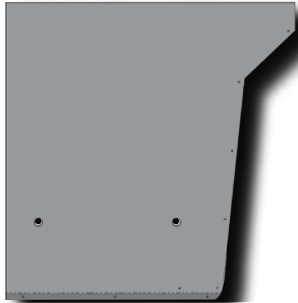
## Rear Wheelhousing Panels



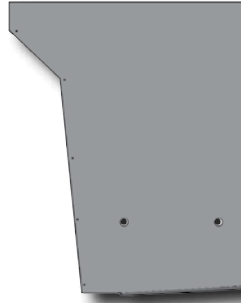
Location



### Panels - Paintable Smooth

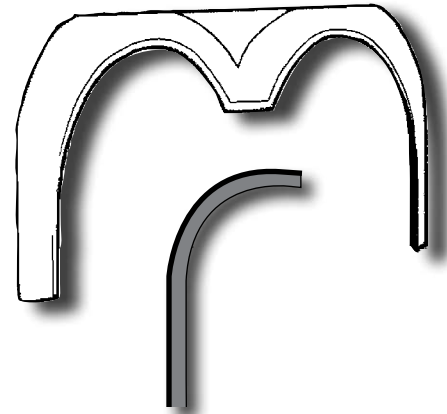


3L-35-598 Panel - Front of LH Rear Whlshg



3L-35-1288 Panel Rear of LH Rear Whlshg

### Rear Fender



03-35-2074 Fender Assy - Rear LH  
03-23-1017FT Seal - Fender

### Panels - Stainless Fluted



3L-35-609 Panel - Front of LH Rear Whlshg



3L-35-607 Panel - Rear of LH Rear Whlshg

### NOTES:

#### 5" Rub Rail Assembly

03-20-1163  
Front of Rear Whlshg



#### 5" Rub Rail Assembly

03-20-1159  
Rear of Rear Whlshg



#### 2" Aluminum Rub Rail Assembly

03-20-1091  
Front of Rear Whlshg



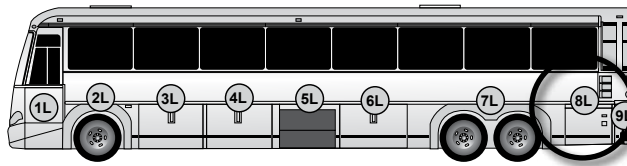
#### 2" Aluminum Rub Rail Assembly

03-20-1096  
Rear of Rear Whlshg

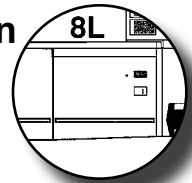


# Location 8L

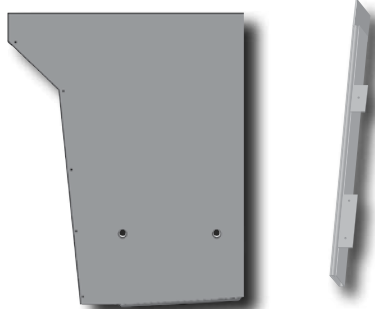
## LH Side Service Doors & Adjacent Body Panels



Location

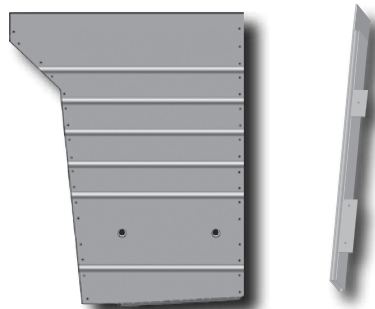


### Adjacent Body Panels Paintable Smooth



3L-35-1288 Panel 3L-20-393 Molding - Finishing

### Stainless Fluted



3L-35-607 Panel 3L-20-393 Molding - Finishing

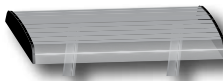
### 5" Rub Rail Assembly

03-20-1159  
Rear of Rear Whlshg



### 2" Aluminum Rub Rail Assembly

03-20-1096  
Rear of Rear Whlshg

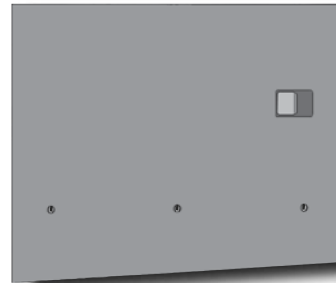


### Above LH Rear Side Service Doors

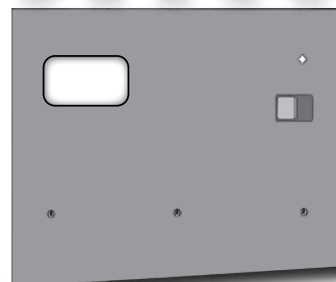
#### Paintable Smooth



3L-35-1219 Panel [45959]



3L-31-1214 Door Assy  
3L-31-1218 Frame Assy  
3L-31-1225 Panel - Interior Lower  
3L-31-1229 Panel - Exterior



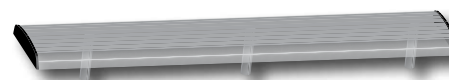
3L-31-1266 Door Assy  
3L-31-1218 Frame Assy  
3L-31-1260 Panel - Exterior

#### 5" Rub Rail Assembly

3L-20-441  
Rear Side Service Door



#### 2" Aluminum Rub Rail Assembly

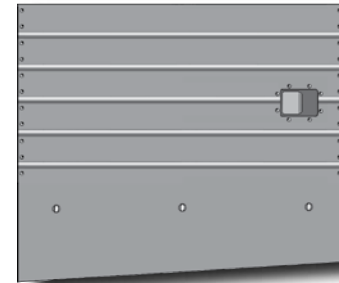


03-20-1100  
Rear Side Service Door

#### Stainless Fluted



3L-35-1220 Panel [45959]



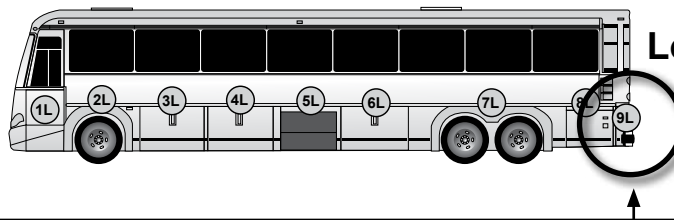
3L-31-1252 Door Assy  
3L-31-1218 Frame Assy  
03-31-2521 Panel - Exterior

## NOTES:

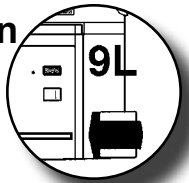


# Location 9L

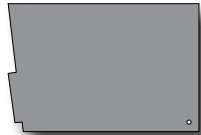
## Rear Corner Tail Light & Satellite Panels



Location



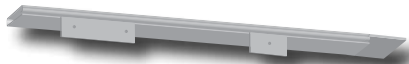
### Filler Panel - LH Paintable Smooth



3L-35-1159

Panel - w/Energy ABS Bumper

### Finishing Molding Rear of LH Side Service Door



3L-20-393

Molding - Finishing

### 5" Rub Rail Assembly

3L-20-281

Front of Condenser Door



NOTES:

### Satellite Door Paintable Smooth



3L-31-2256

Door Assy - RH Satellite

3L-31-2258

Panel - LH Filter Access

### Satellite Door & Panels Stainless Fluted



3L-31-2238

Door Assy - LH

Air Filter Access

3L-31-2243

Panel - LH Air Filter Access



3L-31-1194

Bracket - Door Support Mount

### Satellite Door Components

3L-31-1168

Frame - LH/RH

3L-31-1453

Angle - Support Mount LH

3L-31-1196

Pin Locating Plate Assy

3L-31-2240

Mount - Reflector

19-5-1

Dzus Grommet

19-5-7

Dzus Stud

19-5-9

Dzus Spring

NOTES:

### Fiberglass Tail Light Panels

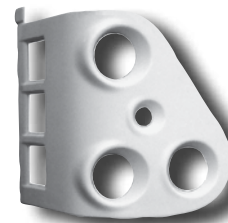
#### EARLY MODEL



3L-35-2277

Panel - Tail Light LH LED

#### LATE MODEL



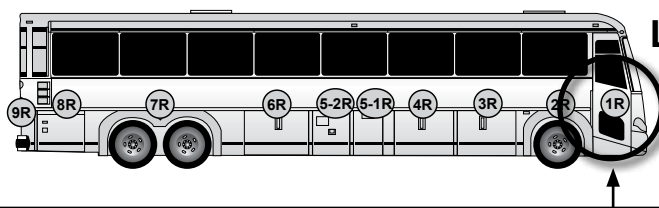
03-35-2834

Panel Assy - Tail Light LH, LED

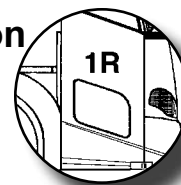
NOTES:

# Location 1R

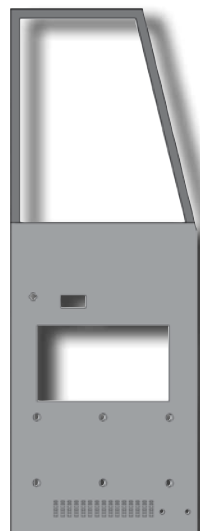
## Entrance Doors & Panels



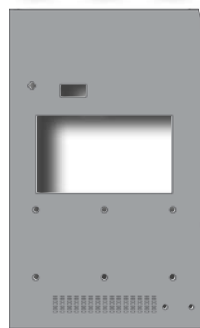
Location



### Early Model Assembly - Paintable Smooth



- 3L-32-180-0001 Door Assy - Less Lock & Upper Sash  
 3L-32-89 Door S/A - Riveted  
 3J-32-329 Frame Assy  
 3J-32-157 Kick Panel S/A - Interior Lower

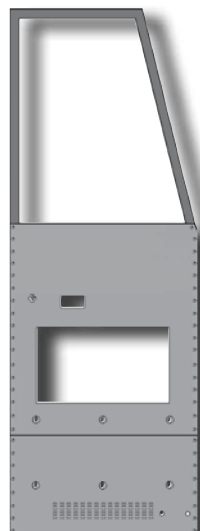


- 3L-32-424 Panel

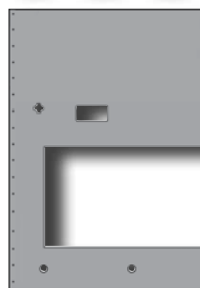
### Components - Early Entrance Door

- 3J-32-94 Lock Body Assy  
 3J-32-157 Kick Panel S/A - Interior Lower  
 3J-32-222-0001 Panel S/A - Interior Door (Grey)  
 3R-32-238 Lock Body S/A

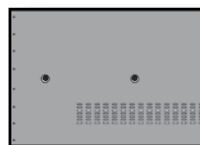
### Early Model Assembly - Stainless Fluted



- 3L-32-422-0001 Door Assy - Sedan Entrance  
 3L-32-423 Door S/A - Frame, Insulation & Exterior Panel  
 3J-32-329 Frame S/A  
 3J-32-157 Kick Panel - Interior

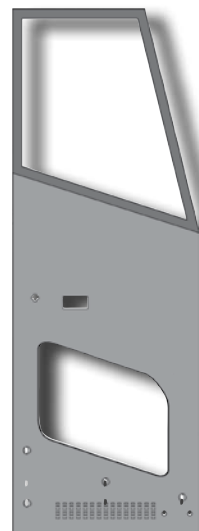


- 3J-32-100 Panel - Split Exterior Upper

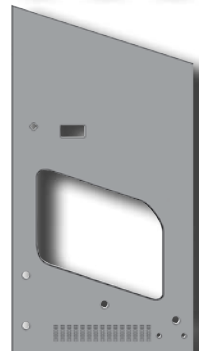


- 3J-32-42 Panel - Split Exterior Lower

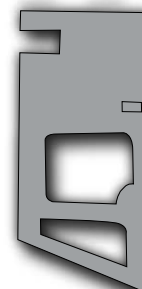
### Late Model Assembly - Paintable Smooth



- 03-32-1701 Door Assy - Less Lock & Upper Sash  
 03-32-1697 Frame S/A  
 03-32-1705 Kick Panel - Interior



- 03-32-1778 Panel - Exterior



- 03-32-1700 Panel Assy

### Fiberglass Rub Rail Assembly

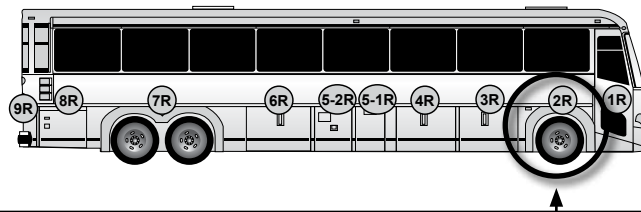


- 03-21-1276 Entrance Door RH

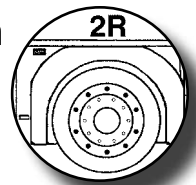
### NOTES:

# Location 2R

## Front Wheelhousing Panels



Location



### Panel - Paintable Smooth

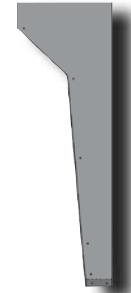
3L-35-4

Panel - Above Front Whlsg



3L-35-593

Panel - Exterior RH



3L-35-140

Panel S/A - w/Switch

3L-35-141

Panel - w/Switch

3J-35-293

Box S/A - Mount

Entrance Door

3L-35-143

Door S/A - Switch Cover

### Panel - Stainless Fluted

3J-35-66

Panel - Above Front Whlsg



3L-35-613

Panel - S/A Front



3J-35-291

Panel S/A

3J-35-292

Panel - W/Cut-Out

3J-35-293

Box S/A - Mount

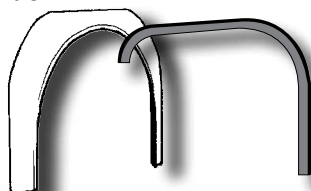
Entrance Door

3J-35-297

Door S/A - Exterior

Entrance

### Front Fender



03-35-1957  
Fender - RH Front

03-23-1017FT  
Seal - Fender

### 5" Rub Rail Assembly

03-20-1141  
Rear of Front  
Whlsg



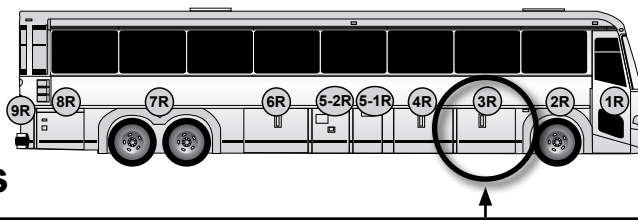
### 2" Aluminum Rub Rail Assembly

03-20-1047  
Rear of Front  
Whlsg

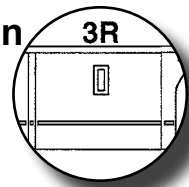


## Location 3R

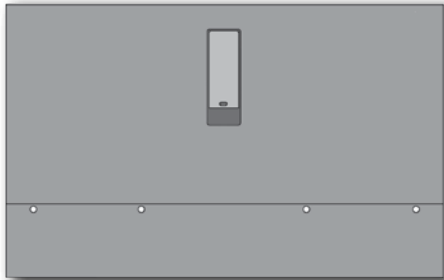
### Baggage Doors & Adjacent Body Panels



Location **3R**



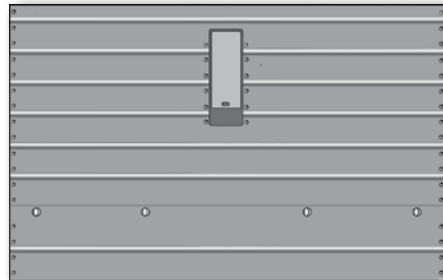
#### Baggage Doors - Paintable Smooth



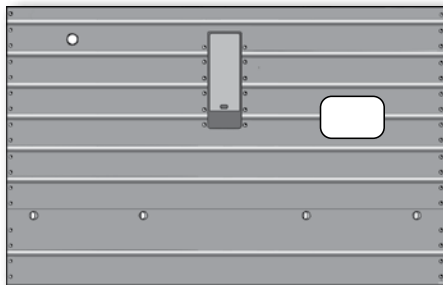
3L-29-761 Door Assy - [50129]  
3L-29-32 Panel - Upper  
3L-29-31 Panel - Lower

#### NOTES:

#### Baggage Doors - Stainless Fluted



3L-29-766 Door Assy  
3L-29-74 Panel - Upper  
3L-29-75 Panel - Lower

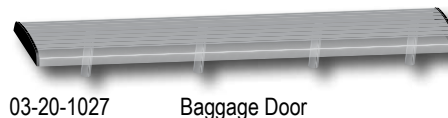


3L-29-1204 Door Assy  
3L-29-1203 Panel - Upper  
3L-29-75 Panel - Lower

#### 5" Rub Rail Assembly



#### 2" Aluminum Rub Rail Assembly



#### Adjacent Body Panels & Rub Rails

##### Paintable Smooth

3L-35-8  
Panel - Between  
Bag Doors

3L-35-593  
Panel - Rear of RH  
Front WhlHsg

##### Stainless Fluted

3L-35-157  
Panel - Between  
Bag Doors

3L-35-613  
Panel - Rear of  
RH Front WhlHsg

#### 5" Rub Rails

3G-20-109  
Between Bag  
Doors

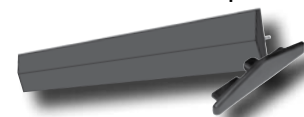
03-20-1141  
Rear of RH  
Front WhlHsg

#### 2" Aluminum Rub Rail Assembly

03-20-1034  
Between Bag  
Doors

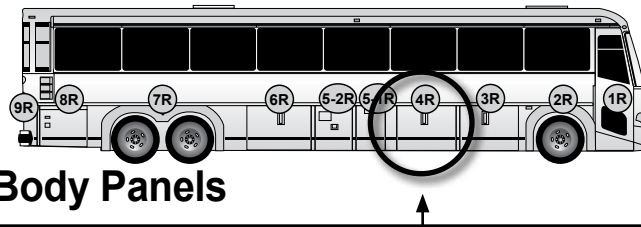
03-20-1047  
Rear of  
Front WhlHsg

See page 28-29 for all Rubrail  
Assemblies & Components.

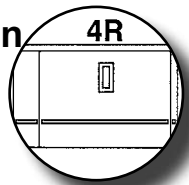


## Location 4R

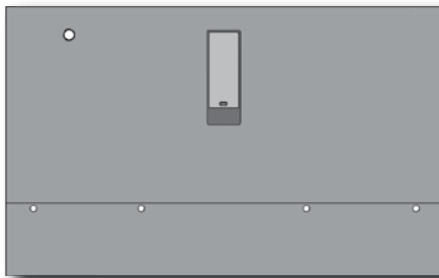
### Baggage Doors & Adjacent Wheelchair Body Panels



## Location 4R

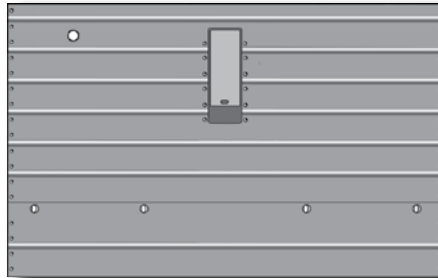


#### Baggage Doors - Paintable Smooth



03-29-1696 Door Assy  
03-29-1698 Panel - Upper  
3L-29-31 Panel - Lower

#### Baggage Doors - Stainless Fluted



3L-29-767 Door Assy  
3L-29-131 Panel - Upper  
3L-29-75 Panel - Lower

#### Adjacent Body Panels & Rub Rails

##### Paintable Smooth

3L-35-590  
Panel - Front of Fuel  
Door

3L-35-8  
Panel - Between  
Bag Doors

##### Stainless Fluted

3L-35-612  
Panel - Front of Fuel  
Door

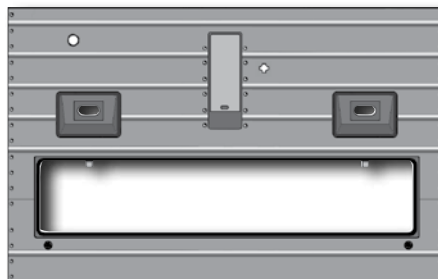
3L-35-157  
Panel - Between  
Bag Doors

#### Wheelchair Doors - Paintable Smooth



03-29-1715 Door Assy - Wheelchair Lift  
03-29-1714 Panel - Upper w/Lights  
3L-29-1130 Panel - Lower  
03-29-2001 Door Assy - w/Braun Wheelchair  
Lift w/Marker Light

#### Wheelchair Doors - Stainless Fluted



3L-29-1214 Door Assy - Wheelchair Lift  
3L-29-1212 Panel - Exterior Upper  
3L-29-1009 Panel - Exterior Lower

#### 5" Rub Rail

3L-20-282  
Front of  
Fuel Door

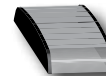


3G-20-109  
Between  
Bag Doors



#### 2" Aluminum Rub Rail Assembly

03-20-1045  
Front of  
Door



03-20-1034  
Between  
Bag Doors



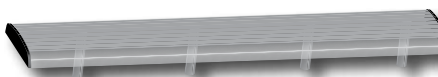
#### NOTES:

#### Bag Door with Wheel Chair Lift Components

3F-29-107 Bracket - Latch, Casting, LH,  
Lower Door Lock  
3F-29-108 Bracket - Latch, Casting, RH,  
Lower Door Lock  
3F-29-186 Bearing - Cap, Swing Tube  
3F-29-187 Bearing - Base, Swing Tube  
3F-29-216 Rod - Locking, Galvanized  
3F-29-219 Bumper - Baggage Door Assy  
3F-29-220 Clamp - Mounting, Lock Rod  
3F-29-221 Stop - Locking Rod, Baggage Door

3F-29-257 Bearing - Base, Lock Rod  
3F-29-258 Bearing - Cap, Lock Rod  
3L-29-21 Seal - Baggage Door  
3L-29-30 Panel - Inner, Baggage Door  
3L-29-61 Pocket Assy - Complete  
3L-29-70 Handle Only - Baggage Door  
3L-29-71 Handle Assy - Baggage Door Complete  
3L-29-1167 Frame  
3M-29-108 Eye Bolt

#### 2" Aluminum Rub Rail Assembly

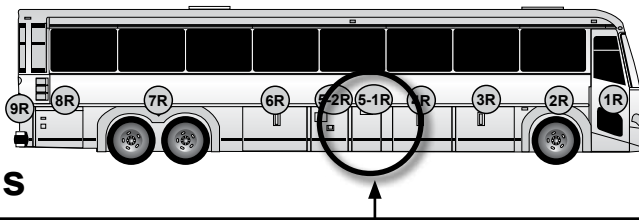


03-20-1027 Baggage Door



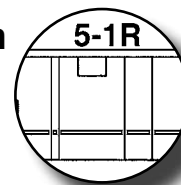
# Location 5-1R

## Fuel Doors & Adjacent Body Panels



Location

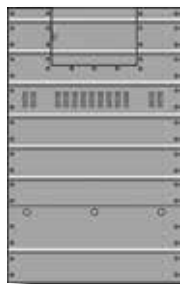
5-1R



**Door Assemblies & Panels**  
Paintable Smooth

3L-31-885  
3L-31-1073  
3L-31-1768

Door Assy  
Door Assy - Fuel Filler w/Hinge  
Frame Assy



**Door Assemblies & Panels**  
Stainless Fluted

3L-31-910  
3L-31-1074  
3L-31-1069

Door Assy - Fuel Compartment  
Door Assy - Fuel Filler w/Hinge  
Frame Assy



3L-31-853 Panel - Upper



3L-31-900 Panel - Upper Fuel Compartment



3L-31-854 Panel - Lower



3L-31-899 Panel - Lower Fuel Door

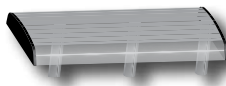
### 5" Rubber Rub Rail Assembly & Components



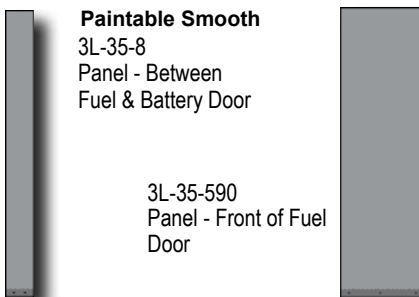
3L-31-168 Rail Assy  
3L-31-173 Rubber Rub Rail - Fuel Door  
3L-31-170 Channel - Mount, Fuel Door  
3G-20-10 End Cap - Rubber Rub Rail  
3G-29-18 End Plug Mounting Plate  
3R-20-14 Washer - Nylon  
3J-33-50 Bolt - Mount Extrusions to Door

### 2" Aluminum Rub Rail Assembly

03-20-1070  
Fuel Door

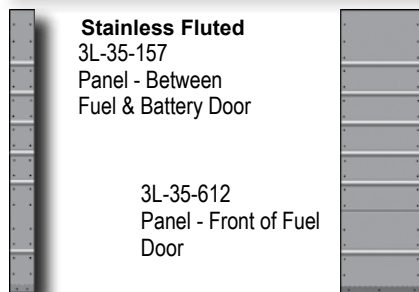


### Adjacent Panels & Rub Rails



**Paintable Smooth**  
3L-35-8  
Panel - Between  
Fuel & Battery Door

3L-35-590  
Panel - Front of Fuel  
Door



**Stainless Fluted**  
3L-35-157  
Panel - Between  
Fuel & Battery Door

3L-35-612  
Panel - Front of Fuel  
Door

### 5" Rub Rails

3G-20-109 Between Fuel & Battery Door



3L-20-282 Front of Fuel Door



### 2" Aluminum Rub Rail Assembly

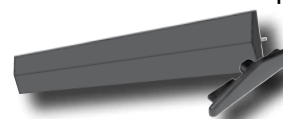
03-20-1034  
Between Fuel & Battery Door



03-20-1045  
Front of Fuel Door



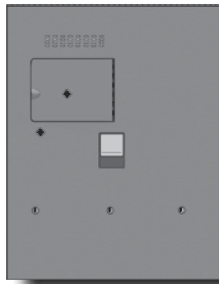
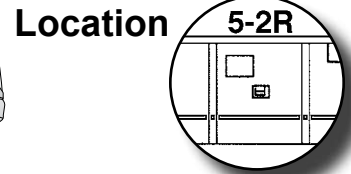
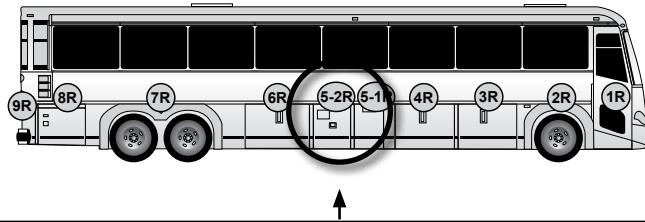
See page 28-29 for all Rubrail Assemblies & Components.



## NOTES:

# Location 5-2R

## Battery Doors & Components

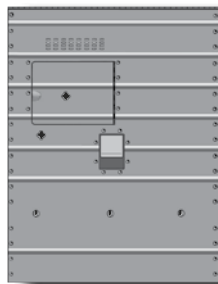


**Assembly with  
C/H Filter &  
Access  
Door**  
Paintable Smooth

- 3L-30-376 Door Assy - w/Lock/Lock & Hinged Panel
- 3L-30-552 Door Assy - w/Locked Access Door, Hinged & Sliding
- 3L-30-238 Frame Assy
- 3L-30-396 Panel - Battery Door w/Large Access & Lock
- 3L-30-402 Door Assy - Battery, Hinged
- 3L-30-424R58 Panel - Upper Inner
- 3L-30-423R58 Panel - Lower Inner

### 2" Aluminum Rub Rail Assembly

03-20-1071  
Battery Door



**Assembly  
with  
C/H Filter &  
Large  
Access  
Door**  
Stainless Fluted

- 3L-30-393 Door Assy - w/Lock/Lock & Hinged Panel
- 3L-30-549 Door Assy - w/Lock & Locked Access Door, Hinged & Sliding
- 3L-30-238 Frame Assy - Battery Door
- 3L-30-399 Panel - Battery Door w/Large Access Key Lock
- 3L-30-404 Door Assy - Switch Access w/Key Lock

### 5" Rubber Rub Rail Assembly & Components



- 3G-30-1 Rub Rail Assy
- 3G-30-2 Rubber
- 3G-30-3 Mounting Channel
- 3G-20-10 End Cap - Rubber Rub Rail
- 3G-29-18 End Cap Mounting Plate
- 3R-20-14 Washer - Nylon
- 3J-33-50 Bolt - Mount Extrusion To Doors

### Adjacent Body Panels

#### Paintable Smooth

3L-35-8  
Panel - Between  
Battery & Fuel Door &  
Rear of Battery Door

#### Stainless Fluted

3L-35-157  
Panel - Between  
Battery & Fuel Door &  
Rear of Battery Door

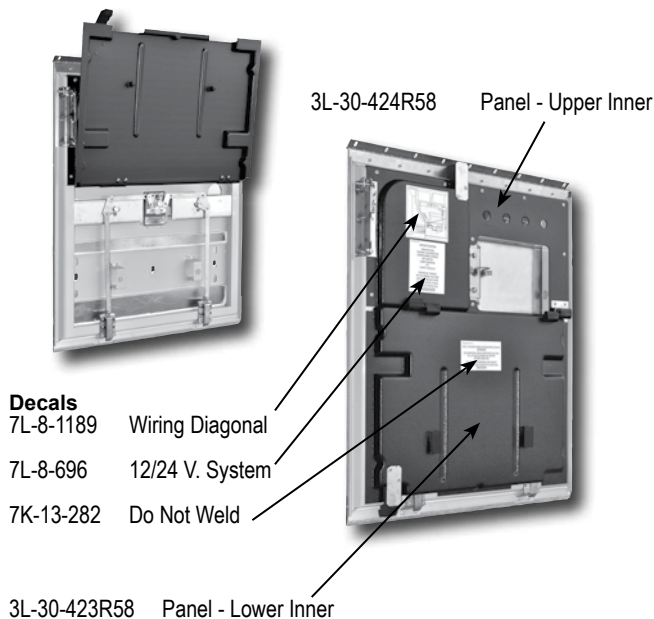
### 5" Rubber Rub Rail

3G-20-109  
Between Bag Doors, Between Fuel &  
Battery Door, Rear of Battery Door

### 2" Aluminum Rub Rail Assembly

03-20-1034  
Between Bag Doors, Between Fuel &  
Battery Door, Rear of Battery Door

## Interior Panels & Components



3L-30-84  
Latch Assy - Interior  
Access Cover

3L-30-83  
Hinge Assy - RH Interior  
Access Cover

3J-30-32  
Seal - Upper Divider

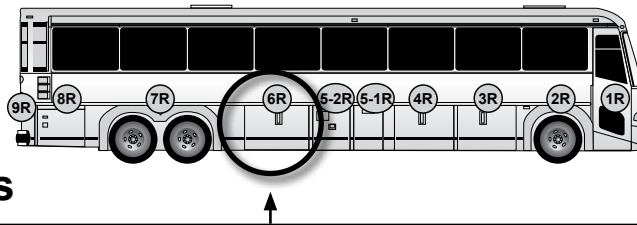
3R-30-39  
Channel S/A - Prop  
Mounting Welded

3J-30-30  
Plate - Battery Seal  
Upper/Bottom

3J-30-33  
Seal - Rubber Battery  
Door Bottom

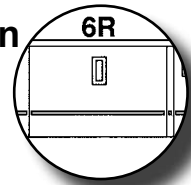
# Location 6R

## Baggage Doors & Adjacent Body Panels

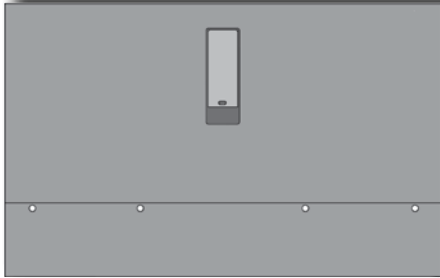


Location

6R

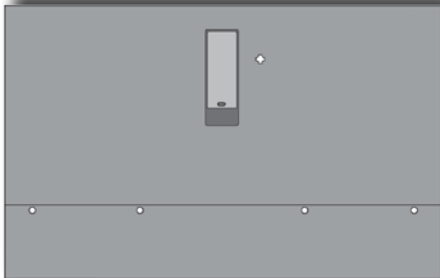


### Baggage Doors - Paintable Smooth



- 3L-29-761 Door Assy
- 3L-29-32 Panel - Exterior Upper
- 3L-29-31 Panel - Exterior Lower

### Baggage Doors - Paintable Smooth

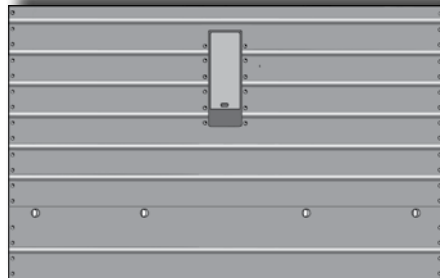


- 3L-29-69 Door Assy - Bay #1 or #3 w/Key Lock
- 3L-29-68 Panel - Upper w/Lock
- 3L-29-31 Panel - Exterior Lower

### Bag Door Components

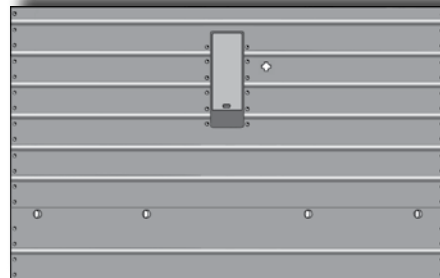
- 3F-29-107 Bracket - Latch Casting, LH
- 3F-29-108 Bracket - Latch Casting, RH
- 3F-29-216 Rod - Locking Galvanized
- 3F-29-220 Clamp - Mounting, Lock Rod
- 3F-29-221 Stop - Locking Rod
- 3F-29-257 Bearing - Base, Lock Rod
- 3F-29-258 Bearing - Cap, Lock Rod
- 3L-20-718 Bumper
- 3L-29-61 Pocket Assy - Complete
- 3L-29-70 Handle Only - Baggage Door
- 3L-29-71 Handle Assy - Locking Style
- 3L-29-1167 Frame S/A - Welded
- 3L-29-1110 Housing - Wheel Chair Lift
- 3M-29-108 Curb Light
- Eye Bolt

### Baggage Doors - Stainless Fluted



- 3L-29-766 Door Assy
- 3L-29-74 Panel - Upper
- 3L-29-75 Panel - Lower

### Baggage Doors - Stainless Fluted



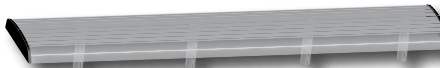
- 3L-29-81 Door Assy - Bay #1 or #3 w/Key Lock
- 3L-29-82 Panel - Upper w/Lock
- 3L-29-75 Panel - Lower

### 5" Rubber Rub Rail Components



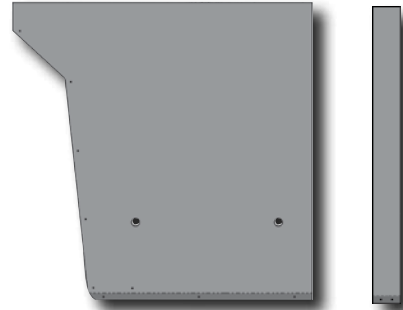
- 3L-29-56 Rub Rail Assy
- 3L-29-59 Rubber
- 3L-29-58 Mounting Channel
- 3G-20-10 End Cap - Rubber Rub Rail
- 3G-29-18 End Cap - Mounting Plate
- 3R-20-14 Washer - Nylon
- 3J-33-50 Bolt - Mount Extrusion To Doors
- 3L-20-332 Rub Rail Assy - Rear of Front Whlshg
- 3L-20-309 Rub Rail - Rear of Bag Door

### 2" Aluminum Rub Rail Assembly



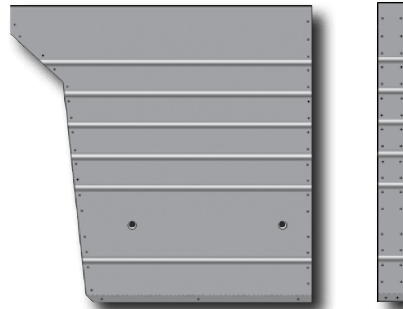
- 03-20-1027 Baggage Door

### Adjacent Body Panels & Rub Rails Paintable Smooth



- 3L-35-592 Panel - Front of RH Rear W/H
- 3L-35-8 Panel - Rear of Battery Door

### Stainless Fluted



- 3L-35-608 Panel - Front of RH Rear Whlshg
- 3L-35-157 Panel - Rear of Battery Door

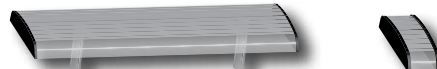
### 5" Rub Rails



- 3G-20-109 Between Bag Doors

- 3L-20-283 Front of RH Rear Whlshg

### 2" Aluminum Rub Rail Assembly

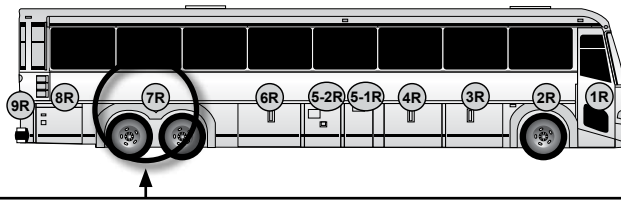


- 03-20-1091 Front of RH Rear Whlshg

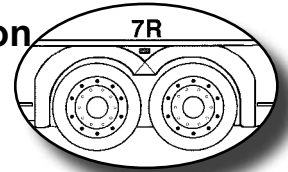
- 03-20-1034 Between Bag Doors

# Location 7R

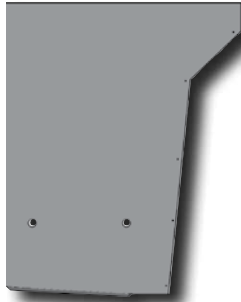
## Rear Wheelhousing Panels



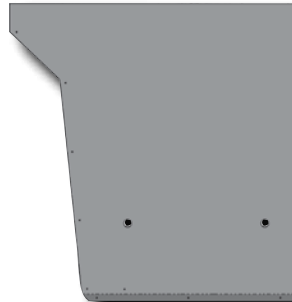
Location



### Panels - Paintable Smooth



3L-35-1287M Panel - Rear of RH Rear Whlhsg

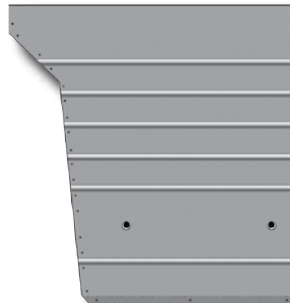


3L-35-592M Panel - Front of RH Rear Whlhsg

### Panels - Stainless Fluted



3L-35-606 Panel - Rear of RH Rear Whlhsg



3L-35-608 Panel - Front of RH Rear Whlhsg

### 5" Rub Rail Assembly

03-20-1159  
Rear or Rear  
Whlhsg



### 5" Rub Rail Assembly

03-20-1163  
Front of Rear  
Whlhsg



### 2" Aluminum Rub Rail Assembly

03-20-1096  
Rear of Rear  
Whlhsg

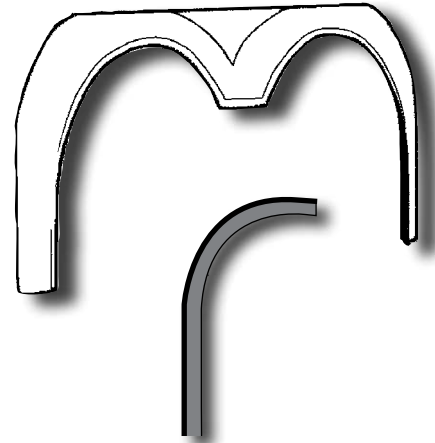


### 2" Aluminum Rub Rail Assembly

03-20-1091  
Front of Rear  
Whlhsg



### Rear Fender

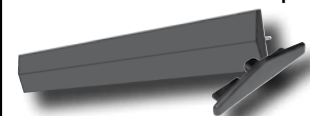


03-35-1919  
03-23-1017FT

Fender Assy - Rear RH  
Seal - Fender

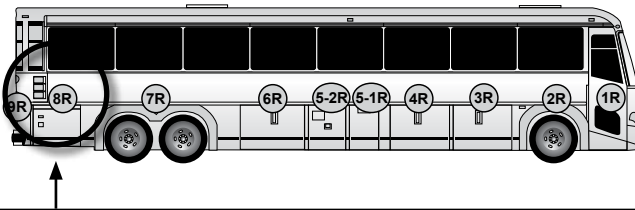
### NOTES:

See page 28-29 for all Rubrail  
Assemblies & Components.

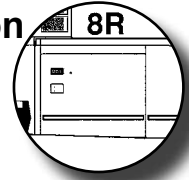


# Location 8R

## RH Side Service Door & Adjacent Body Panels



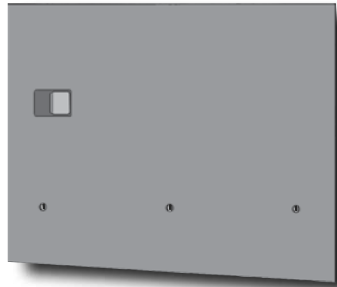
## Location 8R



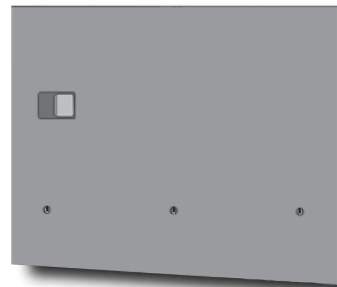
### Panels & Doors - Paintable Smooth



3L-35-1219 Panel - Above Rear Side Service Door



3L-31-1213 Door Assy  
3L-31-1217 Frame Assy - w/Inner Panel  
3L-31-1228 Panel

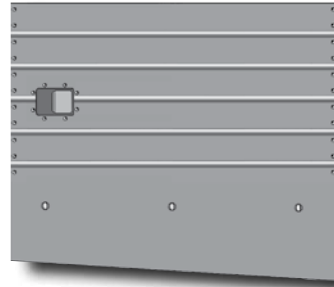


3L-31-1265 Door Assy  
3L-31-1217 Frame Assy - w/Inner Panel  
3L-31-1259 Panel

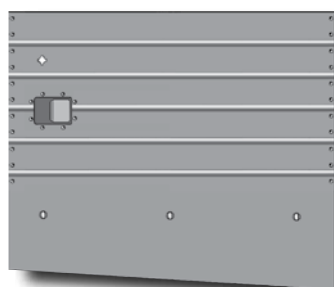
### Panels & Doors - Stainless Fluted



3L-35-1220 Panel - Above Rear Side Service Door



3L-31-1251 Door Assy  
3L-31-1217 Frame Assy - w/Inner Panel  
03-31-2520 Panel - Exterior



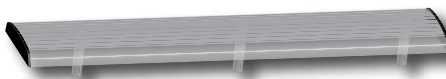
3L-31-2327 Door Assy  
3L-31-1217 Frame Assy - w/Inner Panel  
3L-31-2328 Panel

### 5" Rub Rail Assembly

3L-20-441  
Rear Side Service Door



### 2" Aluminum Rub Rail Assembly

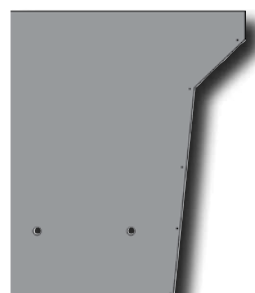


03-20-1100  
Rear Side Service Door

### Adjacent Body Panels Paintable Smooth



3L-20-394  
Molding - Finishing



3L-35-1287M  
Panel

### Stainless Fluted



3L-20-394  
Molding - Finishing



3L-35-606  
Panel

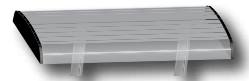
### 5" Rub Rail Assembly

3L-20-284  
Rear of Rear WhlHsg

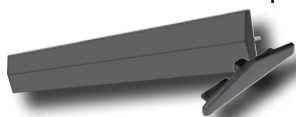


### 2" Aluminum Rub Rail Assembly

03-20-1096  
Rear of Rear  
WhlHsg



See page 28-29 for all Rubrail Assemblies & Components.

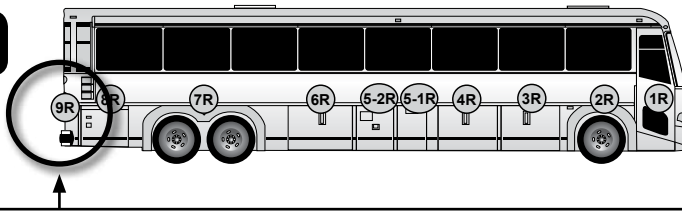


## NOTES:

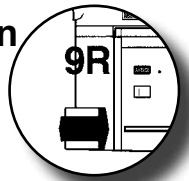


## Location 9R

### Right Rear Corner Panels & Rub Rail



Location

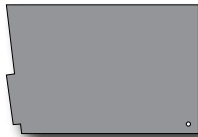


#### Panel - Rear of RH Rear Side Service Door Paintable Smooth



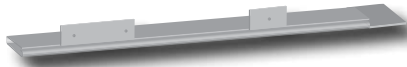
3L-35-644 Panel

#### Filler Panel Paintable Smooth



3L-35-1167 Panel - w/Energy ABS Bumper

#### Finishing Molding Rear of LH Side Service Door



3L-20-394 Molding - Finishing

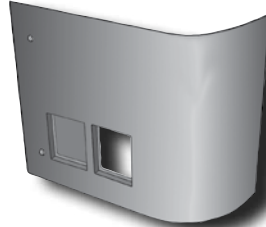
#### 5" Rub Rail Assemblies



3G-20-11 Rear of Rear Side Service Door  
3G-20-141 w/Energy Bumper  
3L-20-281 Front of Condenser Door

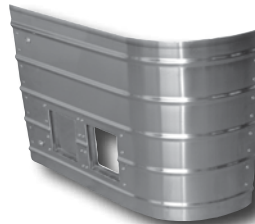
**NOTES:**

#### RH Satellite Door Paintable Smooth



3L-31-2257 Door Assy - Access RH  
3L-31-2259 Panel - Access Door

#### Satellite Door & Panels Stainless Fluted



3L-31-2239 Door Assy -  
Satellite RH w/Cut-Outs  
3L-31-2246 Panel - Satellite Door RH



3L-31-1250 Bracket - Door Support RH

#### Satellite Door Components

3L-31-1168 Frame  
3L-31-1454 Angle  
3L-31-1196 Pin Locating Plate Assy  
3L-31-2240 Frame - Light  
19-5-1 Dzus Fasteners - Grommet  
19-5-7 Dzus Fasteners - Stud  
19-5-9 Dzus Spring

**NOTES:**

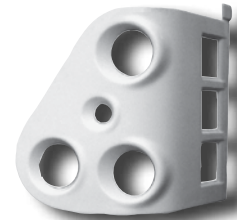
#### Fiberglass Tail Light Panels

##### EARLY MODEL



3L-35-2448 Panel - Tail Light RH LED

##### LATE MODEL

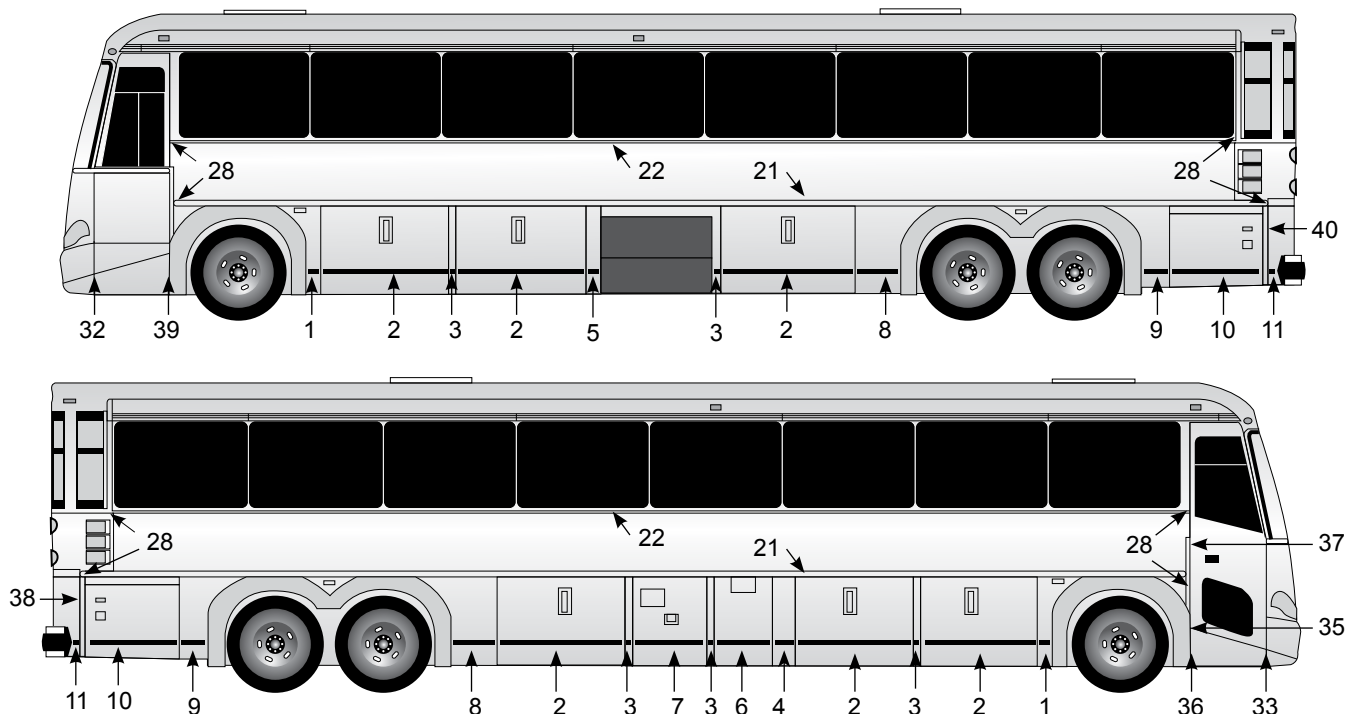


03-35-2433 Panel Assy - Tail Light RH LED

**NOTES:**

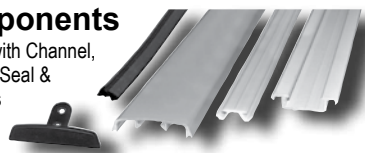
# MCI D4505

## Rub Rails & Components



### Aluminum Rub Rail & Components

Rub rail with Channel, Retainer, Seal & End Caps



Key Part #	Description
1 03-20-1047	Assy - Rear of Front W/H
1 03-20-1048	Channel - Rear of Front W/H
1 03-20-1053	Cap Only - Rear of Front W/H
2 03-20-1027	Assy - Baggage Door
2 03-20-1028	Channel - Baggage Door
2 03-20-1029	Cap Only - Baggage Door
3 03-20-1034	Assy - Between Bag, Battery, Fuel & Condenser Doors
3 03-20-1035	Channel - Btwn Bag, Battery, Fuel & Condenser Doors
3 03-20-1036	Cap only - Btwn Bag, Battery, Fuel & Condenser Doors
4 03-20-1040	Assy - Wheelchair Lift Door
4 03-20-1041	Channel - Front of Fuel Door
4 03-20-1042	Cap Only - Front of Fuel Door

Key Part #	Description
5 03-20-1137	Assy - Front of Condenser Door
5 03-20-1034	Channel - Front of Cndnsr Dr.
5 03-20-1036	Cap Only - Front of Cndnsr Dr.
6 03-20-1070	Assembly - Fuel Door
6 03-20-1067	Channel - Fuel Door
6 03-20-1068	Cap only - Fuel Door
7 03-20-1071	Assembly - Battery Door
7 03-20-1062	Channel - Battery Door
7 03-20-1063	Cap only - Battery Door
8 03-20-1091	Assembly - Front of Rear W/H
8 03-20-1092	Channel - Front of Rear W/H
8 03-20-1093	Cap Only - Front of Rear W/H
9 03-20-1096	Assy - Rear of Rear W/H
9 03-20-1097	Channel - Rear of Rear W/H
9 03-20-1098	Cap Only - Rear of Rear W/H
10 03-20-1100	Assy - Rr Side Service Dr
10 03-20-1101	Channel - Rr Side Service Dr.
10 03-20-1102	Cap Only - Rr Side Service Dr.
11 03-20-1137	Assy - w/Energy Bumper Rear Side Service Dr.
11 03-20-1134	Channel - w/Energy Bumper Rear of Side Service Dr.
11 03-20-1136	Cap only - w/Energy Bumper Rear of Side Service Dr.

Key Part #	Description
n/i 03-20-1980	Screw - End Cap Plate (6-32x <sup>3</sup> / <sub>8</sub> )
n/i 3L-20-392	Seal - Top of Rub Rail
n/i 3J-33-50	Bolt - Sq. Head to Mnt. Channel
n/i 3R-20-14	Washer - to Mount Channel
n/i 19-2-179	Flat Washer - Composition
n/i 19-13-24	Rivet - <sup>3</sup> / <sub>8</sub> " to Mount Channel

n/i = not illustrated

### Aluminum Rub Rail End Cap Components

A. 03-20-1044	B. 03-20-1039
C. 03-20-1023	D. 03-20-1038 E. 03-20-1072
Key Part #	Description
03-20-1044	Bracket - End Cap Plate
03-20-1039	End Cap - Plate
03-20-1023	End Cap - Door Rub Rails
03-20-1038	End Cap - Between Bag Drs.
03-20-1072	End Cap - w/Wheel Chair Lift

## Rub Rails, Sash & Components

### 5" Rubber Rub Rail & Components



Key	Part #	Description
1	03-20-1141	Assembly - Rear of Front W/H
1	3L-20-296	Channel - Rear of Front W/H
1	03-20-1138	Rubber Only - Rear of Front W/H
1	3L-20-332	Assy - Cap, Rear of Front W/H
2	3L-29-56	Assy - Baggage Door
2	3L-29-58	Channel - Baggage Door
2	3L-29-59	Rubber Only - Baggage Door
3	3G-20-108	Cap - Rear of Condenser Dr.
3	3G-20-109	Cap - Between Baggage, Battery & Fuel Doors
3	3L-31-168	Assy - Fuel Comp Dr.
4	3L-20-282	Cap Assy - Front of Fuel Door
4	3L-20-295	Channel - Front of Fuel Door
4	3L-20-290	Rubber Only - Front of Fuel Door
5	3L-20-281	Assembly - Front of Condenser Dr.
5	3L-20-296	Channel - Front of Condenser Dr.
5	3L-20-291	Rubber Only - Front of Cndnsr. Dr.
6	3L-31-168	Assembly - Fuel Door
6	3L-31-170	Channel - Fuel Door
6	3L-31-173	Rubber Only - Fuel Door

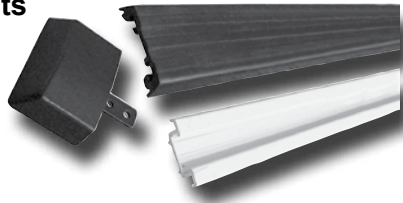
Key	Part #	Description
7	3G-30-1	Assy - Battery Door
7	3G-30-3	Channel - Battery Door
7	3G-30-2	Rubber Only - Battery Door
8	3L-20-283	Assy - Front of Rear W/H
8	03-20-1163	Assy - Front of Rear W/H
8	03-20-1155	Channel - Front of Rear W/H
8	03-20-1157	Rubber Only - Front of Rear W/H
9	03-20-1159	Assy - Rear of Rear W/H
9	03-20-1154	Channel - Rear of Rear W/H
9	03-20-1156	Rubber Only - Rear of Rear W/H
10	3L-20-441	Assembly - Rear Side Service Dr.
10	3L-20-443	Channel - Rear Side Service Dr.
10	3L-20-442	Rubber Only - Rr Side Service Dr.
n/i	03-20-1145	Assy - w/Energy Bumper Rear of Side Service Dr.
n/i	03-20-1143	Channel - w/Energy Bumper Rear of Side Service Dr.
n/i	03-20-1142	Rubber Only - w/Energy Bumper Rear Side Service Dr.

#### Components

n/i	3G-20-10	End Plug - Rubber
n/i	3G-29-18	Mounting Plate - End Cap
n/i	19-13-173	Rivet - End Cap Plates
n/i	3J-33-50	Bolt - Rub Rail Mounting
n/i	3R-20-14	Washer - to Mount Channel
n/i	19-1-654	Screw - Pan Head, No. 8-32x3/4
n/i	3G-20-94	Plug - Cover Screw Holes in Rub Rail Sections
n/i	19-3-310	Lock Nut - 3/8 - 16
n/i	19-2-179	Washer - Composition

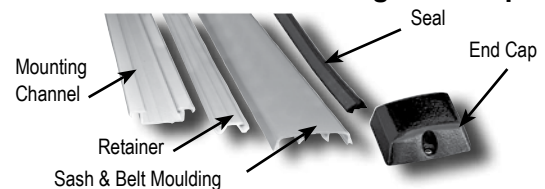
### NOTES:

### Rubber Belt & Sash Moldings & Components



Key	Part #	Description
21	3L-20-462	Molding - Rubber Belt Rail, Side Wall, LH/RH (480")
22	3L-20-97	Molding - Rubber Sash Rail, Side Wall, LH/RH (466")
21/22	3L-20-45	Channel - Belt/Sash, Side Wall, LH/RH
21	3L-20-461	Channel - Belt Rail Rear Area, LH/RH
22	3L-20-262	Channel - Sash Rail Rear Area, LH/RH
21/22	19-13-262	Rivet - Mounting Channel, Sash & Belt (monobolt)
28	3L-20-112M	End Cap - Sash & Belt Molding
28	19-13-22	Rivet - End Cap Mount
31	3L-20-18	Fascia Molding Below Windshield - Fiberglass
32	3L-35-152	Trim Angle - Finishing Front LH Lower Corner at Front Bumper (Vertical)
33	3L-35-153	Trim Angle - Finishing Front RH Lower Corner at Front Bumper (Vertical)
35	3L-35-162	Trim Angle - Rear Of J-Box And Rear Of Entrance Door
36	3L-35-120	Trim Edge - Finishing Rear Of Entrance Door
37	3L-35-163	Trim Angle - Finishing Rear of Entrance Door Vertical Upper
38	3L-20-394	Molding - Finishing Rear of RH Rear Side Service Door
39	3L-35-336	Angle - Exterior Trim, Rear of Junction Box
40	3L-20-393	Molding - Finishing Rear of LH Rear Side Service Door

### Aluminum Belt & Sash Moldings & Components



Key	Part #	Description
21/22	3L-20-431	Molding - Aluminum Sash & Belt Rail Side Wall LH/RH
21/22	3L-20-45	Channel - Sash & Belt Rail Side Wall LH/RH
21/22	3L-20-435	Retainer - Sash & Belt Rail Side Wall LH/RH
21/22	3L-20-436	Retainer - Sash & Belt Rail Side Wall, Front or Rear
21/22	3L-20-461	Channel - Belt Rail, Rear LH/RH
21/22	3L-20-262	Channel - Sash Rail, Rear LH/RH
21/22	3L-20-392	Seal - Top of Sash & Belt Rails
28	3L-20-430M	End Cap - Aluminum Sash & Belt Molding
n/i	19-1-662	Screw - Mount End Cap (10x24-1)
31	3L-20-18	Fascia Molding Below Windshield - Fiberglass
32	3L-35-152	Trim Angle - LH Lower Corner at Front Bumper
33	3L-35-153	Trim Angle - RH Lower Corner at Front Bumper
35	3L-35-162	Trim Angle - Rear Of J-Box And Rear Of Entrance Door
36	3L-35-120	Trim Edge - Finishing Rear Of Entrance Door
37	3L-35-163	Trim Angle - Finishing Rear of Entrance Door
38	3L-20-394	Molding - Finishing Rear of RH Rear Side Service Door
39	3L-35-336	Angle - Exterior Trim, Rear of Junction Box
40	3L-20-393	Molding - Finishing Rear of LH Rear Side Service Door

n/i = not illustrated

# PARTS LIST

Part #	Description	Part #	Description	Part #	Description
03-20-1023	End Cap	03-23-1017	Seal - Fender (100 Foot Roll)	07-07-6070CKP	Headlamp Conversion Kit - 7" Flat Glass (Paintable)
03-20-1027	Rub Rail Assy - Baggage Door	03-29-1078	Panel - Upper, Baggage Door	07-07-6070SLPL	Bezel - Headlamp LH use w/Sirius Lamp (Paintable)
03-20-1028	Channel - Mount, Rub Rail Baggage Door	03-29-1149	Panel - Baggage Door 47.625"	07-07-6070SLPR	Bezel - Headlamp RH use w/Sirius Lamp (Paintable)
03-20-1029	Cap - Rub Rail, Baggage Door	03-29-1696	Door Assy - Baggage w/Side Marker, Curb Side (Painted)	07-07-6070TLPL	Bezel - Headlamp LH use w/Truck-Lite Lamp (Paintable)
03-20-1034	Rub Rail Assy - Between Baggage Doors	03-29-1697	Door Assy - Baggage w/Side Marker, Road Side (Painted)	07-07-6070TLPR	Bezel - Headlamp RH use w/Truck-Lite Lamp (Paintable)
03-20-1035	Channel - Mount, Rub Rail	03-29-1698	Panel - Baggage Door w/Side Marker	19-01-1730	Capscrew - 3/8-16 UNC x 1-1/4 Hex Head, Stainless Steel
03-20-1036	Cap - Rub Rail	03-29-1699	Panel - Baggage Door w/Side Marker	19-02-0343	Washer - Fender, 3/8 Nom, Stainless Steel
03-20-1038	Cap - End, Molding	03-29-1714	Panel - Upper, Baggage Door WCL w/Lights	19-5-1	Dzus - Grommet
03-20-1039	End Cap	03-29-1715	Door Assy - Wheelchair Lift w/Smooth Panel	19-5-7	Dzus - Stud
03-20-1040	Rub Rail Assy - Wheelchair Door	03-29-1895	Panel Assy - Baggage Door Long	19-5-9	Dzus - Spring
03-20-1041	Channel - Mount, Rub Rail	03-29-1896	Panel Assy - Baggage Door Short	19-7-48	Yoke - Handle Attaching
03-20-1042	Cap - Rub Rail	03-29-2001	Door Assy - Baggage w/Wheelchair Lift w/Marker Light (Painted)	24-51-0049	Seal - 1/2 x 5/8D EPDM (100 FT Roll)
03-20-1043	Rub Rail Assy - Small Baggage Door	03-31-2076	Panel Assy - Service Door RH, Bosch / Fiberglass	3C-29-178	Hinge Bracket
03-20-1044	Bracket	03-31-2428	Panel - Ext.	3F-29-107	Bracket - Latch, Casting, LH, Lower Door Lock
03-20-1045	Rub Rail Assy - Front of Fuel Door	03-31-2432M	Rub Rail Assy - Entrance Door RH / Fiberglass	3F-29-108	Bracket - Latch, Casting, RH, Lower Door Lock
03-20-1047	Rub Rail Assy - Rear of Front Wheel	03-31-2433	Frame Assy - Front Side Service Door	3F-29-109	Casting - Lower Lock, LH
03-20-1048	Channel - Mount, Rub Rail	03-31-2439	Hinge Assy	3F-29-110	Casting - Lower Lock, RH
03-20-1053	Cap - Rub Rail	03-31-2450	Plate Assy	3F-29-168	Panel - Upper, Baggage Door
03-20-1057	Rub Rail Assy - Service Door, Engine	03-31-2520	Panel - Ext. Door RH	3F-29-169	Panel - Lower, Baggage Door
03-20-1062	Channel - Mount, Rub Rail, Battery Door	03-31-2521	Panel - Rear Side Service Door	3F-29-186	Bearing - Cap, Swing Tube
03-20-1063	Cap - Rub Rail, Battery Door	03-31-2863	Door Assy - Engine w/LED LP Light LH (Stainless)	3F-29-187	Bearing - Base, Swing Tube
03-20-1067	Channel - Mount, Rub Rail, Fuel Door	03-31-2989	Door Assy - Front Side Service (Aluminum)	3F-29-216	Rod - Locking, Galvanized
03-20-1068	Cap - Rub Rail, Fuel Door	03-31-3041	Door S/A - Front Side Service Door	3F-29-219	Bumper - Baggage Door Assy
03-20-1070	Rub Rail Assy - Fuel Door	03-31-3043	Door Assy - Front Side Service	3F-29-220	Clamp - Mounting, Locking Rod
03-20-1071	Rub Rail Assy - Battery Door	03-31-3164	Door Assy - Engine w/LED LP Light LH (Painted)	3F-29-221	Stop - Locking Rod, Baggage Door
03-20-1072	End Cap	03-32-1697	Frame S/A - Entrance Door	3F-29-257	Bearing - Base, Lock Rod
03-20-1088	Fascia Below Windshield / Fiberglass	03-32-1699	Panel - Interior Sedan Door, Painted	3F-29-258	Bearing - Cap, Lock Rod
03-20-1091	Rub Rail Assy - Front of Rear Whlsg	03-32-1701	Door Assy - Entrance	3F-29-304	Panel - Baggage Door
03-20-1092	Channel - Mount, Rub Rail	03-32-1705	Kick Panel - Side Entrance Door	3F-35-205	Panel - Upper, Between Baggage Door
03-20-1093	Cap - Rub Rail	03-33-1628	Plate Assy - Head Light Mounting, LH	3F-35-354	Panel - Lower, Between Baggage Door
03-20-1096	Rub Rail Assy - Rear of Rear Whlsg	03-33-1629	Plate Assy - Head Light Mounting, RH	3F-35-395	Panel - Upper, Front of RH Rear
03-20-1097	Channel - Mount, Rub Rail	03-33-1630	Plate - Headlight Closeout	3F-35-396	Panel - Lower, Front of RH Rear
03-20-1098	Cap - Rub Rail	03-33-1631	Plate - Headlight Closeout	3G-20-10	End Cap - 5" Rubber Rub Rail
03-20-1100	Rub Rail Assy - Rear Side Service Door, Engine	03-33-1632	Plate - Floating Assy LH	3G-20-11	Rub Rail Assy - 5" Rubber, Rear of Rear Side Service Door
03-20-1101	Channel - Mount, Rub Rail, Rear Side Service Door	03-33-1649	Plate - Floating Assy RH	3G-20-12	Rubber - 5" Rub Rail, Rear of Rear Side Service Door
03-20-1102	Cap - Rub Rail, Rear Side Service Door	03-33-1684	Bracket Assy - Headlight RH	3G-20-13	Mounting Channel - 5" Rub Rail, Rear of Rear Side Service Door
03-20-1105	Rub Rail Assy - Wheelchair Cassette Door	03-33-1685	Bracket Assy - Headlight LH	3G-20-17	Rub Rail Assy - 5" Rear of Condensor Door
03-20-1134	Channel - Mount, Rub Rail	03-33-1686	Spring - Headlight, Diagonal	3G-20-108	Rub Rail - 5" Rubber, Rear of Fuel Door
03-20-1136	Cap - Rub Rail	03-33-1687	Spring - Headlight, Large	3G-20-109	Rub Rail - 5" Rubber, Rear of Battery Door
03-20-1137	Rub Rail Assy - Rear of Rear Service Door	03-33-1689	Foam - Closeout, Headlight	3G-20-141	Rub Rail Assy - 5" Rubber, Rear of Rear Side Service Door w/Energy Abs Bumper
03-20-1138	Cap - 5" Rubber	03-33-1691	Closeout Assy - Front Cap	3G-20-142	Rubber - 5" Rub Rail, Rear of Rear Side Service Door w/Energy Abs Bumper
03-20-1141	Rub Rail Assy - 5" Rubber	03-33-1692	Closeout - Foam Insulation	3G-20-143	Mounting Channel S/A - 5" Rub Rail, Rear of Rear Side Service Door w/Energy Abs Bumper
03-20-1142	Cap - 5" Rubber	03-33-1693	Cover - Lower, Headlight LH	3G-20-347	Mounting Channel - Entrance Door
03-20-1143	Channel - 5" Rub Rail	03-33-1696	Cover Assy - Headlight RH	3G-20-350	Mounting Channel - Front Service Door
03-20-1145	Rub Rail Assy - 5" Rubber	03-33-1743	Clamp Assy	3G-21-1	Bumperette Assy - Rubber
03-20-1154	Channel - Rub Rail	03-35-1843	Bracket - Spacer	3G-21-9SP	Bumperette - LH w/Rubber Welded
03-20-1155	Channel - Rub Rail	03-35-1845	Panel Assy - Lower, Front Ext.	3G-21-10	Bumperette Assy - LH Rear
03-20-1156	Cap - 5" Rubber	03-35-1919	Fender Assy - Rear RH	3G-21-12SP	Bumperette - RH w/Rubber Welded
03-20-1157	Cap - 5" Rubber	03-35-1957	Fender Assy - RH Front / Fiberglass	3G-21-13	Bumperette S/A
03-20-1159	Rub Rail Assy - 5" Rear of LH Rear Whlsg	03-35-1958	Fender Assy - LH Front / Fiberglass	3G-21-79	Closing Plate LH/RH
03-20-1163	Rub Rail Assy	03-35-2074	Fender Assy - Rear LH	3G-21-82	Bumperette - Plain w/Slots LH/RH
03-21-1276M	Rub Rail Assy - Service Door LH / Fiberglass	03-35-2433	Panel Assy - Tail Light, RH	3G-29-2	Rub Rail Assy - 5" Rubber, Baggage Door
03-21-1332	Skin Assy - Front Bumper	03-35-2834	Panel Assy - Tail Light LH	3G-29-3	Rubber - 5" Rub Rail, Baggage Door
03-21-1355	Panel - Closing, RH	03-35-1259	Bracket - Cap Spacing, LH	3G-29-4	Mounting Channel - Baggage Door w/5" Rub Rail
03-21-1356	Panel - Closing, LH	03-35-6476	Bracket - Front Cap	3G-29-15	Panel - Inner, Baggage Door
03-21-1388	Bumper Assy - Front	07-07-1178	Fog - Lamp Assy		
03-21-1390	Bumper Assy - Rear w/Rubber Bumper	07-07-6065GLS	Headlamp - 7" Round Glass w/HB2 Bulb, LH		
03-21-1391	Blade - Rear w/Rubber Mount	07-07-6069GLS	Headlamp - 7" Round Glass w/HB2 Bulb, RH		

# PARTS LIST

Part #	Description	Part #	Description	Part #	Description
3G-29-18	End Cap Mounting Plate	3J-31-287	Panel - RH Rear Side Service	3L-20-287	Rubber - 2.5" Rub Rail, Front of Rear Whlsg
3G-29-24	Plate - Baggage Door Nut Retaining	3J-31-289	Screen & Frame S/A - Lower Section	3L-20-288	Rubber - 2.5" Rub Rail, Rear of Rear Whlsg
3G-29-63	Panel - Lower, Baggage Door	3J-32-42	Panel - Ext. Lower Section	3L-20-289	Rubber - 2.5" Rub Rail, Rear Side Service Door
3G-29-64	Panel - Lower, Baggage Door	3J-32-54	Kick Panel - Interior Door	3L-20-290	Rubber - 5" Rub Rail, Front of Fuel Door
3G-30-1	Rub Rail Assy - 5" Rubber, Battery Door	3J-32-94	Lock - Body Assy	3L-20-291	Rubber - 5" Rub Rail, Front of Condenser Door
3G-30-2	Rubber - 5" Rub Rail, Battery Door	3J-32-116	Panel - Reinforce Kick Panel	3L-20-292	Rubber - 5" Rub Rail, Rear Side Service Door
3G-30-3	Mounting Channel - Battery Door w/5" Rub Rail	3J-32-157	Kick Panel S/A - Entrance Door Interior Lower	3L-20-293	Rubber - 5" Rub Rail, Rear of Rear Whlsg
3G-30-8	Panel - Battery Door	3J-32-221	Panel - Upper, Sedan Entrance w/Lock	3L-20-294	Rubber - 5" Rub Rail, Front of Rear Whlsg
3G-31-6	Rub Rail Assy - 5" Rubber, Rear Side Service	3J-32-222-0001	Panel S/A - Interior Door	3L-20-295	Mounting Channel - 5" Rub Rail, Fuel Door
3G-31-12	Rubber - 5" Rub Rail, Fuel Door	3J-32-329	Frame S/A - Entrance Door	3L-20-296	Mounting Channel - 5" Rub Rail, Front of Condenser Door
3G-31-27	Hinge - Front Edge of Door	3J-33-50	Bolt - Mount Extrusion to Doors (25/Pack)	3L-20-297	Mounting Channel - 5" Rub Rail, Front of Rear Whlsg
3G-31-28	Door Assy - Fuel Filler w/Hinge (Locking)	3J-33-51	Bolt - Mount Bumperette LH/RH, 3/8-16 x 2-1/4 (10/Pack)	3L-20-298	Mounting Channel - 5" Rub Rail, Rear Side Service Door
3G-31-31	Panel - Lower, Fuel Door	3J-35-56	Panel - Front of LH Front Whlsg	3L-20-299	Mounting Channel - 5" Rub Rail, Rear of Rear Whlsg
3G-31-35	Panel - Front Side Service Door	3J-35-66	Panel - Above LH Front Whlsg	3L-20-300	Extrusion - Mount 2.5" Rub Rail, Rear Side Service Door
3G-32-12	Panel - Lower, Sedan Entrance Door	3J-35-84	Screen - Radiator LH/RH	3L-20-301	Mounting Channel - 2.5" Rub Rail, Rear of Rear Whlsg
3G-32-45	Lock Body Assy	3J-35-95	Panel - Tail Light Mounting LH	3L-20-302	Mounting Channel - 2.5" Rub Rail, Front of Rear Whlsg
3G-35-22	Panel - Front of LH Front Whlsg	3J-35-96	Panel - Tail Light Mounting RH	3L-20-310	Rub Rail - 2.5" Rubber, Front of Fuel Door
3G-35-24	Panel - Rear of LH Front Whlsg	3J-35-97	Panel - Above Front Side Service	3L-20-311	Rub Rail - 2.5" Cap, Front of Condenser Door
3G-35-27	Panel - Between Baggage Door	3J-35-100	Panel - Rear of LH Rear Whlsg	3L-20-329	Mounting Channel - 5" Rub Rail
3G-35-29	Panel - Lower, Rear of LH Rear Side Service	3J-35-103	Panel - Front of RH Rear Whlsg	3L-20-330	Rubber - 5" Rub Rail, Rear of Front Whlsg
3G-35-37	Panel - Lower, Rear of RH Rear Side Service	3J-35-291	Panel S/A - Front of RH Front Whlsg	3L-20-332	Rub Rail Assy - 5" Rubber, Rear of Front Whlsg
3G-35-54	Panel - Center Below Windshield	3J-35-292	Panel - Front of Whlsg w/Cut-Out	3L-20-333	Rubber - 2.5" Rub Rail, Rear Side Service
3G-35-68	Panel - Upper, Rear of RH Rear Side Service Door	3J-35-293	Box S/A - Mount Entrance Door	3L-20-348	Rail Cap - Rear of Front Whlsg
3G-35-69	Panel - Upper, Rear of LH Rear Side Service Door	3J-35-297	Door S/A - Exterior Entrance	3L-20-392	Seal - Belt & Sash Rail (500 Foot Roll)
3G-35-82	Panel - Front of RH Rear Whlsg	3K-21-3	Bumper Assy - Rear w/Rubber Bumper	3L-20-393	Molding - Finishing Rear of LH Rear Side Service Door
3G-35-83	Panel - Lower, Rear of LH Rear Side Service Door	3K-21-4	Blade - Rear Bumper w/Holes	3L-20-394	Molding - Finishing Rear of RH Rear Side Service Door
3G-35-84	Panel - Lower, Rear of RH Rear Side Service Door	3K-21-5	Retainer & Rub Rail Assy - w/Stud Strip	3L-20-405	Molding - Bottom Ext. Cap at Radiator Door & Louvered Panels
3G-35-185	Panel - LH Front Corner Below Windshield	3K-21-7	Panel - Closing, Rear Bumper w/Energy ABS Bumper / Fiberglass	3L-20-418	Mounting Channel - 2.5" Rub Rail, Rear Side Service
3G-35-210	Panel - Below Radiator Door LH/RH	3K-31-17	Bar - Tail Light Mount	3L-20-428	Rub Rail Assy - 5" Rubber, Small Baggage Door
3G-35-211	Panel - Below Radiator Screen	3K-31-124	Panel Assy - Tail Light LH/RH	3L-20-430M197	End Cap - Belt & Sash Molding
3G-35-279	Panel - Rear of LH Front Whlsg	3K-35-14	Panel - Upper, Rear of RH Rear Side Service	3L-20-431	Molding - Belt & Sash Rail
3G-35-397	Panel - Front of RH Rear Whlsg	3K-35-27	Panel - Upper, Rear of RH Rear Side Service Door w/Imm Heater	3L-20-433	Molding - Aluminum Belt Rail LH/RH Engine Door
3G-35-398	Panel - Front of LH Rear Whlsg	3L-1-307	Panel S/A - Lower LH Switch w/o Joystick	3L-20-435	Plastic Retainer - Belt & Sash Molding
3J-20-23	Molding - Belt & Sash 196" / Alum	3L-20-18	Fascia Below Windshield / Fiberglass	3L-20-436	Retainer - Mount Aluminum LH/RH Sash & Belt Rail Front or Rear
3J-29-34	Door Assy - Baggage w/Aluminum Rub Rail	3L-20-38	Mounting Channel - 2.5" Rub Rail, Fuel Door	3L-20-437	Retainer - Aluminum Belt Rail LH/RH Engine Door
3J-30-6	Plate & Bar S/A - Pivot Battery Door	3L-20-39	Mounting Channel - 2.5" Rub Rail, Battery Door	3L-20-441	Rub Rail Assy - 5" Rubber, Rear Side Service
3J-30-15	Lock Body, Catch Complete	3L-20-40	Mounting Channel - 2.5" Rub Rail, Rear Side Service	3L-20-442	Rubber - 5" Rub Rail, Rear Side Service Door
3J-30-18	Latch Assy - Rear Side Service & Engine Access	3L-20-41	Extrusion - Mount 2.5" Rub Rail, Rear of Rear Side Service Door	3L-20-443	Mounting Channel - 5" Rub Rail, Rear Side Service Door
3J-30-26	Plate & Bar S/A - Battery Door	3L-20-45	Mounting Channel - Belt & Sash 8'	3L-20-461	Extrusion - Mount Belt Rail LH/RH Rear
3J-30-30	Plate - Battery Door Seal Top	3L-20-46	Mounting Channel - Belt Rail LH/RH Engine Door	3L-20-462	Molding - Rubber Belt Rail Sidewall
3J-30-32	Seal - Rubber, Battery & Central Heat	3L-20-47	Mounting Channel - LH Belt Rail at Rear Corner	3L-20-541	Plate - Wiper
3J-30-33	Seal - Rubber Battery Door Bottom	3L-20-49	Mounting Channel - RH Belt Rail at Rear Corner	3L-21-160	Trim - Closing LH/RH Rear Lower Corner
3J-30-45	Bolt - End, Door Catch	3L-20-53	Rubber - 2.5" Rub Rail Between Doors	3L-21-174	Closing Panel - Top of Rear Energy Abs Bumper
3J-31-155	Screen & Frame S/A - Upper Section (Non-Painted)	3L-20-68	Rubber - 2.5" Rub Rail, Fuel Door	3L-21-176	Trim - Closing LH Rear Corners at Bumper
3J-31-184	Door Assy - RH Side Service w/Alum Rub Rail	3L-20-69	Rubber - 2.5" Rub Rail, Battery Door	3L-21-177	Trim - Closing RH Rear Corners at Bumper
3J-31-190	Bar - Locking Lower	3L-20-70	Rubber - 2.5" Rub Rail, Rear Side Service	3L-21-178	Closing Panel - Top of Rear Energy Abs Bumper
3J-31-191	Door Assy - Engine RH (Stainless)	3L-20-71	Rubber - 2.5" Rub Rail, Rear of Rear Side Service	3L-23-57-0001	Fender - Front / Fiberglass
3J-31-194	Panel - Lower, RH Rear Engine Door	3L-20-76	Rubber - Belt & Sash, 40' Roll	3L-23-58-0001	Fender - Rear / Fiberglass
3J-31-195	Panel - Upper, RH Rear Engine Door	3L-20-77	Molding - Rubber Belt Rail LH/RH Engine Door	3L-29-21	Seal - Baggage Door
3J-31-197	Bar - Locking Lower	3L-20-85	Wiper Motor Cover / Fiberglass	3L-29-25	Extrusion - Baggage Door Bottom
3J-31-258	Door S/A - Front Side Service (Less Rub Rail)	3L-20-97	Molding - Belt & Sash 466" / Rubber	3L-29-30	Panel - Inner, Baggage Door
3J-31-259	Frame S/A - Front Side Service Door	3L-20-98	Molding - Belt & Sash 45' / Rubber	3L-29-31	Panel - Ext. Lower, Baggage Door
3J-31-263	Panel - Front Side Service	3L-20-112M	End Cap - Belt & Sash Molding	3L-29-32	Panel - Ext. Upper, Baggage Door
3J-31-264	Door S/A - Front Side Service (Less Lock Tumbler)	3L-20-281	Rub Rail Assy - 5" Rubber, Front of Condenser Door	3L-29-36	Pocket S/A - Spot-weld, Baggage Door
3J-31-265	Door S/A - Front Side Service (Less Rub Rail)	3L-20-282	Rub Rail Assy - 5" Rubber, Front of Fuel Door	3L-29-55	Door Assy - Baggage w/Rubber Rub Rail / Painted
3J-31-266	Frame S/A - Front Side Service Door	3L-20-283	Rub Rail Assy - 5" Rubber, Front of Rear Whlsg	3L-29-56	Rub Rail Assy - 5" Rubber, Baggage Door
3J-31-267	Panel - Front Side Service Door	3L-20-284	Rub Rail Assy - 5" Rubber, Rear of Rear Whlsg	3L-29-58	Mounting Channel - 5" Rub Rail, Baggage Door
3J-31-285	Panel - LH Rear Side Service	3L-20-285	Rub Rail Assy - Rear Side Service Door	3L-29-59	Rubber - 5" Rub Rail, Baggage Door (Cut to 55.250' +/- .160)

# PARTS LIST

Part #	Description	Part #	Description	Part #	Description
3L-29-61	Pocket Assy - Complete	3L-29-761	Door Assy - Baggage Painted	3L-30-328	Door Assy - Battery & C/H Filter w/Fixed Panel
3L-29-63	Rubber - 2.5" Rub Rail, Baggage Door	3L-29-762	Door Assy - Baggage RH #2 w/Turn Lamp	3L-30-329	Door Assy - Battery w/Key Lock & Fixed Panel
3L-29-65	Mounting Channel - 2.5" Rub Rail, Baggage Door	3L-29-763	Door Assy - Baggage Large Bay #2 LH w/Turn Lamp Painted	3L-30-330	Door Assy - Battery w/Lock/Lock & Hinged Panel
3L-29-68	Panel - Upper, Baggage Door w/Lock	3L-29-764	Door Assy - Small Baggage	3L-30-339	Panel - Battery Door Fluted w/Large Access Door & Key Lock Cut-Outs
3L-29-69	Door Assy - Baggage Large Bay #1 or #3 w/Key Lock (Painted)	3L-29-766	Door Assy - Large Baggage w/Fluted Panels	3L-30-370	Door Assy - Battery w/Large Access Door & Fixed Panels (see 3L-30-374)
3L-29-70	Handle Only - Baggage Door	3L-29-767	Door Assy - Baggage w/Turn Light RH (Stainless)	3L-30-371	Door Assy - Battery & C/H Compartment w/Latch/Lock & Fixed Panel
3L-29-71	Handle Assy - Baggage Door, Complete	3L-29-768	Door Assy - Baggage Large Bay #2 LH Less Cylinder w/Turn Lamp / Stainless	3L-30-372	Door Assy - Battery & C/H Compartment w/Lock/Lock & Fixed Panel
3L-29-73	Door Assy - Baggage Large Bay #1 or 3	3L-29-769	Door Assy - Small Baggage	3L-30-373	Door Assy - Battery & C/H w/Key Lock & Fixed Panel
3L-29-74	Panel - Upper, Baggage Door	3L-29-1009	Panel - Lower, Baggage Door w/Wheel Chair Lift	3L-30-374	Door Assy - Battery w/Large Access Door w/o Lock
3L-29-75	Panel - Lower, Baggage Door	3L-29-1039	Door Assy - #2 RH Wheelchair Lift	3L-30-375	Door Assy - Battery & C/H w/Lock/Lock & Hinged Panel
3L-29-81	Door Assy - Baggage Large Bay #1 or 3 w/Key Lock	3L-29-1076	Door Assy - Lower (Stainless)	3L-30-376	Door Assy - Battery & C/H w/Lock/Lock & Hinged Panel
3L-29-82	Panel - Upper, Baggage Door w/Lock	3L-29-1093	Panel - Upper, Baggage Door WCL w/Lights (Stainless)	3L-30-377	Door Assy - Battery & C/H w/Key Lock & Hinged Panel
3L-29-89	Panel - Upper Ext. Baggage Door LH w/Dock Light Cut-Out	3L-29-1110	Housing - Wheelchair Lift Curb Light	3L-30-387	Door Assy - Battery & C/H Filter w/Fixed Panel
3L-29-93	Panel - Upper Ext. Baggage Door RH w/Dock Light Cut-Out	3L-29-1130	Panel - Lower, Baggage	3L-30-390	Door Assy - Battery & C/H w/Key Lock & Fixed Panel
3L-29-115	Panel - Fluted Upper Ext. Baggage Door RH w/Lock & Turn Lamp Cut-Outs	3L-29-1134A	Door Assy - Lower, Wheelchair Lift / Alum	3L-30-391	Door Assy - Battery & C/H Filter w/Hinged Panel
3L-29-116	Panel - Fluted Upper Ext. Baggage Door w/Lock & Turn Lamp Cut-Outs	3L-29-1167	Frame - Baggage Door, Painted	3L-30-393	Door Assy - Battery & C/H w/Lock/Lock & Hinged Panel
3L-29-117	Door Assy - Baggage #2 LH w/Key Lock & Turn Lamp (Stainless)	3L-29-1203	Panel - Upper, Ext.	3L-30-394	Door Assy - Battery & C/H w/Key Lock & Hinged Panel
3L-29-118	Door Assy - Baggage #2 RH w/Key Lock & Turn Lamp (Stainless)	3L-29-1204	Door Assy - Baggage #1 RH w/Curb Light	3L-30-395	Panel - Battery Door w/Large Access Door
3L-29-128M	End Cap - 2.5" Rub Rail	3L-29-1212	Panel - Upper, Baggage Door	3L-30-396	Panel - Battery Door w/Large Access & Lock
3L-29-130	Panel - Fluted Upper Ext. Baggage Door LH w/Turn Lamp Cut-Out	3L-29-1214	Door Assy - Baggage w/Wheelchair Lift	3L-30-399	Panel - Battery Door Fluted w/Large Access & Key Lock
3L-29-131	Panel - Fluted Upper Ext. Baggage Door RH	3L-30-5	Panel - Battery Door	3L-30-400	Panel - Battery Door Fluted w/Large Access Door Cut-Out
3L-29-132	Door Assy - Baggage Large Bay #2 LH Less Cylinder w/Turn Lamp / Stainless	3L-30-6	Frame S/A - Battery, Welded	3L-30-401	Door Assy - Painted w/Large Switch Access
3L-29-140	Panel - Upper Ext. Door LH w/Dock Light & Lock Cut-Outs	3L-30-10	Hinge - Stainless Steel, Battery Door	3L-30-402	Door Assy - Battery, Hinged (Painted)
3L-29-141	Panel - Upper Ext. Baggage Door RH w/Dock Light & Lock Cut-Outs	3L-30-12	Panel - Ext. Battery Door	3L-30-403	Door Assy - Switch Access Non-Locking
3L-29-147	Door Assy - Baggage Bay #2 LH w/Turn Lamp	3L-30-48	Door S/A - Battery, Riveted	3L-30-404	Door Assy - Switch Access w/Key Lock
3L-29-148	Door Assy - Baggage #2 RH w/Turn Lamp	3L-30-50	Panel - Battery Door	3L-30-405	Door - Switch Access (10-1/2" Long)
3L-29-149	Panel - Upper, Baggage Door LH	3L-30-54	Door S/A - Riveted Assy	3L-30-406	Spacer - Access Door
3L-29-150	Panel - Upper, Baggage Door RH w/Light	3L-30-55	Panel - Ext. Battery w/Key Lock	3L-30-407	Door - Switch Access (10-1/2" Long)
3L-29-211	Panel - Upper Ext. Baggage Door LH w/Lock & Turn Lamp Cut-Outs	3L-30-61	Door Assy - Battery	3L-30-423R58	Panel - Lower, Inner
3L-29-212	Panel - Upper Ext. Baggage Door RH w/Dock Light & Key Lock Cut-Out	3L-30-62	Door Assy - Battery & C/H Filter Compartment	3L-30-424R58	Panel - Upper, Inner
3L-29-221	Door Assy - Baggage #2 LH w/Key Lock & Turn Lamp	3L-30-64	Door Assy - Battery & C/H (Less Tumbler Assy)	3L-30-549	Door Assy - Battery, Fluted w/Key Lock, Sliding
3L-29-222	Door Assy - Baggage #2 RH w/Key Lock & Turn Lamp	3L-30-67	Door Assy - Battery & C/H (Less Lock Tumbler)	3L-30-552	Door Assy - Battery, Hinged Sliding Door (Painted)
3L-29-298	Panel - Upper, Small Baggage Door	3L-30-82	Hinge Assy - LH, Interior Access Cover	3L-31-5	Door Assy - Condenser
3L-29-302	Panel - Lower, Small Baggage Door	3L-30-83	Hinge Assy - RH, Interior Access Cover	3L-31-6	Screen S/A - Lower
3L-29-372	Door Assy - Baggage #1 LH w/Dock Light (Painted)	3L-30-84	Latch Assy - Interior Access Cover	3L-31-7	Screen S/A - Upper
3L-29-373	Door Assy - Baggage #1 RH w/Dock Light (Painted)	3L-30-99	Frame Assy - Battery & C/H Door	3L-31-8	Handle S/A - Condenser Door
3L-29-374	Door Assy - Baggage #1 LH w/Dock Light & Key Lock (Painted)	3L-30-238	Frame Assy - Battery Door	3L-31-41	Door S/A - Front Side Service
3L-29-375	Door Assy - Baggage #1 RH w/Dock Light & Key Lock (Painted)	3L-30-249	Door - Switch Access (8-5/8" Long)	3L-31-43	Frame S/A - Front Side Service Welded
3L-29-376	Door Assy - Baggage #1 LH w/Dock Light (Stainless)	3L-30-251	Door Assy - Switch Access Non-Locking	3L-31-44	Panel - Ext., Door / Alum
3L-29-377	Door Assy - Baggage #1 RH w/Dock Light (Stainless)	3L-30-257	Panel - Battery Door w/Switch Access & Lock	3L-31-47	Door S/A - Front Side Service (Less Rub Rail)
3L-29-378	Door Assy - Baggage #1 LH w/Dock Light & Key Lock (Stainless)	3L-30-263	Door Assy - Battery w/Key Lock & Fixed Panel	3L-31-48	Door S/A - Front Side Service Welded w/Paint
3L-29-379	Door Assy - Baggage #1 RH w/Dock Light & Key Lock (Stainless)	3L-30-271	Panel - Battery Door w/Switch Access & Lock	3L-31-49	Frame S/A - Front Side Service Door
3L-29-382	Panel - Fluted Upper Ext. Baggage Door LH w/Dock Light Cut-Out	3L-30-272	Panel - Ext. Battery Door w/Access Door Cut-Out	3L-31-50	Panel - Ext. Service Door
3L-29-383	Panel - Fluted Upper Ext. Baggage Door RH w/Dock Light Cut-Out	3L-30-273	Panel - Battery Door w/Switch Access	3L-31-51	Panel Assy - Tail Light RH
3L-29-534	Hinge - Vertical, Baggage Door	3L-30-274	Door Assy - Battery & C/H w/Fixed Panel	3L-31-52	Panel - Tail Light RH
3L-29-535	Panel - Upper, Baggage RH (Stainless)	3L-30-277	Door Assy - Battery w/Key Lock & Fixed Panel	3L-31-79	Panel - Tail Light LH
3L-29-536	Panel - Lower, Baggage RH (Stainless)	3L-30-278	Door Assy - Battery & C/H Filter w/Fixed Panel	3L-31-80	Panel Assy - Tail Light LH
3L-29-537	Door Assy - Baggage #2 RH w/Wheelchair Lift (Stainless)	3L-30-280	Door - Switch Access (8-5/8" Long)	3L-31-111	Door Assy - Condenser w/5" Rub Rail (Painted)
3L-29-538	Door Assy - Baggage #2 RH w/Wheelchair Lift (Painted)	3L-30-281	Door S/A - Switch Access Locking	3L-31-168	Rail Assy - 5" Rubber, Fuel Door
		3L-30-285	Rub Rail Assy - Rear Side Service Door	3L-31-170	Channel - Mount 5" Rub Rail, Fuel Door
		3L-30-294	Door Assy - Switch Access w/Key Lock	3L-31-173	Rubber - 5" Rub Rail, Fuel Door
		3L-30-297	Door Assy - Switch Access w/Simple (Non-Lock Body) Key Lock	3L-31-207	Door Assy - Front Side Service (Less Lock Tumbler)
		3L-30-299	Door Assy - Battery & C/H w/Lock/Lock & Fixed Panel	3L-31-220	Panel - Front Junction Box Door
		3L-30-323	Door Assy - Battery & C/H w/Lock/Lock & Fixed Panel	3L-31-223	Bracket S/A
		3L-30-324	Door Assy - Battery & C/H Filter w/Hinged Panel		
		3L-30-325	Door Assy - Battery w/Key Lock & Hinged Panel		
		3L-30-327	Door Assy - Battery & C/H w/Lock/Lock & Fixed Panel		



# PARTS LIST

Part #	Description	Part #	Description	Part #	Description
3L-31-230	Panel - Blower Door w/Light Cut-Out	3L-31-802	Strap - Pull Down, 2" Nylon Web	3L-31-1225	Panel - Lower, LH Side Service Door, Interior
3L-31-452	Door Assy - Condenser w/5" Rub Rail (Non-Painted)	3L-31-819	Door Assy - Rear Engine Access RH / Stainless	3L-31-1228	Panel - RH Rear Side Service Door
3L-31-472	Door Assy - Engine RH	3L-31-820	Door Assy - Rear Engine Access LH	3L-31-1229	Panel - LH Rear Side Service Door
3L-31-473	Door Assy - Rear Engine LH	3L-31-821	Door Assy - Rear Engine Access RH (No Upper Paint)	3L-31-1247	Panel - Fluted Ext. Rear Side Service Door RH
3L-31-474	Panel - Engine Door RH	3L-31-822	Door Assy - Rear Engine Access LH (No Upper Paint)	3L-31-1248	Panel - Fluted Ext. Rear Side Service Door LH
3L-31-475	Panel - LH Engine Door	3L-31-823	Panel - Upper, LH Engine Door	3L-31-1250	Bracket - Door Support RH
3L-31-476	Frame - Interior Engine Door RH	3L-31-824	Panel - Upper, LH Engine Door	3L-31-1251	Door Assy - RH Rear Side Service
3L-31-477	Frame - Rear Engine Door LH	3L-31-847	Door Assy - Rear Engine Access RH w/Key Lock / Stainless	3L-31-1252	Door Assy - LH Rear Side Service
3L-31-481	Bar - Locking Upper	3L-31-848	Panel - Flat Upper Ext. Door RH w/Lock (Painted)	3L-31-1253	Panel - Satellite LH
3L-31-484	Panel - Upper, RH Engine Door	3L-31-853	Panel - Upper, Fuel Door	3L-31-1254	Panel - Satellite RH
3L-31-485	Panel - Upper, LH Engine Door	3L-31-854	Panel - Lower, Fuel Door	3L-31-1255	Door Assy - LH Satellite
3L-31-487	Frame - Interior Engine Door LH	3L-31-868	Door Assy - Fuel Filler w/Hinge (Locking)	3L-31-1256	Door Assy - RH Satellite
3L-31-548	Door Assy - Front Side Service w/o Bumper Extension (Stainless)	3L-31-874	Frame Assy - Fuel Compartment	3L-31-1259	Panel - RH Rear Side Service Door w/Light
3L-31-549	Door Assy - Front Side Service w/Key Lock (Stainless)	3L-31-875	Door Assy - Fuel Compartment w/Locking Filler Door	3L-31-1260	Panel - Service Door LH (Painted)
3L-31-620	Door Assy - Rear Engine Access RH w/Key Lock (Painted)	3L-31-882	Door Assy - Fuel Filler	3L-31-1265	Door Assy - Rear Side Service w/Dock Light RH (Painted)
3L-31-621	Panel - RH Engine Door w/Lock	3L-31-885	Door Assy - Fuel Compartment	3L-31-1284	Panel - Flat Upper Ext. Engine Door RH (Painted)
3L-31-670	Panel - Lower Interior, Rear Side Service LH	3L-31-897	Door Assy - Fuel Filler w/Hinge	3L-31-1285	Panel - Flat Lower Ext. Engine Door RH
3L-31-671	Panel - Lower Interior Rear Side Service RH	3L-31-899	Panel - Lower, Fuel Door	3L-31-1286	Panel - Flat Upper Ext. Engine Door LH (Painted)
3L-31-678	Panel - LH Rear Side Service Door	3L-31-900	Hinge - Mount Tail Light Door Assy	3L-31-1287	Panel - Flat Lower Ext. Engine Door LH
3L-31-679	Panel - RH Rear Side Service Door	3L-31-910	Panel - Ext. Upper Fuel Compartment	3L-31-1288	Panel - RH Rear Engine, Full Length
3L-31-680	Bar - Locking Upper	3L-31-911	Door Assy - Fuel Compartment	3L-31-1289	Panel - Flat Full Length Ext. Engine Door LH
3L-31-681	Frame Assy - Rear Side Service LH w/Inner Panel	3L-31-965	Door Assy - Fuel Compartment w/Locking Filler Door	3L-31-1291	Door Assy - Rear Engine Access LH w/Flat Panel
3L-31-682	Frame Assy - Rear Side Service RH w/Inner Panel	3L-31-977	Panel - RH Rear Side Service	3L-31-1292	Door Assy - Rear Engine Access LH w/Flat Panel
3L-31-683	Frame S/A - Rear Side Service LH	3L-31-978	Frame S/A - Rear Side Service RH w/Key Lock	3L-31-1294	Door Assy - Rear Engine Access RH w/Flat Panel / Stainless
3L-31-684	Frame S/A - Rear Side Service RH	3L-31-978	Frame S/A - Rear Side Service LH w/Key Lock	3L-31-1295	Door S/A - Rear Engine Access RH / Stainless
3L-31-685	Door Assy - Rear Side Service LH (Painted)	3L-31-979	Frame Assy - Rear Side Service RH w/Inner Panel	3L-31-1343	Panel - Flat Upper Ext. Engine Door RH w/Lock Cut-Out / Stainless (Painted)
3L-31-686	Door Assy - Rear Side Service RH (Painted)	3L-31-980	Frame Assy - Rear Side Service LH w/Inner Panel	3L-31-1344	Panel - Flat Full-Length Ext. Door RH w/Lock Cut-Out
3L-31-687	Panel - Fluted Ext. Rear Side Service Door LH	3L-31-981	Panel - Fluted Ext. Rear Side Service Door LH w/Lock Cut-Out	3L-31-1345	Panel - Ext. Door RH w/Key Lock
3L-31-688	Panel - Fluted Ext. Rear Side Service RH	3L-31-982	Panel - Fluted Ext. Rear Side Service Door RH w/Lock Cut-Out	3L-31-1346	Door Assy - Motor Access RH w/Key Lock / Painted
3L-31-697	Door Assy - Rear Side Service LH (Stainless)	3L-31-983	Panel - Ext. Door LH w/Lock Cut-Out	3L-31-1347	Door Assy - Rear Engine Access RH w/Flat Panel & Lock / Stainless
3L-31-698	Door Assy - Rear Side Service RH (Stainless)	3L-31-984	Panel - Ext. Rear Side Service Door RH w/Lock Cut-Out	3L-31-1348	Door Assy - Rear Engine Access RH w/Flat Panel / Stainless
3L-31-709	Panel - Front Ext. Junction Box Door (Stainless)	3L-31-993	Door Assy - Rear Side Service LH w/Key Lock (Painted)	3L-31-1356	Lock Body Assy - Lock Bar Mechanism
3L-31-71	Panel - RH Rear Engine Door	3L-31-994	Door Assy - Rear Side Service RH w/Key Lock (Painted)	3L-31-1373	Door Assy - Rear Side Service LH w/Key Lock (Painted)
3L-31-710	Panel - Front Junction Box Door (Painted)	3L-31-1020	Panel - Upper, LH Engine Door w/Lock	3L-31-1376	Door Assy - Rear Side Service RH w/Key Lock (Stainless)
3L-31-711	Panel - Front Junction Box Door Exterior Flat w/Lock	3L-31-1021	Door Assy - Rear Engine Access RH w/Key Lock (No Upper Paint)	3L-31-1378	Door Assy - Rear Side Service LH w/Key Lock / Stainless
3L-31-712	Panel - Front Junction Box Door w/Lock	3L-31-1069	Frame Assy - Fuel Door	3L-31-1380	Panel - RH Rear Side Service Door
3L-31-737	Panel Assy - Ext., Junction Box Door w/One Receptacle	3L-31-1073	Door Assy - Fuel Filler w/Hinge	3L-31-1383	Panel - Ext. Door LH w/Lock Cut-Out
3L-31-738	Panel Assy - Junction Box Door Ext. w/One Receptacle Cut-Out (Stainless)	3L-31-1074	Door Assy - Fuel Filler w/Hinge	3L-31-1386	Panel - Fluted Ext. Rear Side Service Door RH w/Lock Cut-Out
3L-31-739	Panel Assy - Junction Box Door Ext. w/Two Receptacle Cut-Outs (Painted)	3L-31-1143	Door Assy - Satellite LH	3L-31-1388	Panel - Fluted Ext. Rear Side Service Door LH w/Lock Cut-Out
3L-31-740	Panel Assy - Junction Box Door Ext. w/Two Receptacle Cut-Outs / Stainless	3L-31-1144	Door Assy - Satellite RH	3L-31-1453	Angle - Door Support Mount LH
3L-31-741	Panel Assy - Junction Box Door Ext. w/One Receptacle & Lock Cut-Out (Painted)	3L-31-1151	Door Assy - Rear Motor Access LH / Painted	3L-31-1454	Angle - Door Support Mount RH
3L-31-742	Panel Assy - Door Ext. w/One Receptacle & Lock Cut-Out	3L-31-1152	Door Assy - Rear Motor Access RH	3L-31-1457	Panel - RH Rear Engine Door
3L-31-743	Panel Assy - Junction Box Door Ext. w/Two Receptacle & Lock Cut-Outs (Painted)	3L-31-1153	Frame Assy - Rear Motor Access Door LH	3L-31-1458	Panel - LH Rear Engine Door
3L-31-744	Panel Assy - Junction Box Door Ext. w/Two Receptacle & Lock Cut-Outs / Stainless	3L-31-1154	Frame Assy - Rear Motor Access Door RH	3L-31-1492	Door Assy - Rear Engine Access LH w/Flat/ Fluted Panels / Stainless
3L-31-748	Door Assy - Front Junction Box No Key w/One Receptacle (Painted)	3L-31-1158	Panel - Ext. Door LH	3L-31-1493	Door Assy - Rear Engine Access RH w/Flat/ Fluted Panels / Stainless
3L-31-749	Door Assy - Front Junction Box No Key w/One Receptacle (Stainless)	3L-31-1159	Panel - Ext. Door RH	3L-31-1494	Panel - Fluted Lower Ext. Engine Door LH
3L-31-751	Door Assy - Front Junction Box w/One Receptacle Cover & Key Lock (Stainless)	3L-31-1164	Locking Bar - Upper	3L-31-1495	Panel - Fluted Lower Ext. Engine Door RH
3L-31-754	Door Assy - Front Junction Box Access w/Key Lock (Painted)	3L-31-1168	Frame - Back-Up Light Mount LH/RH	3L-31-1496	Panel - Satellite Door LH
3L-31-756	Door Assy - Front Junction Box No Key (Painted)	3L-31-1169	Door Assy - Blower / Fiberglass	3L-31-1497	Panel - Satellite Door RH
3L-31-757	Door Assy - Front Junction Box Access (Stainless)	3L-31-1194	Bracket - Door Support LH	3L-31-1499	Door Assy - Satellite LH
		3L-31-1196	Plate Assy - Door Locator Pin	3L-31-1500	Door Assy - Satellite RH
		3L-31-1213	Door Assy - RH Rear Side Service	3L-31-1583	Door Assy - Rear Engine Access LH w/Flat Panel / Stainless
		3L-31-1214	Door Assy - LH Rear Side Service / Painted	3L-31-1584	Door Assy - Rear Motor Access RH w/Flat Panel
		3L-31-1215	Frame S/A - RH Rear Side Service	3L-31-1586	Panel - Flat Upper Ext. Engine Door LH
		3L-31-1216	Frame S/A - LH Rear Side Service		
		3L-31-1217	Frame Assy - RH Rear Service w/Inner Panel		
		3L-31-1218	Frame Assy - LH Rear Service w/Inner Panel		
		3L-31-1224	Panel - Lower, RH Side Service Door, Interior		

# PARTS LIST

Part #	Description	Part #	Description	Part #	Description
3L-31-1587	Panel - Flat Upper Ext. Engine Door RH Painted	3L-35-428	Panel - Below Radiator Inlet LH	3L-35-1585	Seal - Foam, LH
3L-31-1595	Panel S/A - Ext.	3L-35-429	Panel - Below Radiator Inlet RH	3L-35-1586	Seal - Foam, RH
3L-31-1596	Panel - Upper, LH	3L-35-590	Panel - Front of Fuel Door	3L-35-1666	Radiator Inlet - LH w/Full Vents / ABS
3L-31-1601	Door Assy - Rear Motor Access LH w/Flat/Fluted Panels	3L-35-591	Panel - Rear of RH Rear Whlshg	3L-35-1787	Panel - RH Tail Light w/Stop/Turn Light/Vents/ Glad Hand / Fiberglass
3L-31-1602	Door Assy - Engine, RH	3L-35-592M	Panel - Front of RH Rear Whlshg	3L-35-2277	Panel - Tail Light LH LED / Fiberglass
3L-31-1603	Door Assy - Rear Engine Access RH w/Flat Panel & Lock / Stainless	3L-35-593	Panel - Lower, Ext. RH (Painted)	3L-35-2448	Panel - Tail Light RH LED / Fiberglass
3L-31-1604	Panel - Flat Upper Ext. Engine Door RH w/Lock Cut-Out /Stainless	3L-35-594	Panel - Rear of Condenser Door	3L-59-63X	Frame - Plain Floor (5 ft. Repair Section)
3L-31-1893	Spring - Torsion	3L-35-595	Panel - Front of Condenser Door	3L-59-576	Post - Rear of Baggage Compartment #3 LH
3L-31-2238	Door Assy - Satellite LH w/Cut-Outs	3L-35-597	Panel - Rear of LH Rear Whlshg	3L-59-577	Post - Rear of Baggage Compartment #3 RH
3L-31-2239	Door Assy - Satellite RH w/Cut-Outs	3L-35-598	Panel - Front of LH Rear Whlshg	3L-59-578	Post - Rear of Baggage Compartment #3 RH
3L-31-2240	Frame - Light	3L-35-599	Panel - Rear of RH Front Whlshg	3L-59-583	Post Assy - Front Truss RH
3L-31-2243	Panel - Access Door LH	3L-35-600	Panel - Rear of LH Front Whlshg	3L-59-592	Rail - Skid Below Baggage Door (61.875" Long)
3L-31-2244	Panel - Access Door Fluted LH	3L-35-603	Panel - Above RH Rear Side Service Door	3L-59-698	Post - Front of Battery Door
3L-31-2246	Panel - Access Door RH	3L-35-605	Panel - Above RH Rear Side Service Door	3L-59-699	Post - Rear of Battery Door
3L-31-2247	Panel - Access Door Fluted RH	3L-35-606	Panel - Rear of RH Rear Whlshg	3L-59-728	Post - Baggage Door Jam LH/RH
3L-31-2256	Door Assy - Access, LH	3L-35-607	Panel - Rear of LH Rear Whlshg	3L-59-738	Tube - Diagonal Tying Rear Bulkhead to Rear Post LH/RH
3L-31-2257	Door Assy - Access, RH	3L-35-608	Panel - Front of RH Rear Whlshg	3L-59-2464	Post - Baggage Bay, Between #1 & #2
3L-31-2258	Door - Access, LH (Painted)	3L-35-609	Panel - Front of LH Rear Whlshg	3L-76-30X	Rail - Below Side Windows (5 ft. Repair Section)
3L-31-2259	Door - Access, RH (Painted)	3L-35-610	Panel - Rear of Fuel & Battery Door	3M-29-90	Rod - Mounting Baggage Door Handle
3L-31-2265	Door - Radiator w/Logo Area	3L-35-612	Panel - Front of Fuel Door	3M-29-108	Eye Bolt
3L-31-2327	Door Assy - Rear Side Service RH	3L-35-613	Panel - Lower, Ext.	3M-31-885	Bumper - Rubber
3L-31-2328	Panel - Ext. RH	3L-35-614	Panel - Rear of LH Front Whlshg	3M-32-360	Latch Pad
3L-31-2389	Panel - Engine Door, LH	3L-35-615	Panel S/A - Rear of RH Front Whlshg	3R-20-14	Washer - Mylar (Pack of 100)
3L-31-2390	Panel - Lower, LH	3L-35-616	Panel S/A - Rear of LH Front Whlshg	3R-21-21	U-Bracket
3L-31-2391	Frame Assy	3L-35-618	Panel - Front of Condenser Door	3R-21-29	End Plate - Bumperette
3L-31-2392	Door Assy - Engine, LH (Painted)	3L-35-621	Panel - Above Condenser Door	3R-29-13	Panel - Upper, Baggage Door
3L-31-2393	Door Assy - Engine, LH (Stainless)	3L-35-643	Panel - Rear of LH Rear Side Service Door	3R-29-14	Panel - Lower, Baggage Door
3L-32-43	Recessed Grip	3L-35-644	Panel - Rear of RH Rear Side Service	3R-30-10	Hinge - Rubber 28"
3L-32-89	Door S/A - Entrance Riveted	3L-35-651	Angle - Finishing Above LH Rear Whlshg	3R-30-39	Channel S/A - Prop Mounting Welded
3L-32-100	Panel - Upper, Sedan Entrance Door w/Lock	3L-35-732	Panel - Below Radiator Inlet LH	3R-31-257	Panel, Lower, LH Engine Door
3L-32-180-0001	Door Assy - Entrance Less Lock & Upper Sash	3L-35-733	Panel - Below Radiator Inlet RH	3R-31-281	Lock Body Assy
3L-32-422-0001	Door Assy - Sedan Entrance	3L-35-750	Radiator Inlet - LH / Fiberglass	3R-59-108	Channel - Above Battery Door
3L-32-423	Door S/A - Entrance, Frame/Insulation & Ext. Panel	3L-35-751	Radiator Inlet - RH / Fiberglass	3R-59-59X	Rail - Skirt 5' Repair Section w/Holes
3L-32-424	Panel - Sedan Entrance Door	3L-35-761	Front Mask w/Plenum / Fiberglass	7L-7-10	Bezel - LH/RH
3L-33-1	Red Reflective	3L-35-805	Roof Cap - Rear 140" / Fiberglass	7L-7-156LED	Tail Lamp - Banana LED
3L-33-2	Reflector - Amber	3L-35-1096	Panel - Rear of LH Rear Whlshg	7L-8-1189	Decal
3L-33-480	End Cap - Rubber	3L-35-1097	Panel - Front of LH Rear Whlshg	7L-8-696	Decal
3L-35-2	Panel - Front of LH Front Whlshg	3L-35-1098	Panel - Rear of RH Rear Whlshg	DL3/D4505FMK	MCI DL3 to D4505 Front Mask Upgrade Kit
3L-35-4	Panel - Above Front Whlshg RH/LH	3L-35-1099	Panel - Front of RH Rear Whlshg	HB2/9007	Adaptor - Headlamp to OEM Harness
3L-35-8	Panel - Between Baggage & Rear of Battery	3L-35-1159	Panel - Lower, Rear of LH Rear Service w/Energy ABS Bumper		
3L-35-19	Panel - Above Condenser Door	3L-35-1167	Panel - Lower, Rear of RH Rear Side Service w/Energy ABS Bumper		
3L-35-22	Panel - Front of LH Rear Whlshg	3L-35-1174	Seal - Foam Sealing Ext. Panel LH		
3L-35-140	Panel S/A - Front of Front Whlshg RH w/Switch	3L-35-1175	Seal - Foam Sealing Ext. Panel RH		
3L-35-141	Panel - Front of RH Front Whlshg w/Switch	3L-35-1178	Panel - Bumper Filler Rear LH		
3L-35-143	Door S/A - Ext. Entrance Door Switch Cover	3L-35-1179	Panel - Bumper Filler Rear RH		
3L-35-152	Trim Angle - Finishing Front LH Lower Corner at Front Bumper (Vertical)	3L-35-1219	Panel - Above Rear Side Service Doors		
3L-35-153	Trim Angle - Finishing Front RH Lower Corner at Front Bumper (Vertical)	3L-35-1220	Panel - Above RH Rear Side Service Door		
3L-35-155	Panel - Lower, Rear of RH Rear Side Service w/ Energy ABS Bumper	3L-35-1285	Cap Assy - Rear Ext. Roof 137" / Fiberglass		
3L-35-156	Panel - Bumper Filler Rear LH w/Energy Abs Bumper	3L-35-1286	Cap Assy - Rear Ext. Roof 140" / Fiberglass		
3L-35-157	Panel - Between Baggage Door	3L-35-1287	Panel - Rear of RH Rear Whlshg		
3L-35-165	Panel - Rear of Condenser Door	3L-35-1287M	Panel - Rear of RH Rear Whlshg		
3L-35-407	Panel - Upper Front	3L-35-1288	Panel - Rear of LH Rear Whlshg		
3L-35-408	Panel - Lower Front	3L-35-1341	Panel - Upper, Rear of LH Side Service		
		3L-35-1342	Panel - Upper, Rear of RH Side Service		
		3L-35-1374	Panel - RH Tail Light w/ Stop/Turn Light / Fiberglass		
		3L-35-1376	Panel - LH Tail Light w/ Stop/Turn Light / Fiberglass		
		3L-35-1581	Panel - RH Tail Light w/ Stop/Turn Light w/Vents / Fiberglass		
		3L-35-1583	Radiator Inlet - RH w/Full Vents / ABS		

# TERMS AND CONDITIONS OF SALE

## Pricing

All orders must total \$50.00 or more. Prices are subject to change without notice. Orders will be invoiced at the price in effect at the time of receipt of orders.

## Claims

If you receive damaged product from the carrier, you must make notation of damage with the carrier at time of receipt of product or you can refuse the entire shipment. Damage claims must be made within 10 days after receipt of product. IBP Industries, Inc. will not issue credit on any damaged product that has exceeded this ten day limit.

If you have been shorted items from your shipment, you must file a shortage claim within 2 days after receipt of product. IBP Industries, Inc. will not issue credit or reship product that has exceeded this two day limit.

## Warranty

The warranty period for each product starts on the date of original purchase. IBP Industries, Inc. warrants that on the date of original purchase this product will be free from defects in material or workmanship. If during the warranty period, this product is

found to be defective in material or workmanship, it will be repaired or exchanged at IBP Industries, Inc. option, with no additional product charge. Warranty does not include repair or exchange when a problem results from accident, disaster, misuse, abuse, non-IBP Industries, Inc. modification, improper installation, or normal wear and tear. For product not manufactured by IBP Industries, Inc., the warranty will match that of the original manufacturers. To obtain warranty service, you must during the warranty period, return the product, along with proof of original purchase, to IBP Industries, Inc. You must insure it or bear the risk of loss or damage in transit, prepay the shipping charges, and use the original shipping container or equivalent. IBP Industries, Inc. will pay return shipping charges within the contiguous forty-eight states.

## Product Returns

IBP Industries, Inc. will accept returned products under warranty or for credit within 30 days of product invoice date. Returns will not be accepted for special order product or custom made product. ALL RETURNS MUST HAVE A RETURN AUTHORIZATION NUMBER. To obtain a Return Authorization

Number, please contact our Customer Service Department at 800-468-5287. Returns after 30 days from invoice date are subject to a twenty-percent (20%) reconditioning and repackaging charge if necessary.

A copy of the packing list must accompany the returned product to ensure proper credit is issued. Product must be returned in the original packaging or its equivalent. You must insure the product or bear the risk of loss or damage in transit. IBP Industries, Inc. will not issue credit on lost or damaged product in transit to us.

Our objective in defining these procedures is both to provide better and more efficient service, and to ensure that all our customers are afforded fair treatment resulting from a defined and consistent policy.

**IBP Industries, Inc.**  
**2055 Sprint Boulevard**  
**Apopka, FL 32703**

## NOTES:

---



**To Order**  
or for more information,  
contact our Customer Service Department

**800.468.5287**  
**[info@ibpindustries.com](mailto:info@ibpindustries.com)**

**[www.ibpindustries.com](http://www.ibpindustries.com)**

**January 2015**