



**MCI**  
**102 DL3**

**B O D Y   P A R T S   C A T A L O G**



**BEFORE**

**MCI DL3 To D4505**

**Conversion**

**AFTER**



**Better Than OEM!**



- Crystal Glass Halogen Lamps
- Increased Safety • Longer Life
- Paintable Bezels

## **Complete Front End Conversion Kit# DL3/D4505FMK**

- Installs Directly To Original Frame
- No Frame Modification Required
- All Mounting Hardware Included
- No Special Tools Required

**Kit Includes:** Lower Cap, Headlamp/Turn Assemblies, Mounting Brackets, Wiring Harness, Mounting Hardware

## **Other Optional D/DL Upgrades from IBP.**

**D4500 Style Tail Light Panels**  
(See D4505 Catalog)



3L-35-2277



3L-35-2448

**Conversion Add-On Kits**  
(See Page 6)



M1-00660LP

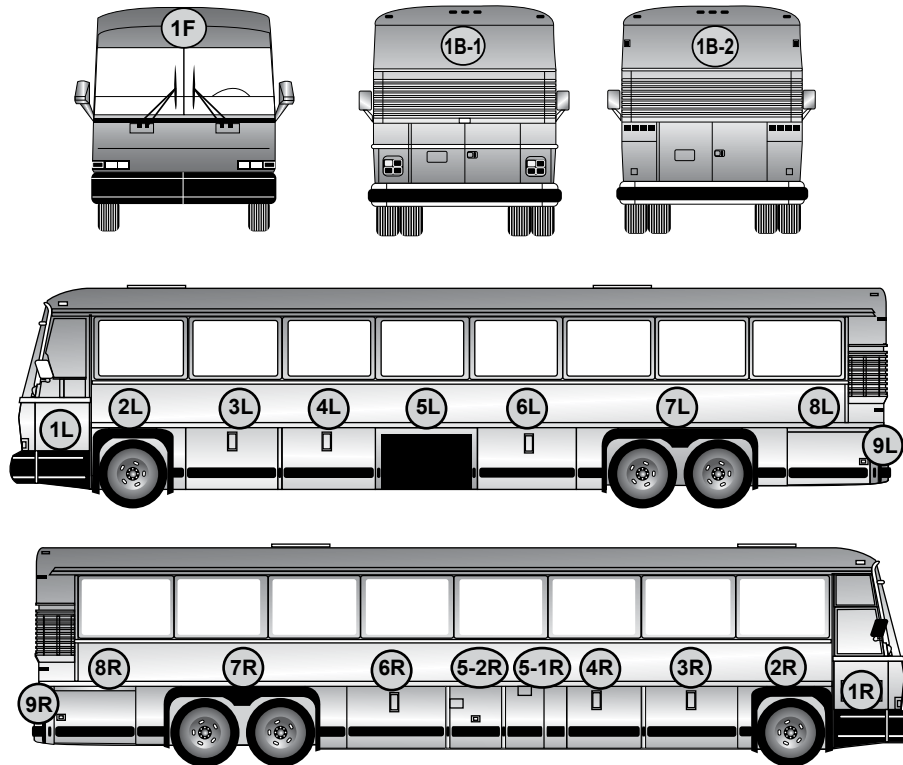
**LED Banana Lights**  
(See Page 6)



7L-7-156LED

# Location Key for MCI 102 DL3

## Door Assemblies, Body Panels, Rub Rails & Components



**L & R** following each location number indicates left & right.  
**F & B** indicates front & back.

## INDEX

<b>Parts &amp; Components</b> .....	<b>Page</b>
Baggage Door Components.....	10
Frame repair Sections .....	10
Rub Rails, Belt & Sash .....	31 & 32
Parts List.....	33

### Left Side of Bus

<b>Location</b> .....	<b>Page</b>
1F .....	2
1B-1 .....	3-5
1B-2 .....	6-9

### Left Side of Bus

<b>Location</b> .....	<b>Page</b>
1L.....	11
2L.....	12
3L.....	13
4L.....	14

5L.....	15
6L.....	16
7L.....	17
8L.....	18
9L.....	19

### Right Side of Bus

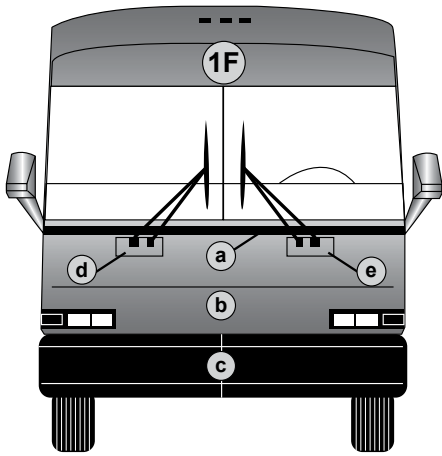
<b>Location</b> .....	<b>Page</b>
1R.....	20
2R.....	21
3R.....	22
4R.....	23
5-1R.....	24
5-2R.....	25 & 26
6R.....	27
7R.....	28
8R.....	29
9R.....	30

# Location 1F

Location 1F

a b d e

## Front Panels & Trim



### Front Fascia Molding

a 3L-20-18

Above Front Cap - Fiberglass Only



### Front Fiberglass Cap

b 3L-35-761

Front Mask w/o Plenum / Fiberglass



### Front Under Windshield Stainless Panels

a 3L-35-407

Panel - Upper Front

b 3L-35-408

Panel - Lower Front



d e 3L-20-85 Wiper Motor Cover / Fiberglass



## Hi Performance SIRIUS Head Lamps

7J-7-87HOL Hi/Low Beam  
7J-7-36HOH Hi Beam



## Avoid Headlight Overrun

45% More Light on Low Beam  
30% More Light on High Beam

Complete  
Hi/Lo Conversion Kit  
Available

## AFTER

## BEFORE



See Front Inside Cover for Complete  
Front End Conversion Kit

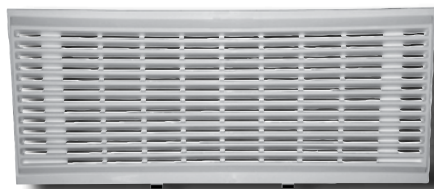
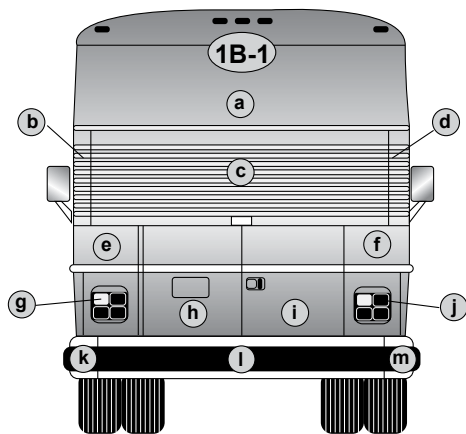


# Location 1B-1

Location 1B-1

a b c d k l m

## Rear Fiberglass Panels, Bumpers & Components - Early Model



c 3L-31-1169

Door Assy - Blower /  
Fiberglass [44866]



### Exterior Rear Cap Assembly

See page 6  
for late model application.

a 3L-35-805

Roof Cap - Rear 140" /  
Fiberglass (45959)

### Exterior Louvered Panels (45959)



b

3L-35-1666

Radiator Inlet -  
LH w/Full Vents /  
Fiberglass  
[47071], (1996 prod)

3L-35-750

Radiator Inlet -  
LH / Fiberglass

3L-35-1174

Seal [45959]



d

3L-35-1583

Radiator Inlet -  
RH w/Full Vents /  
Fiberglass  
[47071], (1996 prod)

3L-35-751

Radiator Inlet -  
RH Fiberglass

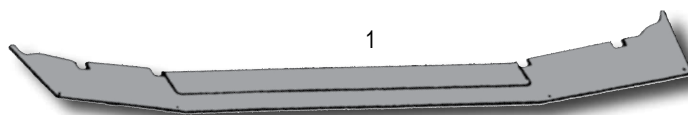
3L-35-1175

Seal [45959]

### Rear Energy Absorbing Bumper k l m

1 3L-21-178

Closing Panel - Top of Rear  
Energy Abs Bumper [47071]



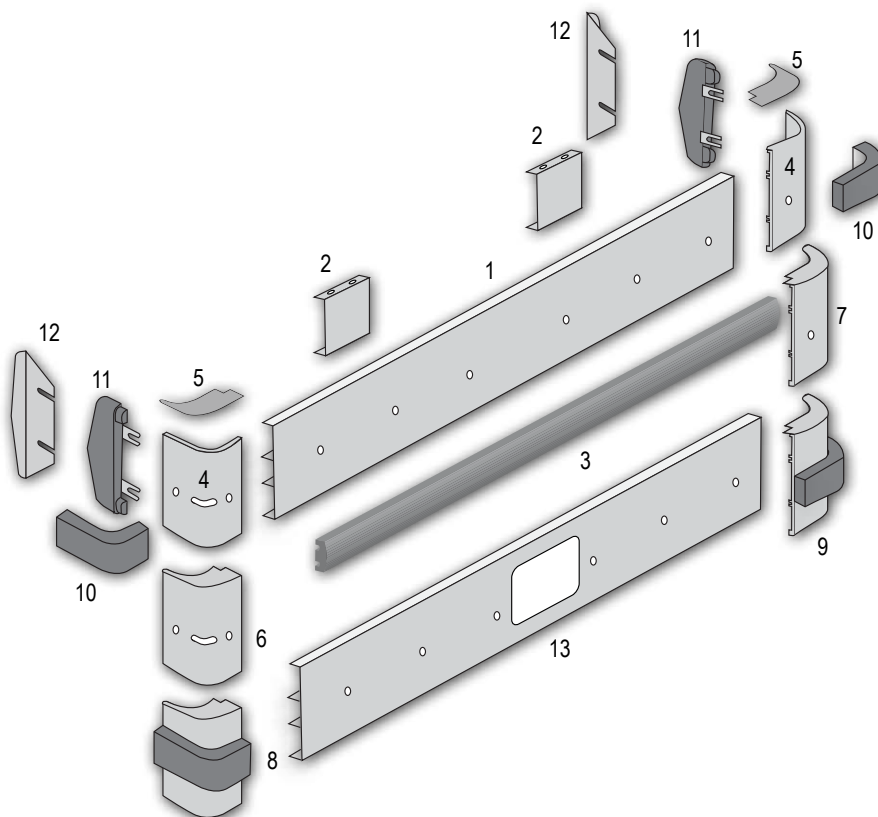
### Rear Bumper Assemblies k l m

3K-21-3 Bumper Assy - Rear w/Rubber Bumper

- 1 3K-21-4 Blade
- 2 3R-21-21 U-Bracket
- 3 3K-21-5 Retainer and Rub Rail Assembly w/Stud Strip
- 4 3G-21-82 Bumperette - Plain w/Slots LH/RH
- 5 3G-21-79 Closing Plate LH/RH
- 6 3G-21-10 Bumperette Assy - LH, Rear w/Holes, Welded
- 7 3G-21-13 Bumperette Assy - RH, Rear w/Holes, Welded
- 8 3G-21-9SP Bumperette Assy - LH, Rear Welded w/Rubber
- 9 3G-21-12SP Bumperette Assy - RH, Rear Welded w/Rubber
- 10 3G-21-1 Bumperette Assy - Rubber Rub Rail LH/RH
- 11 3L-33-480 Cap - Closing LH/RH Rear Bumperettes
- 12 3R-21-29 End Plate - Bumperette
- 13 Call C/S Blade - w/Hitch

- n/i 3J-33-51 Bolt - Mount Bumperette LH/RH, 3/8-16 x 2 1/4
- n/i 3R-20-14 Washer
- n/i 3R-21-9 Washer - Bumperette
- n/i 3R-21-28 Washer - Bumperette
- n/i 3R-21-21 U-Bracket - Rear Bumper
- n/i 19-2-119 Washer - Fender 3/8 ID x 1-1/4 OD
- n/i 19-2-179 Washer - Composition
- n/i 19-3-21 Nut - Hex 3/8 - 16, Grade 5 Zinc Plated

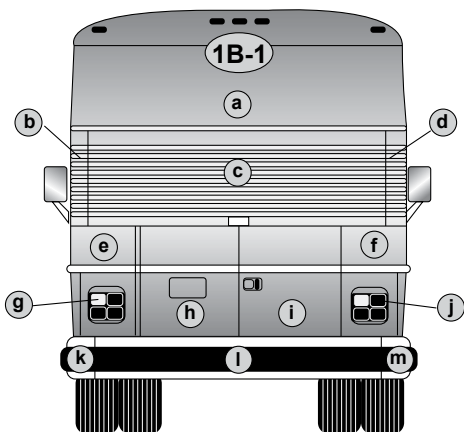
n/i - Not Illustrated



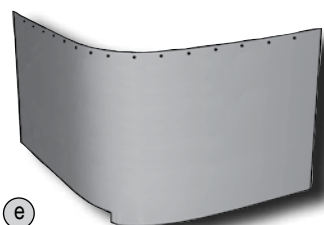
# Location 1B-1

Location 1B-1  
e f g j

## Rear Tail Light Assemblies & Above Tail Light Panels - Early Model



### Above Tail Light Panels Paintable Smooth



3L-35-428 Panel - Below Radiator Inlet LH (45959)



3L-35-429 Panel - Below Radiator Inlet RH (45959)

### Above Tail Light Panels Stainless Satin

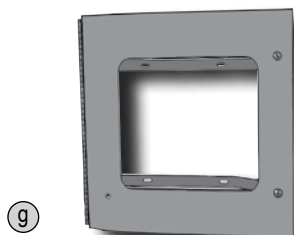


3L-35-732 Panel - Below Radiator Inlet LH [45959]

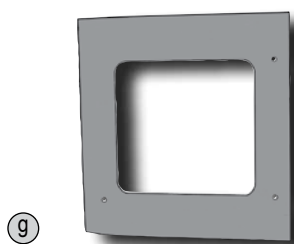


3L-35-733 Panel - Below Radiator Inlet RH [45959]

### LH Tail Light Panels Paintable Smooth

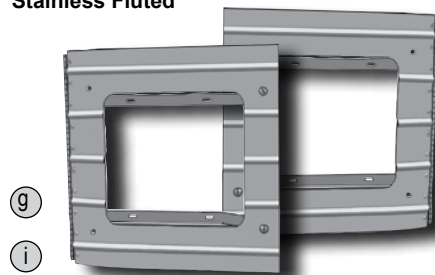


3L-31-80 Panel Assy - Tail Light LH

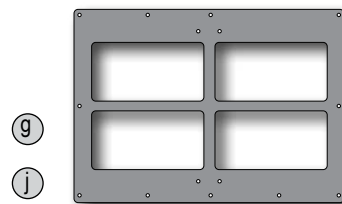


3L-31-79 Panel - Tail Light LH

### LH/RH Tail Light Panel Assembly Stainless Fluted



3K-31-124 Panel Assy - Tail Light LH/RH

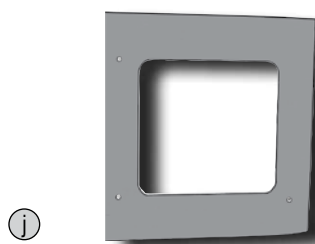


7L-7-10 Panel Assy - Bezel LH/RH

### RH Tail Light Panels Paintable Smooth



3L-31-51 Panel Assy - Tail Light RH



3L-31-52 Panel - Tail Light RH

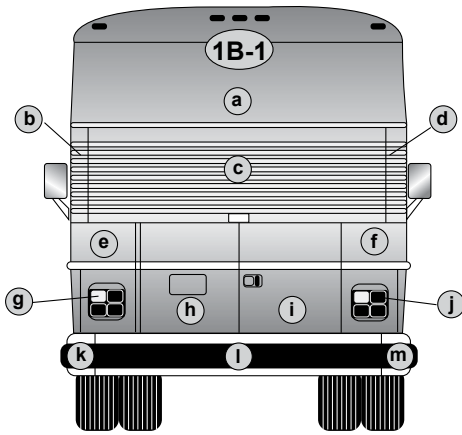
### Tail Light Assembly Components

- 3K-31-17 Bar - Tail Light Mount
- 3L-31-90 Hinge - Mount Tail Light Door Assy
- 19-5-1 Dzus Grommet
- 19-5-7 Dzus Stud
- 19-5-9 Dzus Spring

### Early Model LED Tail Light Conversion



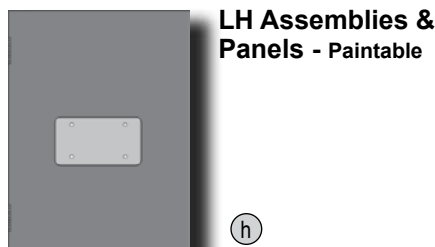
- IBP-102-002 LED Tail Light Kit
- IBP-102-002-1 Black Mounting Plate
- 77182 Red LED Lamp
- 77180 Amber LED Lamp
- 77184 Clear LED Lamp
- 45700 Rubber Grommet
- 98154R Reflector - Red, 1" x 12"



# Location 1B-1

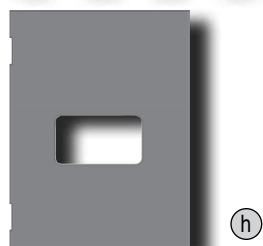
Location 1B-1  
h i

## Rear Engine Doors Paintable Smooth & Stainless Fluted - Early Model (45959)



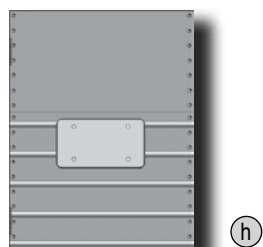
**LH Assemblies & Panels - Paintable**

3L-31-473 Door Assy - Rear Engine LH  
3L-31-477 Frame - Rear Engine Door LH



3L-31-475 Panel - LH Engine Door

### LH Assemblies & Panels (45959)



3L-31-820 Door Assy - Rear Engine Access LH  
3L-31-822 Door Assy - Rear Engine Access LH (No Upper Paint)  
3L-31-487 Frame - Interior Engine Door LH

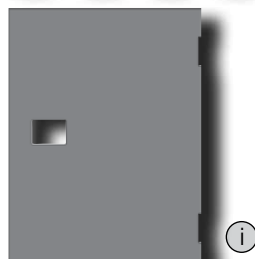


3L-31-485 Panel - Upper, LH Engine Door  
3L-31-824 Panel - Upper, LH Engine Door  
3R-31-257 Panel - Lower, LH Engine Door



**RH Assemblies & Panels - Paintable**

3L-31-472 Door Assy - Engine RH  
3L-31-476 Frame - Interior Engine Door RH

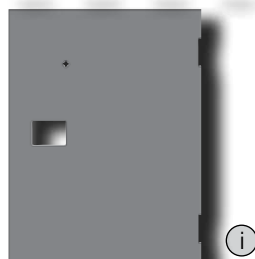


3L-31-474 Panel - Exterior



**RH Assemblies & Panels w/Lock**

3L-31-620 Door Assy - Rear Engine Access RH w/Key Lock (Painted)  
3L-31-476 Frame - Interior Engine Door RH



3L-31-621 Panel - RH Engine Door w/Lock

### Rubber Belt Molding

3L-20-112M End Cap - Belt & Sash Molding  
3L-20-77 Molding - Rubber Belt Rail LH/RH Engine Door  
3L-20-46 Mounting Channel - Belt Rail LH/RH Engine Door

### Aluminum Belt Molding

3L-20-433 Molding - Aluminum Belt Rail LH/RH  
3L-20-46 Mounting Channel - Belt Rail LH/RH  
3L-20-437 Retainer - Aluminum Belt Rail LH/RH

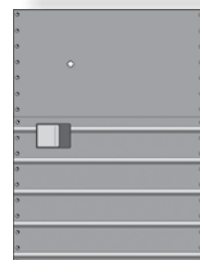


**RH Stainless Assemblies & Panels (45959)**

3L-31-819 Door Assy - Rear Engine Access RH/Stainless  
3L-31-821 Door Assy - Rear Engine Access LH (No Upper Paint)  
3L-31-476 Frame Assembly



3L-31-484 Panel - Upper, RH Engine Door  
3L-31-823 Panel - Upper, LH Engine Door  
3J-31-194 Panel - Lower, RH Engine Door



**RH Stainless Assemblies & Panels w/Lock (45959)**

3L-31-847 Door Assy - Rear Engine Access LH w/Key Lock / Stainless  
3L-31-1021 Door Assy - Rear Engine Access w/Key Lock (No Upper Paint)  
3L-31-476 Frame - Interior Engine Door RH



3L-31-848 Panel - Flat Upper (Painted)  
3L-31-1020 Panel - Upper, LH Engine Door w/Lock  
3J-31-194 Panel - Lower, RH Engine Door

### Rear Engine Door Components

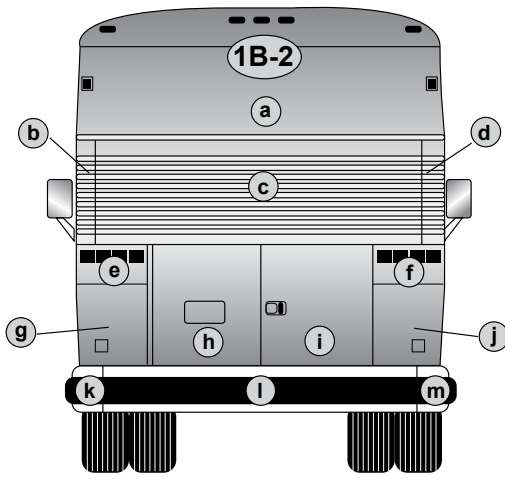
3J-30-18 Door Catch  
3J-30-45 Door Latch  
3L-31-481 Locking Bar - Upper (45959)  
3J-31-197 Locking Bar - Lower

## Location 1B-2

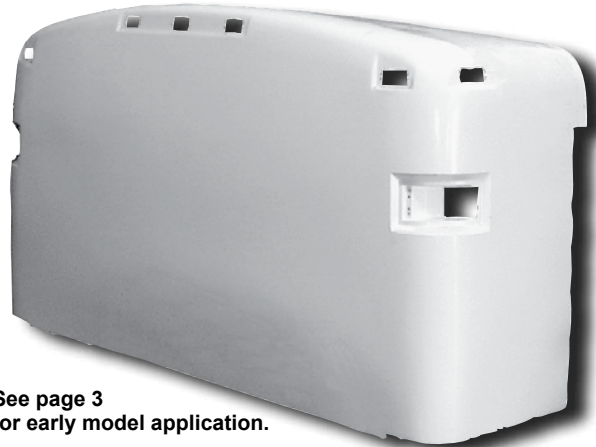
Location 1B-2

(a) (b) (c) (d) (k) (l) (m)

### Rear Fiberglass Panels, Bumpers & Components - Late Model

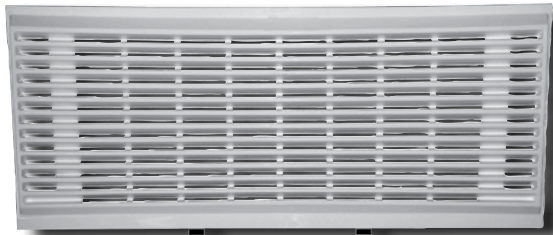


#### Exterior Rear Cap Assembly



See page 3 for early model application.

#### Exterior Louvered Blower Door [45959]



(c) 3L-31-1169  
Door Assy - Blower /  
Fiberglass [45959]

- (a) 3L-35-1285 Cap Assy - Rear Exterior Roof 137"/ Fiberglass [45959]
- (a) 3L-35-1286 Cap Assy - Rear Exterior Roof 140"/ Fiberglass [45959]

#### Exterior Louvered Panels (45959) Painted Fiberglass

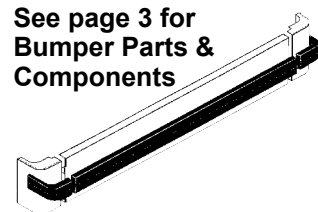


- (b) 3L-35-1666 Radiator Inlet - LH w/ Full Vents / Fiberglass [47071], (1996 prod)
- 3L-35-750 Radiator Inlet - LH Fiberglass
- 3L-35-1174 Seal [45959]



- (d) 3L-35-1583 Radiator Inlet - RH w/Full Vents Fiberglass [47071] (1996 prod)
- 3L-35-751 Radiator Inlet - RH Fiberglass
- 3L-35-1175 Seal [45959]

See page 3 for Bumper Parts & Components



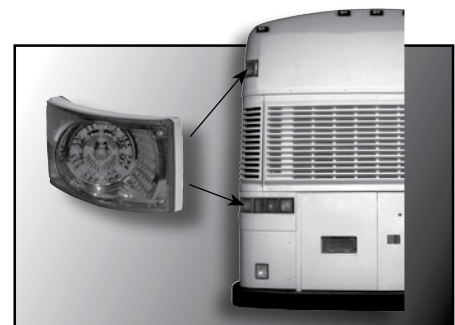
#### LED D4500 Series Upgrade Tail Light Conversion



Each Kit Includes:  
Grommet Mounted  
LED Lights, Wiring,  
Mounting Hardware & Reflectors.

- M1-00660LP ..... D-Model Complete Tail Light Kit
- M1-00591 ..... D-Model Upper Tail Light Kit
- M1-00569 ..... D-Model Lower Tail Light Kit

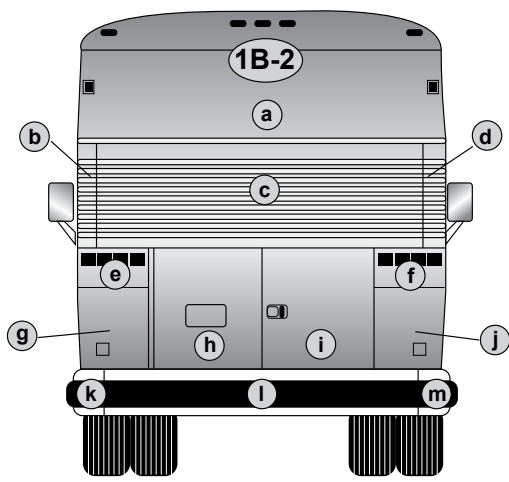
#### LED Banana Tail Lights



- Brighter for Safety
- Reduced Maintenance

7L-7-156LED ..... D-Model Tail Light Kit





### Fiberglass Tail Light Panels



3L-35-1376 Panel - LH Tail Light w/Stop/  
Turn Light / Fiberglass [45959]



3L-35-1374 Panel - LH Tail Light w/Stop/  
Turn Light / Fiberglass [45959]



3L-35-1581 Panel - RH Tail Light w/Stop/  
Turn Light w/Vents [45959]



3L-35-1787 Panel - RH Tail Light w/Stop/Turn  
Light/Vents/ Glad Hand / Fiberglass

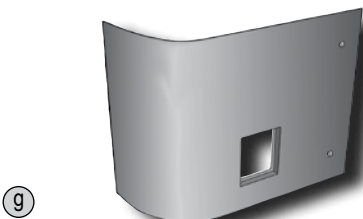
## Location 1B-2

## Location 1B-2

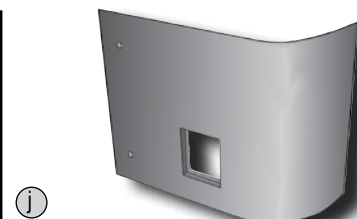
e f g j

### Rear Tail Light Panels, Satellite Tail Light Assemblies & Panels - Late Model

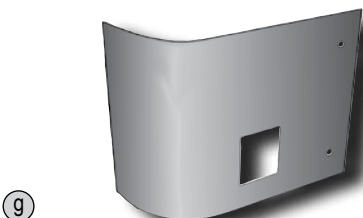
#### Satellite Door Assemblies & Panels - Painted [45959]



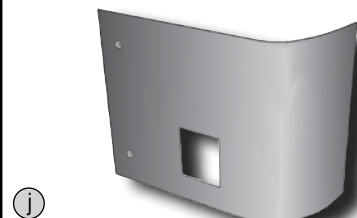
3L-31-1255 Door Assy - LH Satellite



3L-31-1256 Door Assy - RH Satellite

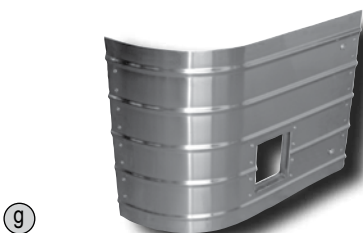


3L-31-1253 Panel - Satellite LH

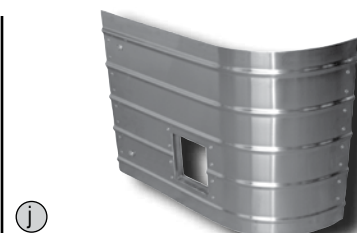


3L-31-1254 Panel - Satellite Door RH

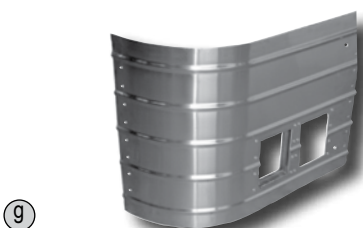
#### Satellite Door Assemblies & Panels - Stainless Fluted [45959]



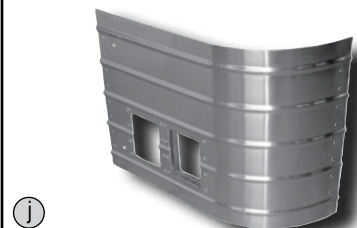
3L-31-1499 Door Assy - Satellite LH  
3L-31-1496 Panel - Satellite Door LH



3L-31-1500 Door Assy - Satellite RH  
3L-31-1497 Panel - Satellite Door RH



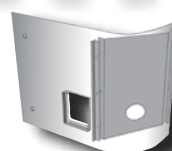
3L-31-2238 Door Assy - Satellite LH  
w/Cut-Outs  
3L-31-2244 Panel - Access Door RH



3L-31-2239 Door Assy - Satellite RH  
w/Cut-Outs  
3L-31-2247 Panel - Access Door RH



3L-31-1194  
Bracket - Door  
Support LH



3L-31-1250  
Bracket - Door  
Support RH

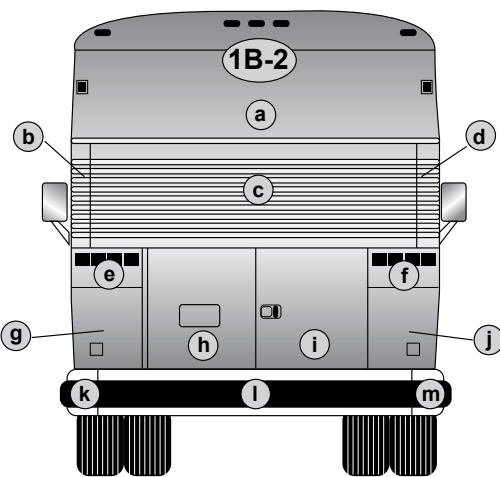
#### Satellite Door Components

- 3L-31-1168 Frame - LH/RH
- 3L-31-1453 Angle - Support Mount LH
- 3L-31-1454 Angle - Support Mount RH
- 3L-31-1196 Pin Locating Plate Assy
- 19-5-1 Dzus Grommet
- 19-5-7 Dzus Stud
- 19-5-9 Dzus Spring

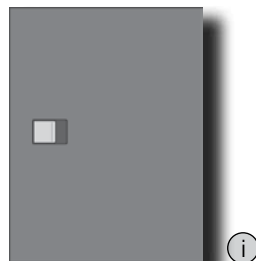
# Location 1B-2

Location 1B-2  
h i

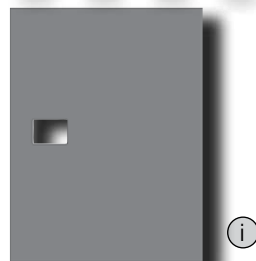
## Rear Engine Doors Paintable Smooth - Late Model [45959]



### RH Assemblies & Panels [45959]

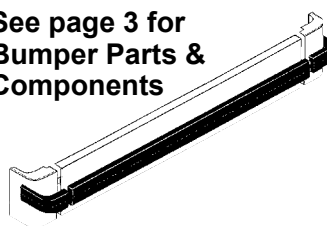


- 3L-31-1152 Door Assembly  
3L-31-1154 Frame Assy - Rear Motor Access Door RH

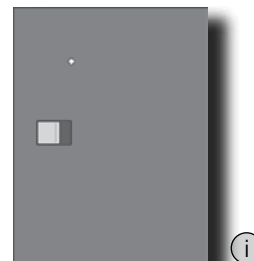


- 3L-31-1159 Panel - Exterior Door RH

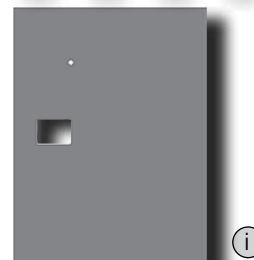
**See page 3 for  
Bumper Parts &  
Components**



### RH Assemblies & Panels w/Lock [45959]



- 3L-31-1346 Door Assy - Motor Access RH  
w/Key Lock / Painted  
3L-31-1154 Frame Assy - Rear Motor Access Door RH

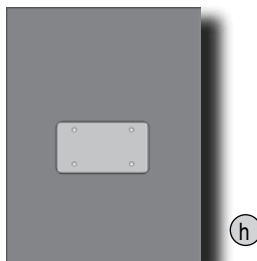


- 3L-31-1345 Panel - Exterior Door RH w/Key Lock

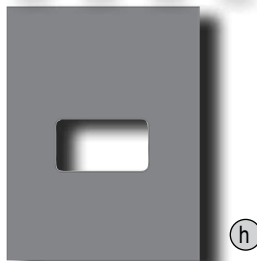
### Rear Engine Door Components

- 3J-30-18 Door Catch  
3J-30-45 Door Latch  
3L-31-1164 Bar - Locking Upper [45959]  
3J-31-197 Bar - Locking Lower  
3L-31-1356 Lock Body Assy - Lock Bar Mechanism

### LH Assemblies & Panels [45959]

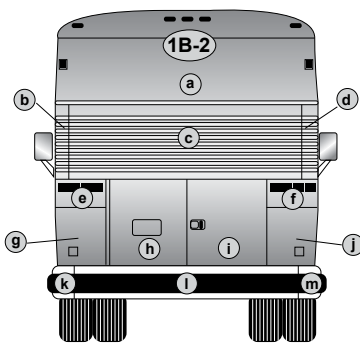


- 3L-31-1151 Door Assy - Rear Motor Access LH / Painted  
3L-31-1153 Frame Assy - Rear Motor Access Door LH



- 3L-31-1158 Panel - Exterior Door LH

### NOTES:



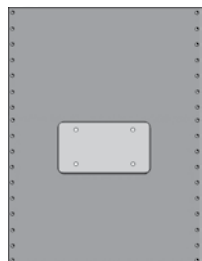
## Location 1B-2

Location 1B-2



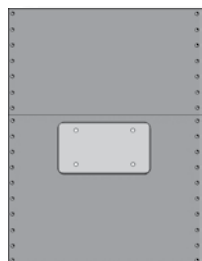
### Rear Engine Doors Stainless Flat & Fluted Panels - Late Model [45959]

#### LH Assemblies & Panels [45959]



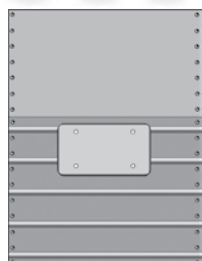
**h LH Flat (Satin)**

3L-31-1292 Door Assy - Rear Engine Access  
3L-31-1153 Frame Assy - Rear Motor Access  
3L-31-1289 Panel - Flat Full Length Exterior



**h LH Flat (Satin)  
w/Painted Upper  
[45959]**

3L-31-1291 Door Assy - Rear Engine Access  
[45959]  
3L-31-1153 Frame Assy - Rear Motor Access  
3L-31-1286 Panel - Flat Upper Exterior Engine  
3L-31-1287 Panel - Flat Lower Exterior Engine

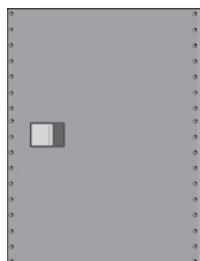


**h LH Fluted &  
h LH Fluted  
w/Painted Upper  
[45959]**

Stainless Fluted w/o Painted Upper  
3L-31-1492 Door Assy  
3L-31-1292 Door S/A  
3L-31-1153 Frame Assy  
3L-31-1289 Panel - Flat Full Length (Satin)  
3L-31-1494 Panel - Fluted Lower

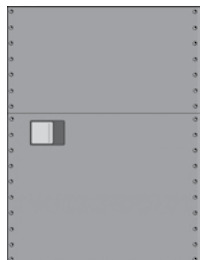
Stainless Fluted w/Painted Upper  
3L-31-1601 Door Assy  
3L-31-1583 Door S/A  
3L-31-1153 Frame Assy Interior  
3L-31-1287 Panel - Flat Lower  
3L-31-1586 Panel - Flat Upper (Painted)  
3L-31-1494 Panel Fluted Lower

#### RH Assemblies & Panels [45959]



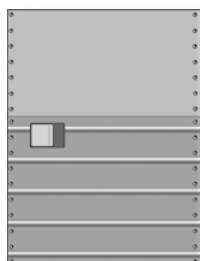
**i RH Flat (Satin)**

3L-31-1295 Door Assy - Rear Engine Access  
3L-31-1154 Frame Assy - Rear Motor Access  
3L-31-1288 Panel - RH Rear Engine Full Length



**i RH Flat (Satin)  
w/Painted Upper  
[45959]**

3L-31-1294 Door Assy - Rear Engine Access  
3L-31-1154 Frame Assy - Rear Motor Access  
3L-31-1284 Panel - Flat Upper Exterior (Painted)  
3L-31-1285 Panel - Flat Lower Exterior (Satin)



**i RH Fluted &  
i RH Fluted  
w/Painted Upper  
[45959]**

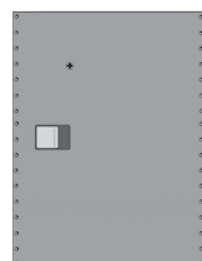
Stainless Fluted w/o Painted Upper  
3L-31-1493 Door Assy  
3L-31-1295 Door S/A Rear Engine Access  
3L-31-1154 Frame Assy Interior  
3L-31-1288 Panel - Flat Full Length (Satin)  
3L-31-1495 Panel - Fluted Lower

Stainless Fluted w/Painted Upper  
3L-31-1602 Door Assy - Rear Engine Access  
3L-31-1584 Door Assy - Rear Motor Access  
3L-31-1154 Frame Assy - Rear Motor Access  
3L-31-1587 Panel - Flat Upper (Painted)  
3L-31-1285 Panel - Flat Lower

#### Rear Engine Door Components

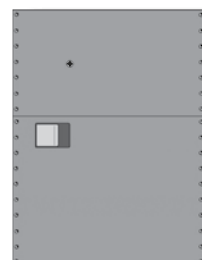
3J-30-18 Door Catch  
3J-30-45 Door Latch  
3L-31-1164 Locking Bar - Upper [45959]  
3J-31-197 Locking Bar - Lower  
3L-31-1356 Lock Body Assy - Lock Bar  
Mechanism

#### RH Assemblies & Panels w/Lock [45959]



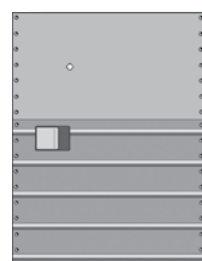
**i RH Flat (Satin)  
w/Lock**

3L-31-1348 Door Assy - Rear Engine Access  
3L-31-1154 Frame Assy - Rear Motor Access  
3L-31-1344 Panel - Flat Full Length w/Lock



**i RH Flat (Satin)  
w/Painted Upper  
w/Lock [45959]**

3L-31-1347 Door Assy - Rear Engine Access  
3L-31-1154 Frame Assy - Rear Motor Access  
3L-31-1343 Panel - Flat Upper w/Lock (Painted)  
3L-31-1285 Panel - Flat Lower (Satin)



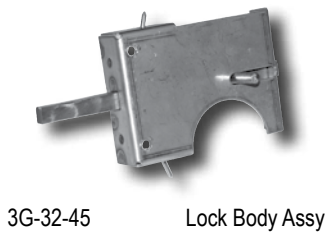
**i RH Fluted  
w/Lock  
[45959]**

3L-31-1603 Door Assy - Rear Engine Access  
3L-31-1585 Door Assy - Rear Engine Access  
3L-31-1154 Frame Assy - Rear Motor Access  
3L-31-1604 Panel - Flat Upper w/Lock  
3L-31-1285 Panel - Flat Lower  
3L-31-1495 Panel - Fluted Lower

#### NOTES:



3L-29-1110 Housing - Wheelchair Lift Curb Light



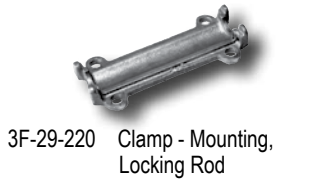
3G-32-45 Lock Body Assy



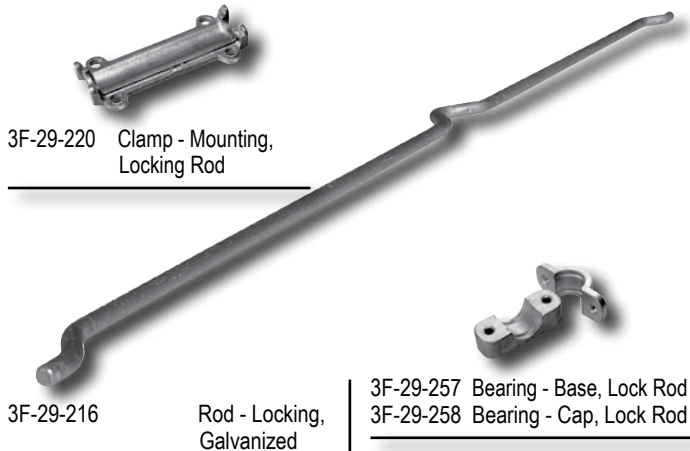
3L-29-35 Handle Bucket  
3L-29-70 Handle Only  
3L-29-71 Handle Assy-Locking Style  
3M-29-90 Rod - Mounting, Bag Door Handle



3F-29-107 Bracket - Lower Door Lock LH  
3F-29-108 Bracket - Lower Door Lock RH



3F-29-220 Clamp - Mounting, Locking Rod



3F-29-216 Rod - Locking, Galvanized



3F-29-187 Bearing - Base, Swing Tube  
3F-29-186 Bearing - Cap, Swing Tube



3F-29-257 Bearing - Base, Lock Rod  
3F-29-258 Bearing - Cap, Lock Rod



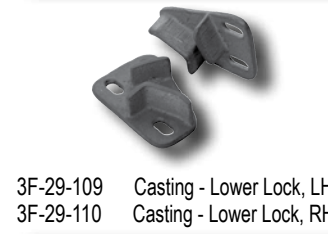
3M-29-108 Eye Bolt  
19-7-48 Yoke - Handle Attaching



3C-29-178 Hinge Bracket



3F-29-221 Stop - Locking Rod, Baggage Door



3F-29-109 Casting - Lower Lock, LH  
3F-29-110 Casting - Lower Lock, RH

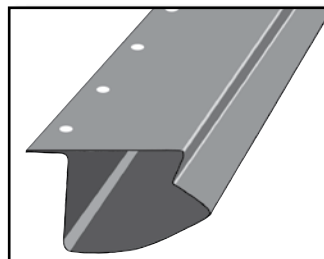


3F-29-219 Bumper - Baggage Door Assy

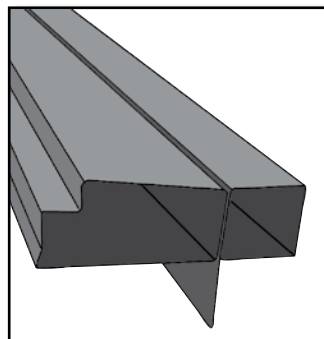


3L-29-30 Panel - Inner, Baggage Door

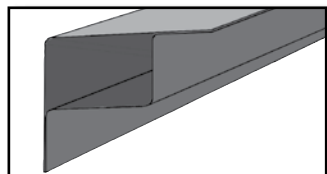
## Frame Repair Sections



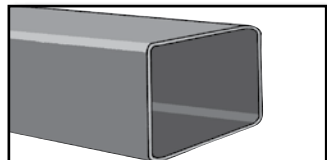
3L-59-59X Skirt Rail 102C-102D (5 ft. Repair Section)



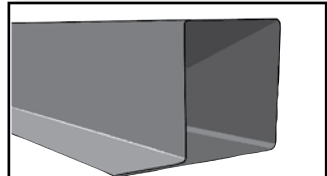
3L-59-583 Post Assy - Front Truss RH (5 ft. Repair Section)



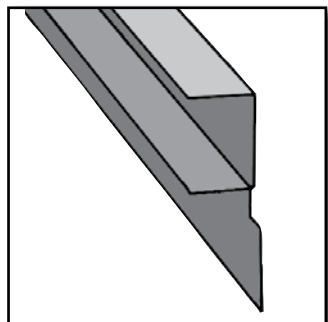
3L-59-63X Plain Floor Frame (5 ft. Repair Section)



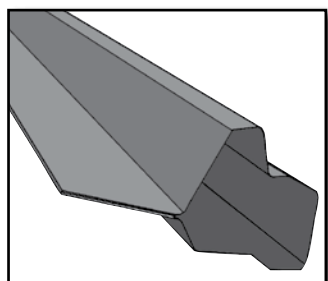
3L-59-738 Tube, Diagonal Rear Bulkhead to Rear Post LH/RH (5 ft. Repair Section)



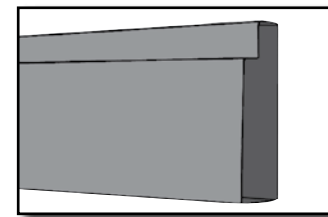
3L-76-30X Below Side Windows (5 ft. Repair Section)



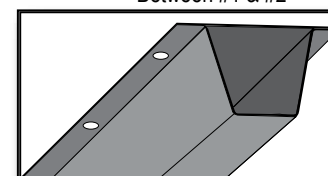
3R-59-108 Channel - Above Battery Door



3L-59-699 Post - Rear of Battery Door



3L-59-576 Post - Rr. of Baggage Compartment #3 LH  
3L-59-577 Post - Rr. of Baggage Compartment #3 RH  
3L-59-578 Post - Rr. Section RH & LH  
3L-59-698 Post - Front of Battery Door  
3L-59-728 Baggage Door Jam LH/RH  
3L-59-2464 Post - Baggage Between #1 & #2

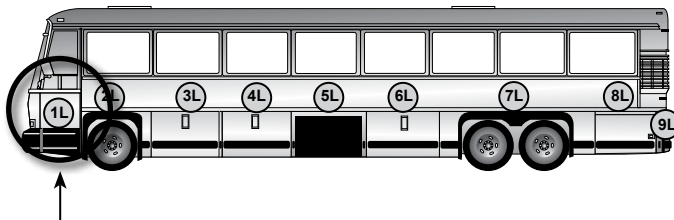


3L-59-592 Rail - Skid Under Baggage Floor (61.875" Repair Section)

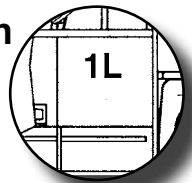


## Location 1L

### Front Junction Box & Side Service Doors

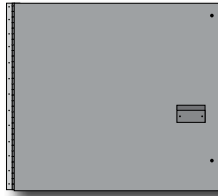


Location



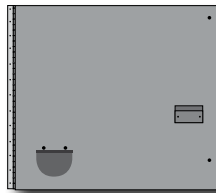
#### Junction Box Access Doors & Panels - Paintable Smooth

3L-31-754	Door Assy - Front Junction Box Access w/Key Lock
3L-31-756	Door Assy - Front Junction Box Access
3L-31-710	Panel - Exterior
3L-31-712	Panel - Exterior, Front Junction Box Door w/Lock
3L-31-716	Panel - Interior, Front Junction Box Door w/Lock
3L-31-717	Door - Interior
3L-32-43	Recessed Grip - Door, Exterior (Rubber)
19-5-7	Dzus Stud, Latch Door To Frame
19-5-5	Dzus Grommet, Finish Dzus Stud Hole
19-5-9	Dzus Spring, Latching



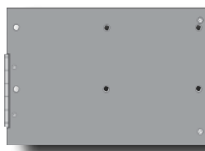
#### Front Junction Box Door & Panels with In-Station Lights

3L-31-748	Door Assy - Front JBox Painted, No Key
3L-31-750	Door Assy - Front Junction Box w/One Receptacle - Key Lock
3L-31-737	Panel Assy - Exterior, Jbox Door w/One Receptacle
3L-31-718	Panel - Door Interior w/One Receptacle
7R-8-128	Socket
3L-31-739	Panel Assy - JBox w/Two Receptacle Cut-Outs
3L-31-741	Panel Assy - JBox w/One Receptacle & Lock Cut-Out
3L-31-743	Panel Assy - JBox w/Two Receptacle & Lock Cut-Outs

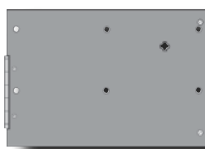


#### Front Side Service Door Assemblies - Paintable Smooth

3L-31-41	Door S/A - Front Side Service (50129)
3L-31-43	Frame S/A - Front Side Service Welded
3G-31-27	Hinge - Front Edge of Door
3L-31-44	Panel - Exterior, Door / Alum

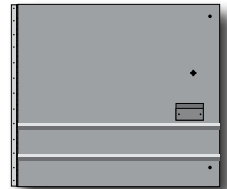


3L-31-207	Door Assy - Front Side Service (Less Lock Tumbler) [50129]
3L-31-47	Door S/A - Front Side Service (Less Rub Rail)
3L-31-48	Door S/A - Front Side Service Welded w/Paint
3G-31-27	Hinge - Front Edge of Door
3L-31-50	Panel - Exterior Service Door



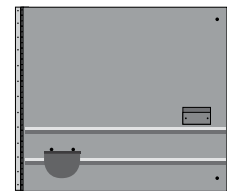
#### Junction Box Access Doors & Panels - Stainless Fluted

3L-31-757	Door Assy - Front JBox
3L-31-755	Door Assy - Front Junction Box
3L-31-709	Panel - Front Exterior JBox Door



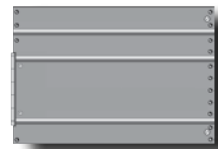
#### Front Junction Box Door & Panels with In-Station Lights

3L-31-749	Door Assy - Front JBox w/One Receptacle Cover
3L-31-751	Door Assy - Front JBox w/One Receptacle Cover & Key Lock
3L-31-738	Panel Assy - JBox Door Exterior w/One Receptacle Cut-Out / Stainless
3L-31-740	Panel Assy - JBox Door Exterior w/Two Receptacle Cut-Outs / Stainless
3L-31-742	Panel Assy - JBox Door Exterior w/One Receptacle Cut-Outs / Stainless
3L-31-744	Panel Assy - JBox Door Exterior w/Two Receptacles & Lock Cut-Outs / Stainless

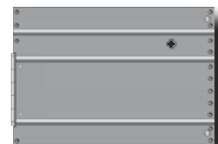


#### Front Side Service Door Assemblies - Stainless Fluted

3L-31-548	Door Assy - Front Side Service w/o Bumper Extension (50129)
3J-31-258	Door S/A - (Less Rub Rail)
3J-31-259	Frame S/A - Welded
3G-31-27	Hinge - Front Edge of Door
3J-31-263	Panel - Front Side Service



3L-31-549	Door Assy - Front Side Service w/o Bumper Extension [50129]
3J-31-264	Door S/A (Less Tumbler Lock)
3J-31-265	Door S/A (Less Rub Rail)
3J-31-266	Frame S/A - Welded
3G-31-27	Hinge - Front Edge of Door
3J-31-267	Panel - Exterior Skin w/Key Lock

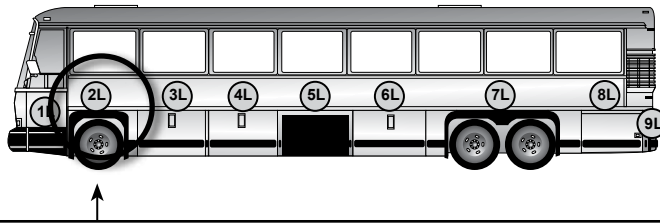


3L-31-223	Bracket S/A - Front Side Service Door
3L-31-224	Bracket Only
19-5-9	Spring - Dzus (.225)
SSD46SSBS	Rivet

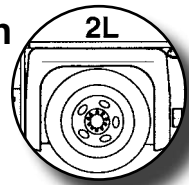


## Location 2L

### Front Wheelhousing Panels



Location



#### Panels - Paintable Smooth



3L-35-4 Panel - Above Front Whlhsg



3L-35-2 Panel - Front of LH Front Whlhsg



3L-35-600 Panel - Rear of LH Front Whlhsg

#### Panels - Stainless Fluted



3J-35-66 Panel - Above Front Whlhsg

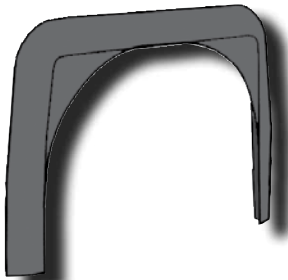


3J-35-56 Panel - Front of LH Front Whlhsg



3L-35-616 Panel S/A - Rear of LH Front Whlhsg

#### Front Fender



3L-23-57-0001 Fender - Front / Fiberglass

#### 5" Rub Rail



3L-20-332  
Rub Rail Assy - Rubber, Rear of  
Front Whlhsg

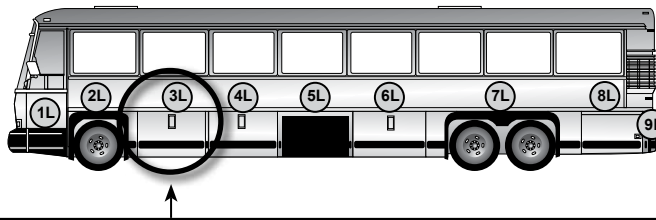
#### 2.5" Rub Rail



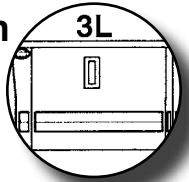
3L-20-348  
Rail Cap - Rear of Front Whlhsg

# Location 3L

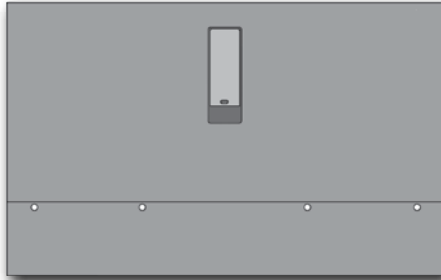
## Baggage Doors & Adjacent Body Panels



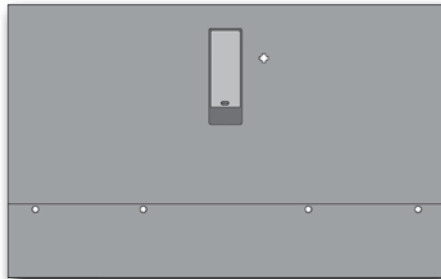
Location



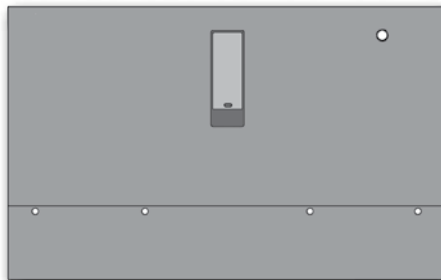
### Baggage Doors - Paintable Smooth



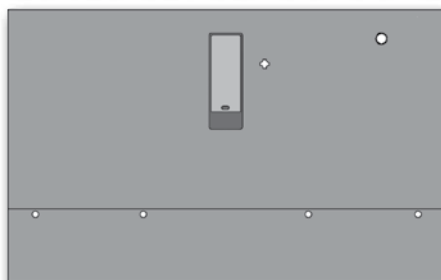
- 3L-29-55 Door Assy - w/Rub Rail (50129)
- 3L-29-761 Door Assy - [50129]
- 3L-29-32 Panel - Exterior Upper
- 3L-29-31 Panel - Exterior Lower



- 3L-29-69 Door Assy - Large Bay #1 or #3 w/Key Lock
- 3L-29-68 Panel - Upper Door w/Lock
- 3L-29-31 Panel - Exterior Lower

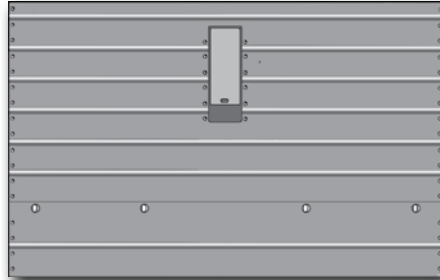


- 3L-29-372 Door Assy - Bay#1 LH w/Dock Light
- 3L-29-89 Panel - Upper Exterior LH w/Dock Light
- 3L-29-31 Panel - Exterior Lower

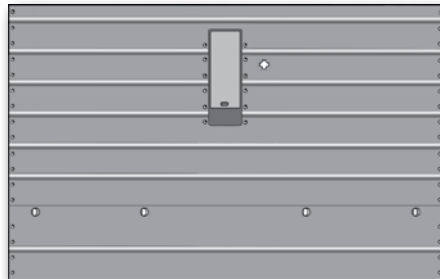


- 3L-29-374 Door Assy - Bay #1 LH w/Dock Light & Key Lock
- 3L-29-211 Panel - Upper Exterior LH w/dock Light Turn Lamp Cut-Outs
- 3L-29-31 Panel - Exterior Lower

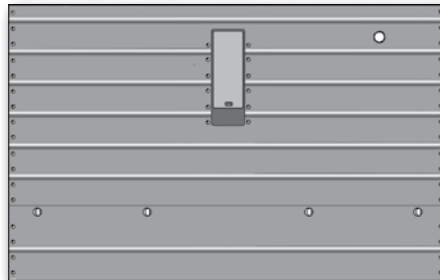
### Baggage Doors - Stainless Fluted



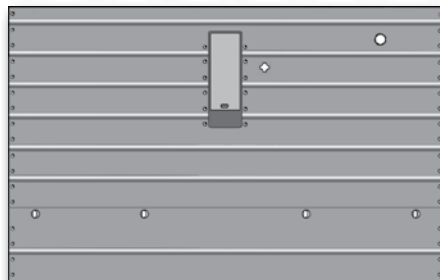
- 3L-29-73 Door Assy - Large Bay #1 or #3 (50129)
- 3L-29-766 Door Assy - [50129]
- 3L-29-74 Panel - Exterior Upper
- 3L-29-75 Panel - Exterior Lower



- 3L-29-81 Door Assy - Large Bay #1 or #3 w/Key Lock
- 3L-29-82 Panel - Upper w/Key Lock
- 3L-29-75 Panel - Exterior Lower



- 3L-29-376 Door Assy - #1 LH w/Dock Light
- 3L-29-382 Panel - Exterior Upper LH w/Dock Light Cut-Outs
- 3L-29-75 Panel - Exterior Lower



- 3L-29-378 Door Assy - #1 LH w/Dock Light & Key Lock
- 3L-29-140 Panel - Exterior Upper LH w/Dock Light & Lock Cut-Outs
- 3L-29-75 Panel - Exterior Lower

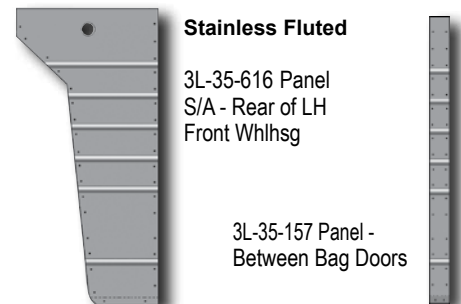
### Adjacent Body Panels & Rub Rails



#### Paintable Smooth

3L-35-600 Panel - Rear of LH Front Whlsg

3L-35-8 Panel - Between Baggage and Rear of Battery



#### Stainless Fluted

3L-35-616 Panel S/A - Rear of LH Front Whlsg

3L-35-157 Panel - Between Bag Doors

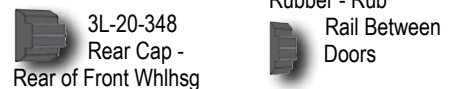
### 5" Rub Rail



3L-20-332 Rear of Front Whlsg

3G-20-109 Between Bag Doors

### 2.5" Rub Rail



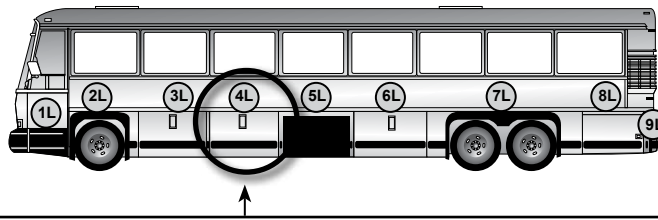
3L-20-348 Rear Cap - Rear of Front Whlsg

3L-20-53 Rubber - Rub Rail Between Doors

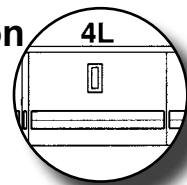
### NOTES:

## Location 4L

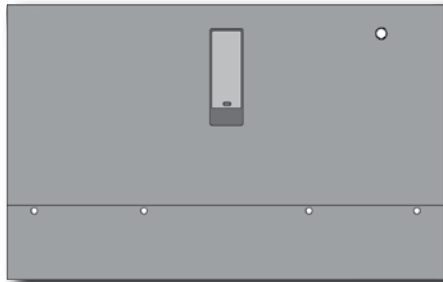
### Baggage Doors & Adjacent Body Panels



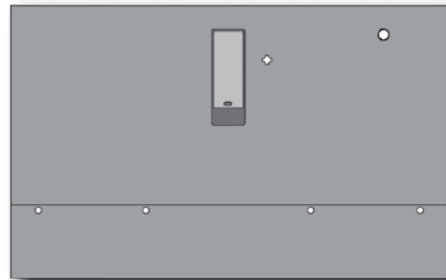
## Location 4L



#### Baggage Doors - Paintable Smooth



- 3L-29-147 Door Assy - Bay #2 LH w/Turn Lamp (50129)
- 3L-29-763 Door Assy - Bay #2 w/Turn Lamp [50129]
- 3L-29-149 Panel - Exterior Upper
- 3L-29-31 Panel - Exterior Lower

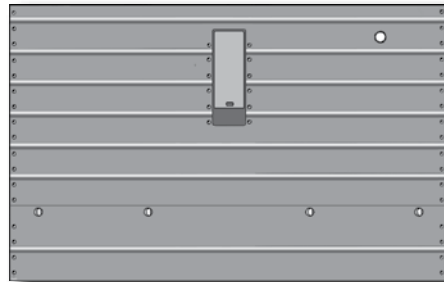


- 3L-29-221 Door Assy - w/Key Lock & Turn Lamp
- 3L-29-211 Panel - Upper Exterior w/Key Lock & Turn Lamp Cut-Outs
- 3L-29-31 Panel - Exterior Lower

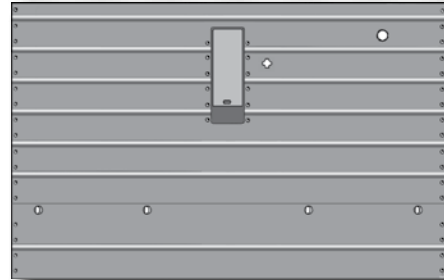
#### Bag Door Components

- 3F-29-107 Bracket - Latch, Casting, LH, Lower Door Lock
- 3F-29-108 Bracket - Latch, Casting, RH, Lower Door Lock
- 3F-29-186 Bearing - Cap, Swing Tube
- 3F-29-187 Bearing - Base, Swing Tube
- 3F-29-216 Rod - Locking, Galvanized
- 3F-29-219 Bumper - Baggage Door Assy
- 3F-29-220 Clamp - Mounting, Lock Rod
- 3F-29-221 Stop - Locking Rod, Baggage Door
- 3F-29-257 Bearing - Base, Lock Rod
- 3F-29-258 Bearing - Cap, Lock Rod
- 3L-29-21 Seal - Baggage Door
- 3L-29-30 Panel - Inner, Baggage Door
- 3L-29-61 Pocket Assy - Complete
- 3L-29-70 Handle Only - Baggage Door
- 3L-29-71 Handle Assy - Baggage Door Complete
- 3L-29-1167 Frame - Baggage Door, Painted
- 3M-29-108 Eye Bolt

#### Baggage Doors - Stainless Fluted



- 3L-29-132 Door Assy - Bay #2 LH Less Cylinder w/Turn Lamp (50129)
- 3L-29-768 Door Assy - Bay #2 LH Less Cylinder w/Turn Lamp [50129]
- 3L-29-130 Panel - Exterior Upper w/Turn Lamp Cut-Outs
- 3L-29-75 Panel - Lower, Baggage Door



- 3L-29-117 Door Assy - Bay #2 w/Key Lock & Turn Lamp
- 3L-29-116 Panel - Upper Exterior RH w/Lock & Turn Lamp Cut-Outs
- 3L-29-75 Panel - Lower, Baggage Door

#### 5" Rubber Rub Rail Components



- 3L-29-56 Rub Rail Assy - Rubber
- 3L-29-59 Rubber - Rub Rail
- 3L-29-58 Mounting Channel - Rub Rail
- 3G-20-10 End Cap - Rubber Rub Rail
- 3G-29-18 End Cap - Mounting Plate
- 3R-20-14 Washer - Nylon
- 3J-33-50 Bolt - Mount Extrusion to Doors

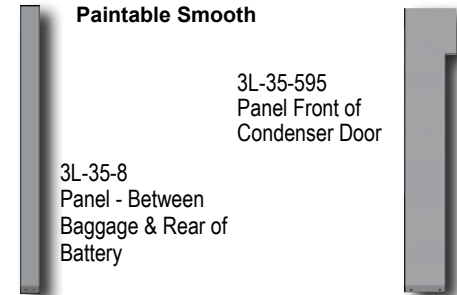
#### 2.5" Rubber Rub Rail Components



- 3L-29-63 Rubber - Rub Rail
- 3L-29-65 Mounting Channel - Rub Rail
- 3L-29-128M End Cap - Rub Rail
- 3R-20-14 Washer - Nylon
- 3J-33-50 Bolt - Mount Extrusion to Doors

#### Adjacent Body Panels & Rub Rails

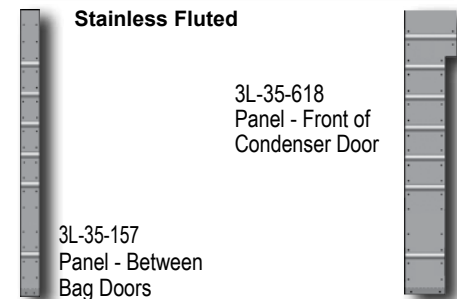
##### Paintable Smooth



3L-35-595  
Panel Front of  
Condenser Door

3L-35-8  
Panel - Between  
Baggage & Rear of  
Battery

##### Stainless Fluted



3L-35-618  
Panel - Front of  
Condenser Door

3L-35-157  
Panel - Between  
Bag Doors

##### 5" Rub Rail

3G-20-109  
Between  
Bag Doors

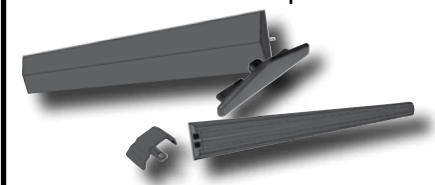
3L-20-281  
Rub Rail Assy -  
Rubber, Front of  
Condenser Door

##### 2.5" Rub Rail

3L-20-53  
Rubber - Rub Rail  
Between Doors

3L-20-311  
Front of  
Condenser Dr.

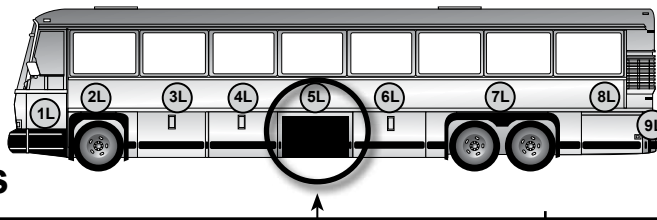
See page 31-32 for all Rub Rail Assemblies & Components.



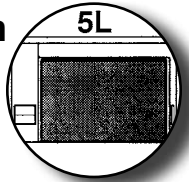


# Location 5L

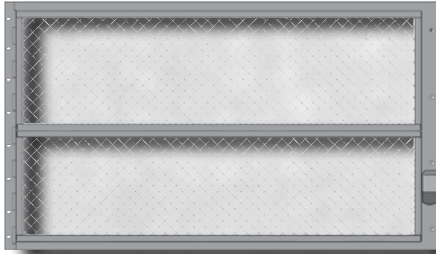
## Condenser Door & Adjacent Body Panels



Location

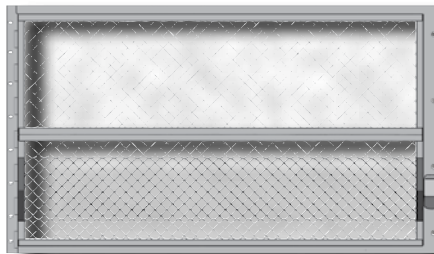


### Door Assembly - Paintable



- 3L-31-5 Door Assy - Condenser
- 3L-31-6 Screen S/A - Lower
- 3L-31-7 Screen S/A - Upper
- 3L-31-8 Handle S/A - Condenser Door

### Formed Rub Rail in Screen Door Assembly - Paintable



- 3L-31-111 Assembly - Painted w/5" Rub Rail
- 3L-31-452 Door Assy - Condenser w/5" Rub Rail (Non- Painted)
- 3L-31-7 Screen S/A - Upper
- 3J-31-155 Screen & Frame S/A - Upper (Non Painted)
- 3J-31-289 Screen & Frame S/A - Lower (Formed Rub Rail)

### Adjacent Body Panels & Rub Rails

#### Above Condenser Panel Paintable Smooth



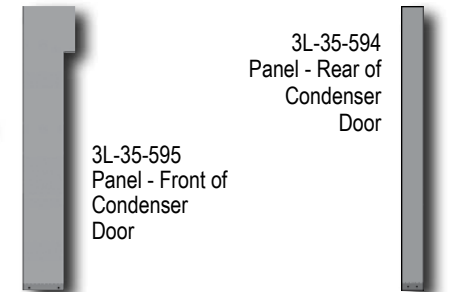
- 3L-35-19 Panel - Above Condenser Door

#### Above Condenser Panel Stainless Fluted



- 3L-35-621 Panel - Above Condenser Door

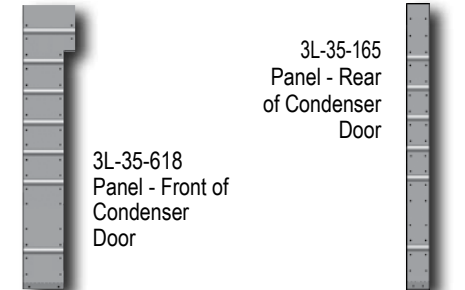
#### Paintable Smooth



- 3L-35-594 Panel - Rear of Condenser Door

- 3L-35-595 Panel - Front of Condenser Door

#### Stainless Fluted



- 3L-35-165 Panel - Rear of Condenser Door

- 3L-35-618 Panel - Front of Condenser Door

#### 5" Rub Rail

- 3G-20-108 Rub Rail - Rubber, Rear of Fuel Door
- 3L-20-281 Rub Rail Assy - Rubber, Front of Condenser Door

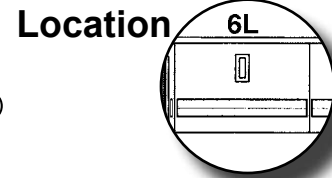
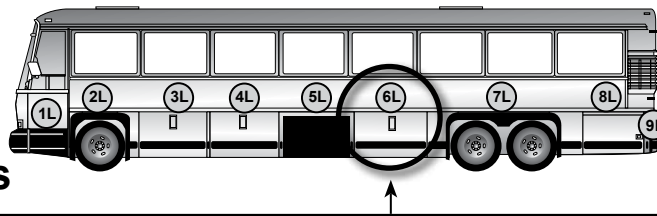
#### 2.5" Rub Rail

- 3L-20-53 Rubber - Rub Rail Between Doors
- 3L-20-311 Rub Rail - Cap, Front of Condenser Door

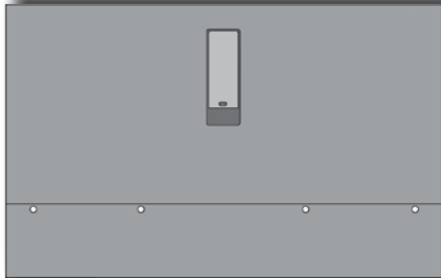
### NOTES:

## Location 6L

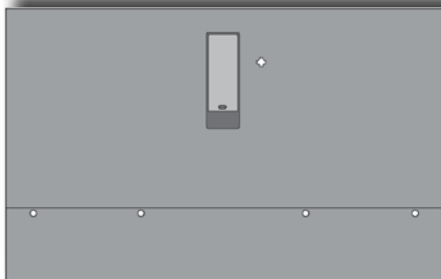
### Baggage Doors & Adjacent Body Panels



#### Baggage Doors - Paintable Smooth



- 3L-29-55 Door Assy - w/Rubber Rub Rail
- 3L-29-761 Door Assy
- 3L-29-32 Panel - Exterior Upper
- 3L-29-31 Panel - Exterior Lower

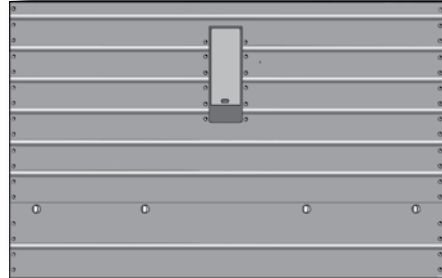


- 3L-29-69 Door Assy - Bay #1 or #3 w/Key Lock
- 3L-29-68 Panel - Exterior Upper
- 3L-29-31 Panel - Exterior Lower

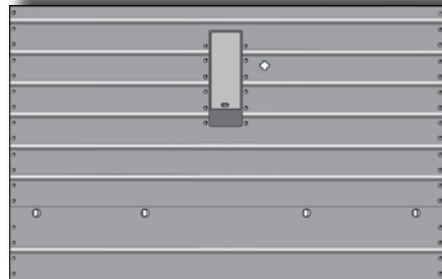
#### Bag Door Components

- 3F-29-107 Bracket - Latch, Casting, LH, Lower Door Lock
- 3F-29-108 Bracket - Latch, Casting, RH, Lower Door Lock
- 3F-29-186 Bearing - Cap, Swing Tube
- 3F-29-187 Bearing - Base, Swing Tube
- 3F-29-216 Rod - Locking, Galvanized
- 3F-29-219 Bumper - Baggage Door Assy
- 3F-29-220 Clamp - Mounting, Lock Rod
- 3F-29-221 Stop - Locking Rod, Baggage Door
- 3F-29-257 Bearing - Base, Lock Rod
- 3F-29-258 Bearing - Cap, Lock Rod
- 3L-29-21 Seal - Baggage Door
- 3L-29-30 Panel - Inner, Baggage Door
- 3L-29-61 Pocket Assy - Complete
- 3L-29-70 Handle Only - Baggage Door
- 3L-29-71 Handle Assy - Baggage Door Complete
- 3L-29-1167 Frame - Baggage Door, Painted
- 3M-29-108 Eye Bolt

#### Baggage Doors - Stainless Fluted

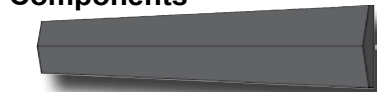


- 3L-29-73 Door Assy - Bay #1 or #3
- 3L-29-766 Door Assy
- 3L-29-74 Panel - Exterior Upper
- 3L-29-75 Panel - Exterior Lower



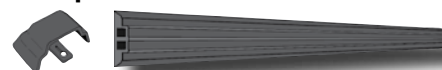
- 3L-29-81 Door Assy - Bay #1 or #3 w/Key Lock
- 3L-29-82 Panel - Exterior Upper w/Lock
- 3L-29-75 Panel - Exterior Lower

#### 5" Rubber Rub Rail Components



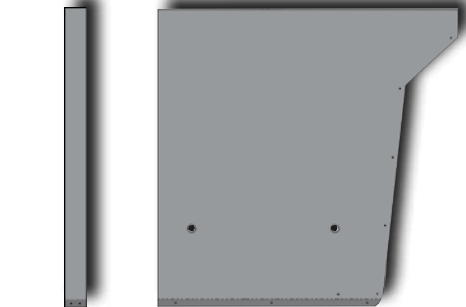
- 3L-29-56 Rub Rail Assy - Rubber
- 3L-29-59 Rubber - Rub Rail
- 3L-29-58 Mounting Channel - Rub Rail
- 3G-20-10 End Cap - Rubber Rub Rail
- 3G-29-18 End Cap - Mounting Plate
- 3R-20-14 Washer - Nylon
- 3J-33-50 Bolt - Mount Extrusion to Doors

#### 2.5" Rubber Rub Rail Components



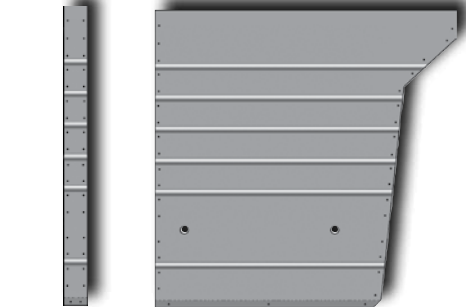
- 3L-29-63 Rubber - Rub Rail
- 3L-29-65 Mounting Channel - Rub Rail
- 3L-29-128M End Cap - Rub Rail
- 3R-20-14 Washer - Nylon
- 3J-33-50 Bolt - Mount Extrusions to Door

#### Adjacent Body Panels & Rub Rails Paintable Smooth



- 3L-35-594 Panel - Rear of Condenser Door
- 3L-35-598 Panel - Front of LH Rear Whlshg

#### Stainless Fluted



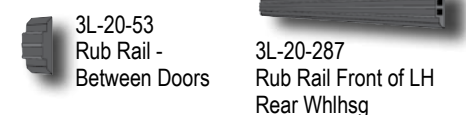
- 3L-35-165 Panel - Rear of Condenser Door
- 3L-35-609 Panel - Front of LH Rear Whlshg

#### 5" Rub Rail



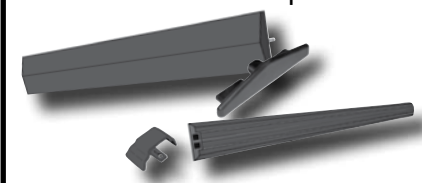
- 3G-20-108 Rear of Fuel Door
- 3L-20-283 Rub Rail Assy - Front of LH Rear Whlshg

#### 2.5" Rub Rail



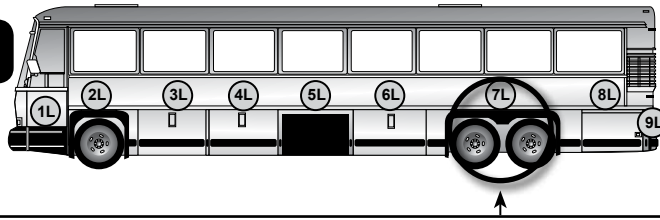
- 3L-20-53 Rub Rail - Between Doors
- 3L-20-287 Rub Rail Front of LH Rear Whlshg

See page 31-32 for all Rub Rail Assemblies & Components.

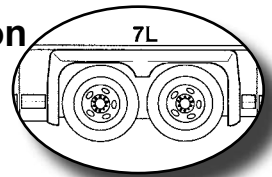


# Location 7L

## Rear Wheelhousing Panels



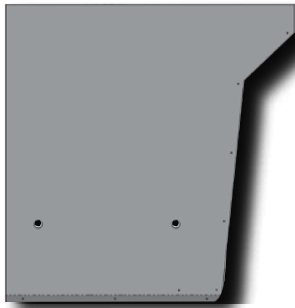
Location



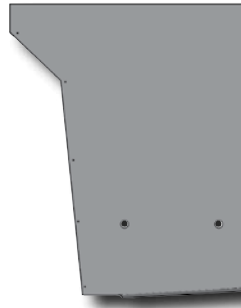
### Panels - Paintable Smooth



3L-35-651 Angle - Finishing Above Rear Whlsg

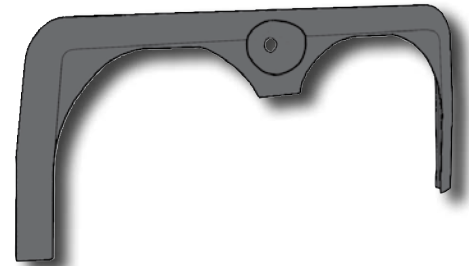


3L-35-598 Panel - Front of LH Rear Whlsg



3L-35-597 Panel - Rear of LH Rear Whlsg  
(45959)  
3L-35-1288 Panel - Rear of LH Rear Whlsg  
[45959]

### Rear Fender



3L-23-58-0001 Fender - Rear / Fiberglass

### NOTES:

### Panels - Stainless Fluted



3L-35-651 Angle - Finishing Above Rear Whlsg



3L-35-609 Panel - Front of LH Rear Whlsg



3L-35-607 Panel - Rear of LH Rear Whlsg

### 5" Rub Rail Assembly



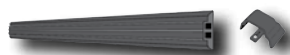
3L-20-283  
Front of Rear Whlsg

### 5" Rub Rail Assembly



3L-20-284  
Rear of Rear Whlsg

### 2.5" Rub Rail & Components



3L-20-287 Rubber  
3L-20-302 Mounting Channel  
3L-29-128M End Cap - Rub Rail  
3R-20-14 Washer, Nylon  
3J-33-50 Bolt - Mount Extrusions to Doors

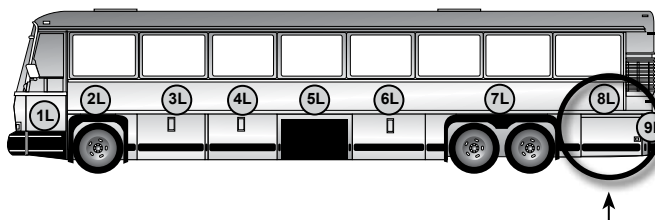
### 2.5" Rub Rail & Components



3L-20-288 Rubber  
3L-20-301 Extrusion Mounting  
3L-20-128M End Cap - Rub Rail  
3R-20-14 Washer - Nylon  
3J-33-50 Bolt - Mount Extrusions to Doors

# Location 8L

## Rear Side Service Door & Adjacent Body Panels

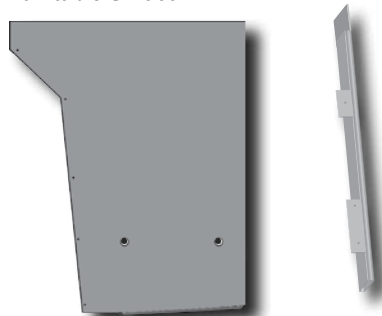


Location

8L

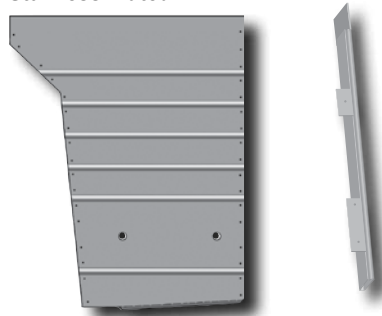
### Adjacent Body Panels

Paintable Smooth



3L-35-597 (45959) Panel  
3L-35-1288 [45959] Panel Molding - Finishing

Stainless Fluted



3L-35-607 Panel  
3L-20-393 Molding - Finishing

### 5" Rub Rail Assembly

3L-20-284  
Rear of LH  
Rear Wheelsg



### 2.5" Rub Rail & Components

3L-20-288 Rubber  
3L-20-301 Mounting Channel  
3L-20-128M End Cap - Rub Rail  
3R-20-14 Washer - Nylon  
3J-33-50 Bolt - Mount Extrusions to Doors



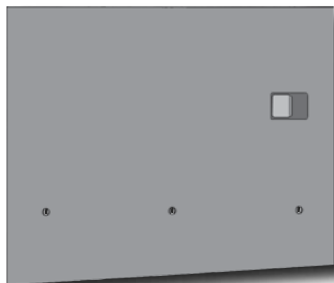
### NOTES:

### Above LH Rear Side Service Doors

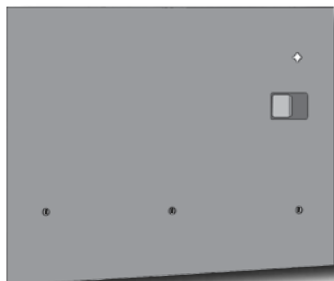
Paintable Smooth



3L-35-603 Panel - Above Door (45959)  
3L-35-1219 Panel - Above Door [45959]



3L-31-685 Door Assy (45959)  
3L-31-681 Frame Assy - w/Inner Panel  
3L-31-683 Frame S/A  
3L-31-670 Panel - Interior Lower  
3L-31-678 Panel  
3L-31-1214 Door Assy [45959]  
3L-31-1218 Frame Assy - w/Inner Panel  
3L-31-1216 Frame S/A  
3L-31-1225 Panel - Interior Lower  
3L-31-1229 Panel



3L-31-993 Door Assy - w/Lock Cut-Out (45959)  
3L-31-980 Frame Assy - w/Inner Panel  
3L-31-978 Frame S/A  
3L-31-670 Panel - Interior Lower  
3L-31-983 Panel - Exterior w/Key Lock Cut-Out  
3L-31-1373 Door Assy - w/Lock Cut-Out [45959]  
3L-31-978 Frame S/A  
3L-31-1383 Panel - Exterior w/Lock Cut-Out

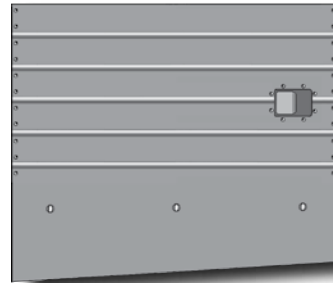
### Rear Engine Door Components

3J-30-18 Door Catch  
3J-30-45 Door Latch  
3L-31-680 Bar - Locking Upper  
3J-31-190 Bar - Locking Lower

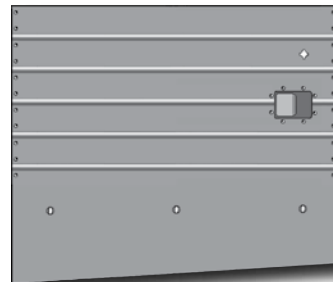
Stainless Fluted



3L-35-605 Panel - Above Door (45959)  
3L-35-1220 Panel - Above Door [45959]



3L-31-697 Door Assy (45959)  
3L-31-681 Frame Assy - w/Inner Panel  
3L-31-687 Panel - Exterior Full  
3L-31-1252 Door Assy [45959]  
3L-31-1218 Frame Assy - w/Inner Panel  
3L-31-1248 Panel - Exterior Full



3L-31-981 Panel - Exterior w/Key Lock Cut-Out  
3L-31-1378 Door Assy - w/Lock [45959]  
3L-31-1388 Panel - Exterior w/Key Lock Cut-Out

### 5" Rub Rail



3L-20-285 Rub Rail Assy (45959)  
3L-20-441 Rub Rail Assy [45959]

### 2.5" Rub Rail & Components

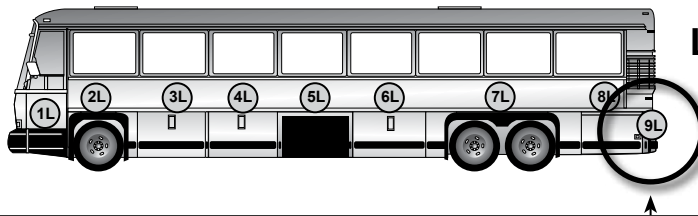


3L-20-289 Rubber (45959)  
3L-20-333 Rubber [45959]  
3L-20-300 Extrusion Mounting (45959)  
3L-20-418 Mounting Channel [45959]  
3L-29-128M End Cap - Rub Rail  
3R-20-14 Washer - Nylon  
3J-33-50 Bolt - Mount Extrusion to Doors

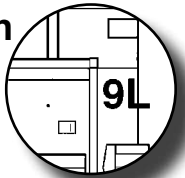


# Location 9L

## Left Rear Corner Panel & Rub Rail

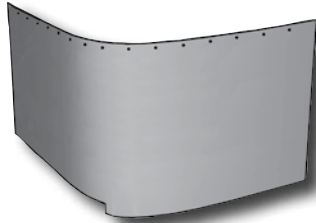


Location



### EARLY MODEL

#### LH Above Tail Light Panels Paintable Smooth or Satin Finish



3L-35-428 Panel - Below Radiator Inlet

#### Panel - Rear of LH Rear Side Service Door Paintable Smooth



3L-35-643 Panel

#### Filler Panel Paintable Smooth

Rear of  
Rear Side Service Door, Lower



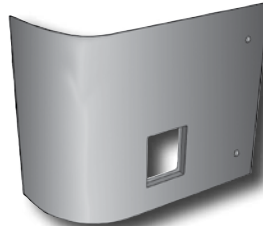
3L-35-156 Use w/Energy ABS Bumper  
3L-35-1178 Panel - Bumper Filler [45959]  
3L-35-1159 w/Energy ABS Bumper (45959)

#### Finishing Molding Rear of LH Side Service Door



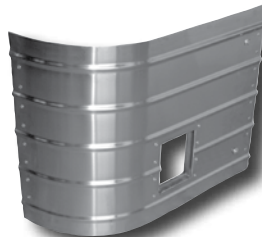
3L-20-393 Molding - Finishing

### LH Satellite Door Assemblies & Panels Paintable Smooth

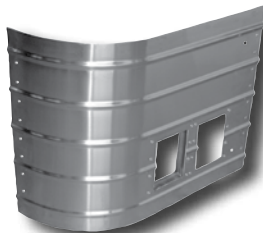


3L-31-1255 Door Assy - LH Satellite  
3L-31-1253 Panel - LH Satellite

### LH Satellite Door [45959] Stainless Fluted



3L-31-1499 Door Assy - LH Satellite  
3L-31-1496 Panel - LH Satellite



3L-31-2238 Door Assembly Air Filter  
Access w/Reflector  
3L-31-2244 Panel - Access Door



3L-31-1194  
Bracket - Door  
Support LH

### Satellite Door Components

3L-31-1168 Frame - LH/RH  
3L-31-1453 Angle - Support Mount LH  
3L-31-1196 Pin Locating Plate Assy  
19-5-1 Dzus Grommet  
19-5-7 Dzus Stud  
19-5-9 Dzus Spring

### LATE MODEL

#### LH Fiberglass Tail Light Panel [45959] Paintable



3L-35-1376 Panel - w/Stop & Turn  
Light [45959]

### 5" Rub Rail Assembly



3G-20-11 Assy (45959)  
3G-20-141 w/Energy ABS Bumper (45959)  
3L-20-281 Assy - Front of Condenser Door [45959]

### 2.5" Rub Rail & Components

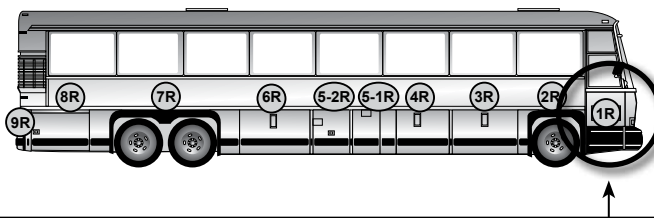


3L-20-71 Rubber (45959)  
3L-20-41 Extrusion Mounting (45959)  
3L-20-311 Rub Rail - Cap Front of Condenser  
Door [45959]  
3L-29-128M End Cap - Rub Rail  
3R-20-14 Washer - Nylon  
3J-33-50 Bolt - Mount Extrusion to Doors

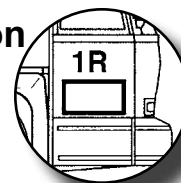
### NOTES:

# Location 1R

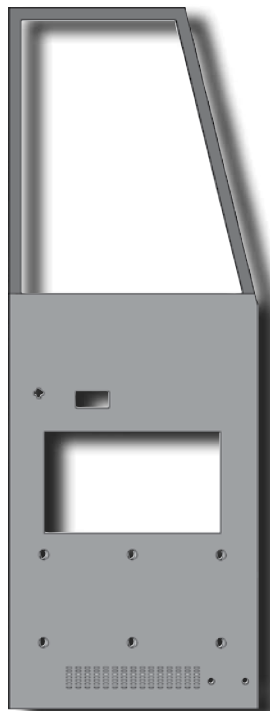
## Entrance Doors & Panels



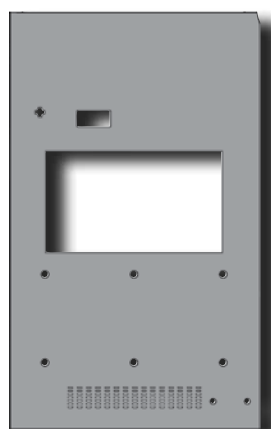
Location



### Entrance Door Assembly Sedan Style - Paintable Smooth

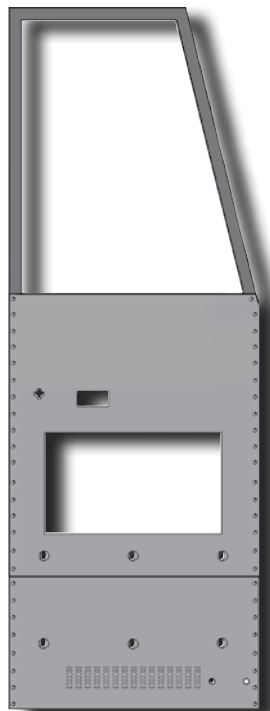


- 3L-32-422-0001 Door Assy - Sedan Entrance
- 3L-32-423 Door S/A - Frame/Insulation & Exterior Panel
- 3J-32-329 Frame Assy - Entrance Door
- 3J-32-157 Kick Panel S/A - Entrance Door Interior Lower

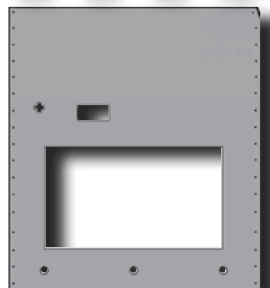


3L-32-424 Panel - Sedan Entrance Door

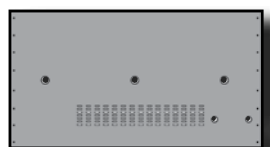
### Entrance Door Assembly Sedan Style - Stainless Fluted



- 3L-32-180-0001 Door Assy - Less Lock & Upper Sash
- 3L-32-89 Door S/A - Entrance Riveted
- 3J-32-329 Frame S/A - Entrance Door
- 3J-32-157 Kick Panel S/A - Entrance Door Interior Lower



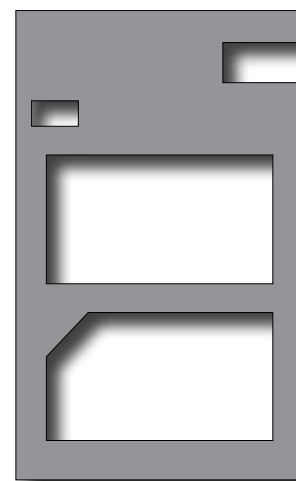
3L-32-100 Panel - Exterior Upper



3J-32-42 Panel - Exterior Lower Section

### Components for Entrance Door - Paintable Smooth & Stainless Fluted

- 3J-32-94 Lock Body Assy - Entrance Door
- 3R-32-238 Lock Body S/A - Entrance Door
- 3J-32-54 Kick Panel - Interior Door
- 3J-32-116 Panel - Reinforce Kick Panel

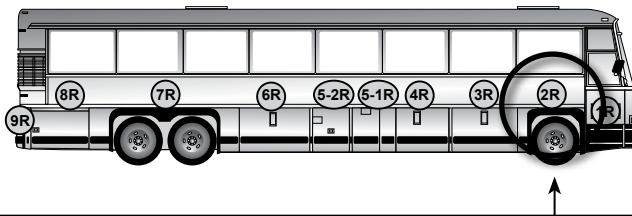


3J-32-222-0001 Panel S/A - Interior Door (Grey)

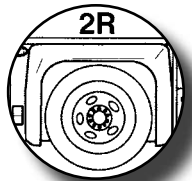
### NOTES:

## Location 2R

### Front Wheelhousing Panels



Location

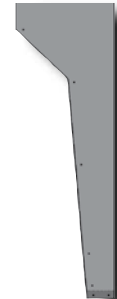


#### Panels - Paintable Smooth

3L-35-4 Panel - Above Front Whlsg



3L-35-599 Panel - Rear of RH Front Whlsg



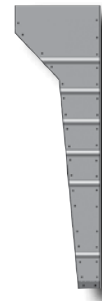
3L-35-140 Panel - S/A w/Switch  
3L-35-141 Panel - w/Switch  
3J-35-293 Box - S/A Mount Entrance Door  
3L-35-143 Door - S/A Exterior Entrance Door Switch Cover

#### Panels - Stainless Fluted

3J-35-66 Panel - Above Front Whlsg

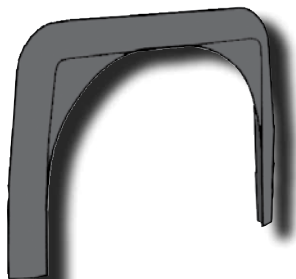


3L-35-615  
Panel S/A - Rear of RH Front Whlsg



3J-35-291 Panel S/A - Front of RH Front Whlsg  
3J-35-292 Panel - w/Cut-Out  
3J-35-293 Box S/A - Mount Entrance Door  
3J-35-297 Door S/A - Ext Entrance Door Switch Cover

#### Front Fender



3L-23-57-0001  
Fender - Front / Fiberglass

#### 5" Rub Rail Assembly

3L-20-332  
Rear of Front Whlsg



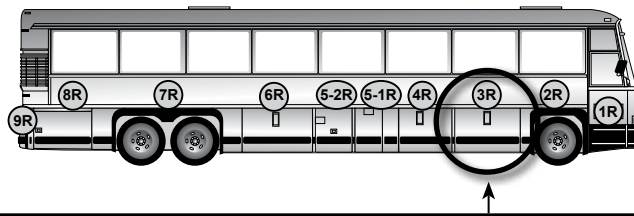
#### 2.5" Rub Rail

3L-20-348  
Rear of Front Whlsg

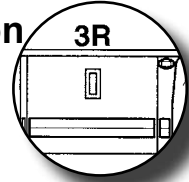


## Location 3R

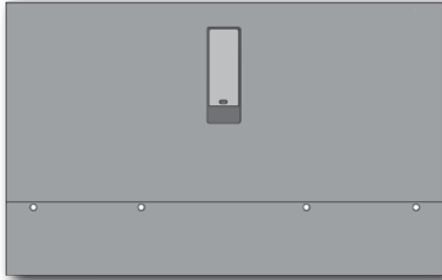
### Baggage Doors & Adjacent Body Panels



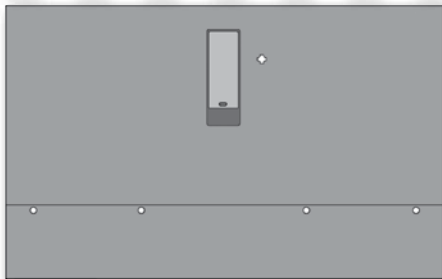
## Location 3R



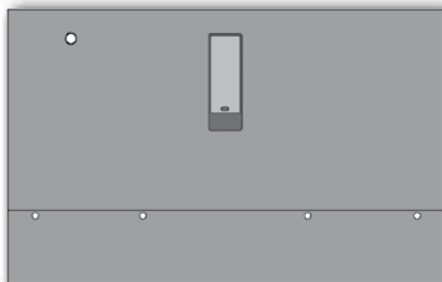
#### Baggage Doors - Paintable Smooth



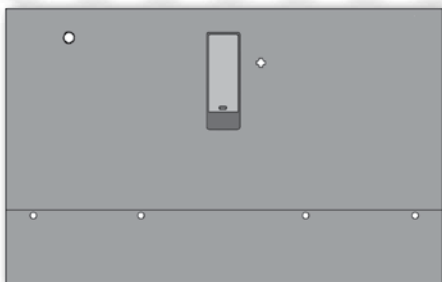
- 3L-29-55 Door Assy - w/Rub Rail (50129)
- 3L-29-761 Door Assy [50129]
- 3L-29-32 Panel - Exterior Upper
- 3L-29-31 Panel - Exterior Lower



- 3L-29-69 Door Assy - Bay #1 or #3 w/Key Lock
- 3L-29-68 Panel - Upper w/Lock
- 3L-29-31 Panel - Exterior Lower

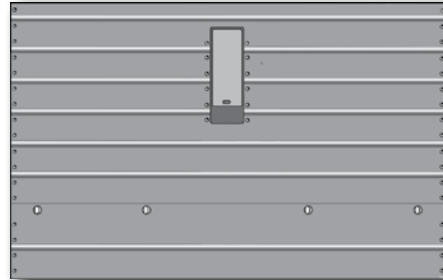


- 3L-29-373 Door Assy - Bay #1 w/Dock Light
- 3L-29-93 Panel - Upper w/Dock Light Cut-Out
- 3L-29-31 Panel - Exterior Lower

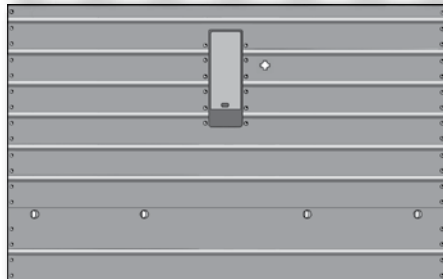


- 3L-29-375 Door Assy - Bay #1 w/Dock Light
- 3L-29-212 Panel - Upper w/Dock Light & Key Lock Cut-Outs
- 3L-29-31 Panel - Exterior Lower

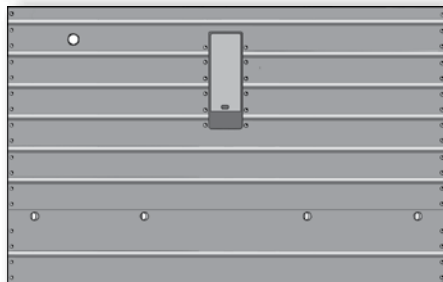
#### Baggage Doors - Stainless Fluted



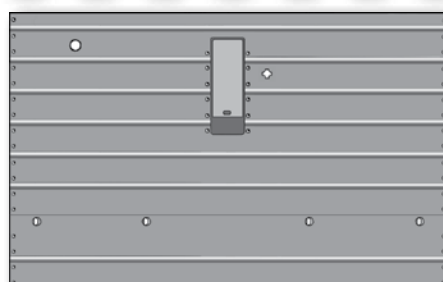
- 3L-29-73 Door Assy - Bay #1 or #3
- 3L-29-766 Door Assy
- 3L-29-74 Panel - Exterior Upper
- 3L-29-75 Panel - Exterior Lower



- 3L-29-81 Door Assy - Bay #1 or #3 w/Key Lock
- 3L-29-82 Panel - Upper w/Lock
- 3L-29-75 Panel - Exterior Lower



- 3L-29-377 Door Assy - Bay #1 w/Dock Light
- 3L-29-383 Panel - Upper w/Dock Light Cut-Out
- 3L-29-75 Panel - Exterior Lower



- 3L-29-379 Door Assy - Bay #1 w/Dock Light
- 3L-29-141 Panel - Upper Exterior w/Dock Light & Lock Cut-Outs
- 3L-29-75 Panel - Exterior Lower

#### Adjacent Body Panels & Rub Rails

##### Paintable Smooth

3L-35-599  
Panel - Rear of RH  
Front Whlsg

3L-35-8  
Panel - Between  
Bag Doors & Rear  
of Battery

##### Stainless Fluted

3L-35-615  
Panel S/A - Rear  
of RH Front  
Whlsg

3L-35-157  
Panel - Between  
Bag Doors

#### 5" Rub Rail

3G-20-109  
Between Bag  
Doors

3L-20-332  
Rub Rail Assy  
Rear of RH  
Front W/H

#### 2.5" Rub Rail

3L-20-53  
Between Bag  
Doors

3L-20-348  
Rear of RH  
Front W/H

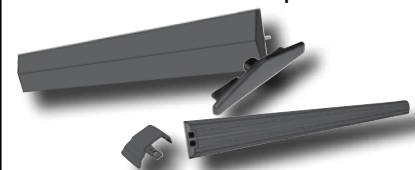
#### 5" Rub Rail Assembly

3L-29-56

#### 2.5" Rub Rail Components

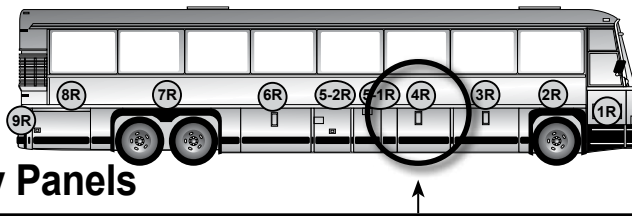
- 3L-29-63 Rubber
- 3L-29-65 Mounting Channel
- 3L-29-128M End Cap - Rub Rail
- 3R-20-14 Washer - Nylon
- 3J-33-50 Bolt - Mount Extrusion to Doors

See page 31-32 for all Rub Rail Assemblies & Components.

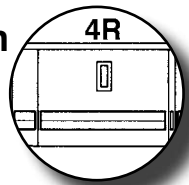


## Location 4R

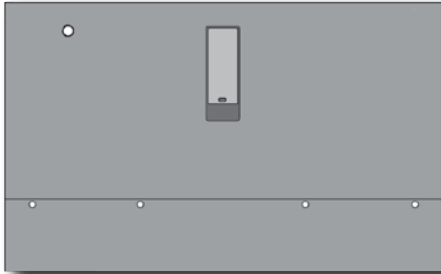
### Baggage / Wheelchair Doors & Adjacent Body Panels



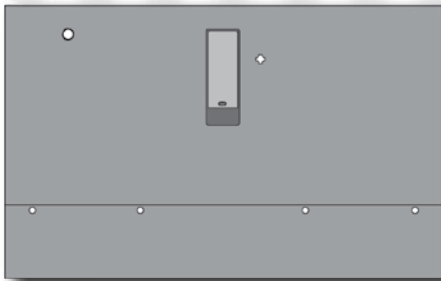
Location



#### Baggage Doors - Paintable Smooth

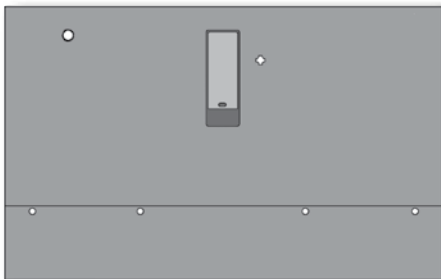


- 3L-29-148 Door Assy - Bay #2 w/Turn Lamp
- 3L-29-762 Door Assy - Bay #2 w/Turn Lamp
- 3L-29-150 Panel - Upper w/Light
- 3L-29-31 Panel - Exterior Lower



- 3L-29-222 Door Assy - Bay #2 w/Key Lock & Turn Lamp
- 3L-29-212 Panel - Upper Exterior w/Dock Light & Key Lock Cut-Outs
- 3L-29-31 Panel - Exterior Lower

#### Wheelchair Doors - Paintable Smooth

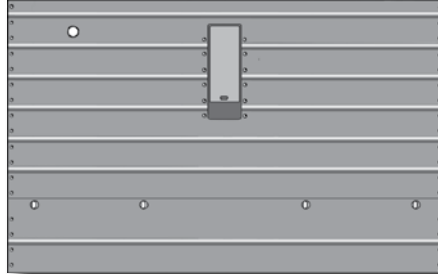


- 3L-29-538 Door Assy - Bag #2 RH w/Wheel chair Lift
- 3L-29-542 Panel - Exterior Upper
- 3L-29-543 Panel - Exterior Lower
- 3L-29-534 Hinge - Vertical

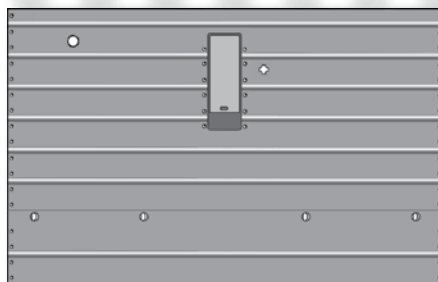


- 03-29-1715 Wheel Chair Lift Door Assy
- 03-29-1714 Panel - Exterior Upper
- 3L-29-1130 Panel - Exterior Lower

#### Baggage Doors - Stainless Fluted

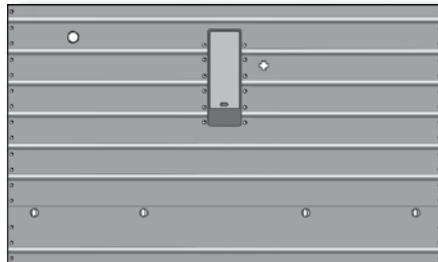


- 3L-29-132 Door Assy - Bay #2 Less Cylinder w/Turn Lamp
- 3L-29-768 Door Assy - Bay #2 Less Cylinder w/Turn Lamp
- 3L-29-130 Panel - Upper Exterior w/Turn Lamp Cut-Out
- 3L-29-75 Panel - Exterior Lower

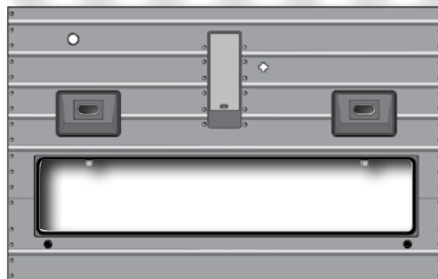


- 3L-29-118 Door Assy - Bay #2 w/Key Lock & Turn Lamp
- 3L-29-115 Panel - Upper Exterior w/Lock & Turn Lamp Cut-Outs
- 3L-29-75 Panel - Lower Exterior

#### Wheelchair Doors - Stainless Fluted



- 3L-29-537 Door Assy - Bag #2 RH w/Wheelchair Lift
- 3L-29-535 Panel - Exterior Upper
- 3L-29-536 Panel - Exterior Lower
- 3L-29-534 Hinge - Vertical



- 3L-29-1039 Wheel Chair Lift Door Assembly
- 3L-29-1093 Panel - Exterior Upper
- 3L-29-1009 Panel - Exterior Lower

#### Adjacent Body Panels & Rub Rails

##### Paintable Smooth

3L-35-590  
Panel - Front of Fuel Door

3L-35-8  
Panel - Between Bag Doors & Rear of Battery

##### Stainless Fluted

3L-35-612  
Panel - Front of Fuel Door

3L-35-157  
Panel - Between Bag Doors

#### 5" Rub Rail



3L-20-282  
Front of Fuel Door

3G-20-109  
Between Bag Doors



#### 2.5" Rub Rail



3L-20-310  
Front of Fuel Door

3L-20-53  
Between Bag Doors



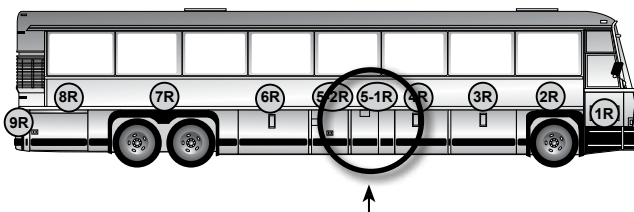
#### Bag Door with Wheel Chair Lift Components

- 3F-29-107 Bracket - Latch Casting, LH Lower Door Lock
- 3F-29-108 Bracket - Latch Casting, RH Lower Door Lock
- 3F-29-216 Rod - Locking Galvanized
- 3F-29-220 Clamp - Mounting, Lock Rod
- 3F-29-221 Stop - Locking Rod
- 3F-29-257 Bearing - Base, Lock Rod
- 3F-29-258 Bearing - Cap, Lock Rod
- 3L-20-718 Bumper
- 3L-29-61 Pocket Assy - Complete
- 3L-29-70 Handle Only - Baggage Door
- 3L-29-71 Handle Assy - Locking Style
- 3L-29-1110 Housing - Wheel Chair Lift
- Curb Light
- 3L-29-1167 Frame - Bag Door Painted
- 3M-29-108 Eye Bolt

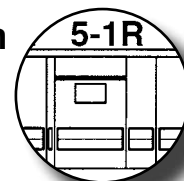


# Location 5-1R

## Fuel Doors & Adjacent Body Panels



Location



**Door Assemblies & Panels**  
Paintable Smooth

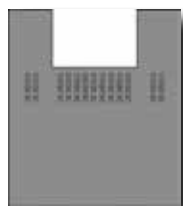
3L-31-885  
3L-31-882  
3L-31-874

Door Assy - Fuel Compartment  
Door Assy - Fuel Filler  
Frame Assy - Fuel Compartment

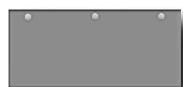


3L-31-875  
3L-31-868  
3L-31-874

Door Assy - w/Locking  
Filler Door  
Door Assy - Fuel Filler  
w/Hinge (Locking)  
Frame Assy - Fuel Compartment



3L-31-853 Panel - Upper, Fuel Door

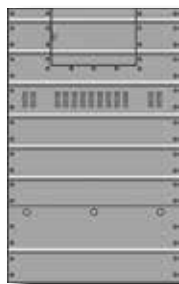


3L-31-854 Panel - Lower, Fuel Door

### 5" Rubber Rub Rail Assembly & Components



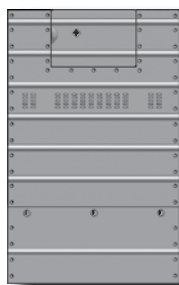
3L-31-168 Rail Assy  
3L-31-173 Rubber Rub Rail - Fuel Door  
3L-31-170 Channel - Mount, Fuel Door  
3G-20-10 End Cap - Rubber Rub Rail  
3G-29-18 End Plug Mounting Plate  
3R-20-14 Washer - Nylon  
3J-33-50 Bolt - Mount Extrusions to Door



**Door Assemblies & Panels**  
Stainless Fluted

3L-31-910  
3L-31-897  
3L-31-874

Door Assy - Fuel Compartment  
Door Assy - Fuel Filler w/Hinge  
Frame Assy - Fuel Compartment



3L-31-911  
3G-31-28  
3L-31-874

Door Assy - Fuel Compartment  
w/Locking Filler Door  
Door Assy - Fuel Filler  
w/Hinge (Locking)  
Frame Assy - Fuel Compartment



3L-31-900 Panel - Exterior Upper Fuel Compartment



3L-31-899 Panel - Lower, Fuel Door

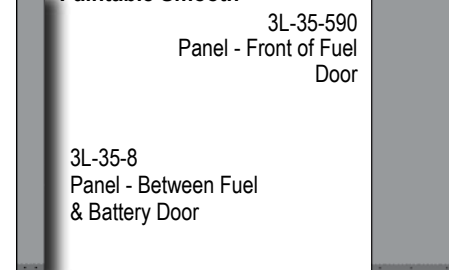
### 2.5" Rubber Rub Rail Components



3L-20-68 Rubber - Fuel Door  
3L-20-38 Mounting Channel - Fuel Door  
3L-29-128M End Cap - Rub Rail  
3R-20-14 Washer, Nylon  
3J-33-50 Bolt - Mount Extrusion to Doors

### Adjacent Panels & Rub Rails

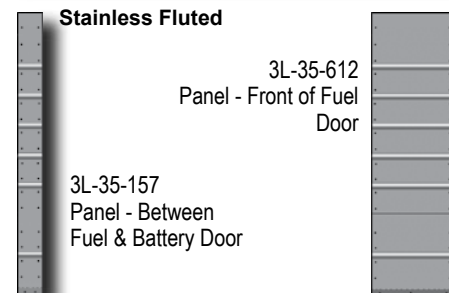
#### Paintable Smooth



3L-35-590  
Panel - Front of Fuel Door

3L-35-8  
Panel - Between Fuel & Battery Door

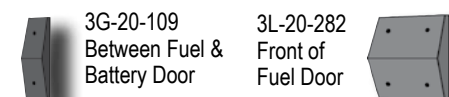
#### Stainless Fluted



3L-35-612  
Panel - Front of Fuel Door

3L-35-157  
Panel - Between Fuel & Battery Door

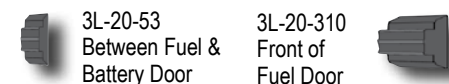
### 5" Rubber Rub Rail



3G-20-109  
Between Fuel & Battery Door

3L-20-282  
Front of Fuel Door

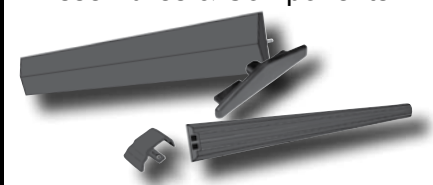
### 2.5" Rubber Rub Rail



3L-20-53  
Between Fuel & Battery Door

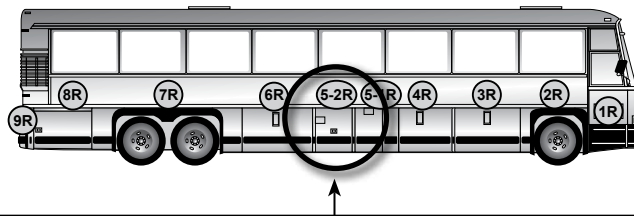
3L-20-310  
Front of Fuel Door

See page 31-32 for all Rub Rail Assemblies & Components.

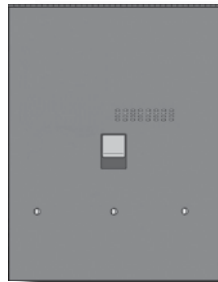
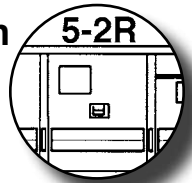


## Location 5-2R

### Battery Doors & Components



Location **5-2R**



**Assembly with C/H Filter  
Paintable Smooth  
(47071)**

3L-30-61	Door Assy
3L-30-2	Door S/A - Riveted
3L-30-6	Frame S/A - Welded
3L-30-5	Panel - Exterior
3J-30-15	Door Latch
3J-30-45	Door Catch End Bolt
3J-30-6	Plate & Bar S/A - Front Pivot
3J-30-26	Plate & Bar S/A
3L-30-67	Door Assy - Less Lock Tumbler
3L-30-12	Panel - Exterior

#### 5" Rubber Rub Rail Assembly & Components



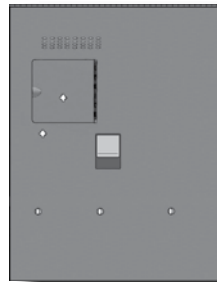
3G-30-1	Rub Rail Assy
3G-30-2	Rubber
3G-30-3	Mounting Channel
3G-20-10	End Cap - Rubber Rub Rail
3G-29-18	End Cap Mounting Plate
3R-20-14	Washer - Nylon
3J-33-50	Bolt - Mount Extrusion To Doors

#### 2.5" Rubber Rub Rail Components



3L-20-69	Rubber Only
3L-20-39	Mounting Channel
3L-29-128M	End Cap
3R-20-14	Washer - Nylon
3J-33-50	Bolt Extrusion to Doors

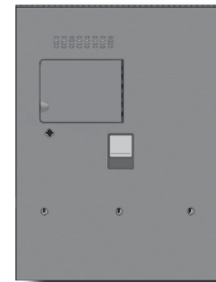
#### NOTES:



**Assembly with C/H Filter &  
Small Access Door  
Paintable Smooth  
(47071)**

3L-30-324	Door Assy - Battery & C/H Filter w/Hinged Panel
3L-30-238	Frame Assy
3L-30-273	Panel - Battery Door w/Switch Access
3L-30-251	Door Assy - Switch Access Non Locking
3L-30-424R58	Panel - Upper, Inner
3L-30-423R58	Panel - Lower, Inner
3L-30-325	Door Assy - w/Key Lock & Hinged Panel
3L-30-257	Panel - w/Switch Access & Lock
3L-30-249	Door - Switch Access (8 5/8" Long)
3L-30-294	Door Assy - Switch Access w/Key Lock
3L-30-297	Door Assy - Switch Access w/Simple (Non-Lock Body) Key Lock

#### NOTES:



**Assembly with C/H Filter &  
Large Access Door  
Paintable Smooth  
(47071)**

3L-30-374	Door Assy - w/Large Access Door w/o Lock
3L-30-238	Frame Assy
3L-30-395	Panel - w/Large Access Door
3L-30-396	Panel - Battery Door w/Large Access Lock
3L-30-401	Door Assy - w/Large Switch Access
3L-30-405	Door - Switch Access (10 1/2" Long)
3L-30-424R58	Panel - Upper Inner
3L-30-423R58	Panel - Lower Inner
3L-30-377	Door Assy - C/H w/Key Lock & Hinged Panel
3L-30-376	Door Assy - C/H w/Lock/Lock & Hinged Panel
3L-30-375	Door Assy - C/H w/Lock/Lock & Hinged Panel

#### Adjacent Body Panel Paintable Smooth

3L-35-8	Panel - Between Baggage & Rear of Battery
---------	---

#### 5" Rubber Rub Rail

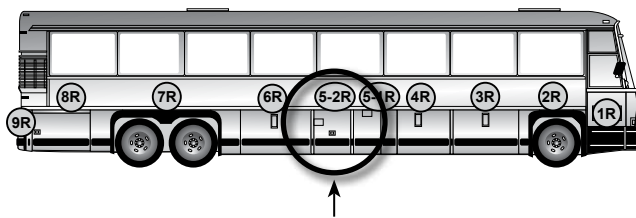
3G-20-109	Rub Rail - Rear of Battery Door
-----------	---------------------------------

#### 2.5" Rubber Rub Rail

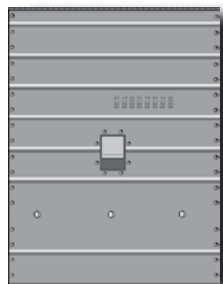
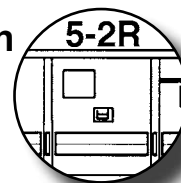
3L-20-53	Rubber - Rub Rail Between Doors
----------	---------------------------------

## Location 5-2R

### Battery Doors & Components

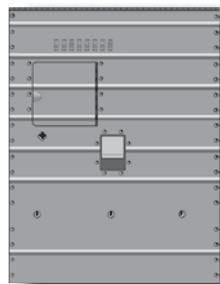


Location **5-2R**



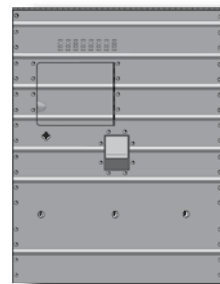
**Assembly with C/H Filter  
Stainless Fluted  
(47071)**

3L-30-62	Door Assy
3L-30-48	Door S/A - Riveted
3L-30-6	Frame S/A - Welded
3L-30-50	Panel
3L-30-64	Door Assy - (Less Tumbler Assy)
3L-30-54	Door S/A - Riveted
3L-30-55	Panel - w/Key Lock



**Assembly with C/H Filter &  
Small Access Door  
Stainless Fluted  
(47071)**

3L-30-328	Door Assy - w/Fixed Panel
3L-30-99	Frame Assy
3L-30-272	Panel - w/Access Door Cut-Out
3L-30-281	Door S/A - Switching Access Locking
3L-30-280	Door - Switch Access (8 5/8" Long)
3L-30-424R58	Panel - Upper Inner
3L-30-423R58	Panel - Lower Inner
3L-30-83	Hinge Assy - RH, Interior Access Cover
3L-30-82	Hinge Assy - LH, Interior Access Cover
3L-30-329	Door Assy - w/Key Lock & Fixed Panel
3L-30-330	Door Assy - w/Lock/Lock & Hinged Panel
3L-30-238	Frame Assy
3L-30-271	Panel - w/Switch Access & Lock
3L-30-333	Door Assy - Small Locking Access



**Assembly with C/H Filter &  
Large Access Door  
Stainless Fluted  
(47071)**

3L-30-391	Door Assy - w/Hinged Panel
3L-30-238	Frame Assy
3L-30-400	Panel - Large Access Door Cut-Out
3L-30-403	Door Assy - Switch Access Non-Locking
3L-30-424R58	Panel - Upper Inner
3L-30-423R58	Panel - Lower Inner
3L-30-83	Hinge Assy - RH, Interior Access Cover
3L-30-82	Hinge Assy - LH, Interior Access Cover
3L-30-394	Door Assy - w/Key Lock & Hinged Panel
3L-30-339	Panel - Key Lock Cut-Outs
3L-30-407	Door - Switch Access (10 1/2" Long)
3L-30-393	Door Assy - w/Lock/Lock & Hinged Panel [47071]

### Interior Panels & Components



3L-30-424R58 Panel - Upper Inner

#### Decals

7L-8-1189	Wiring Diagonal
7L-8-696	12/24 V. System
7K-13-282	Do Not Weld

3L-30-423R58 Panel - Lower Inner



3L-30-84 Latch Assy - Interior Access Cover



3L-30-83 Hinge Assy - RH Interior Access Cover



3J-30-32 Seal - Upper Divider



3R-30-39 Channel S/A - Prop Mounting Welded



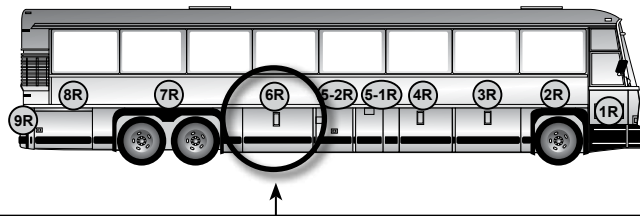
3J-30-30 Plate - Battery Seal Upper/Bottom



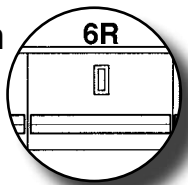
3J-30-33 Seal - Rubber Battery Door Bottom

## Location 6R

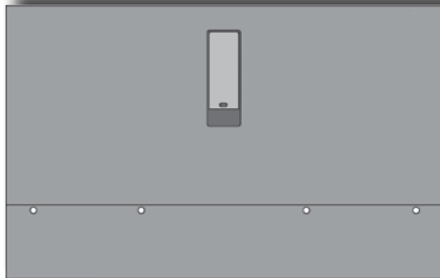
### Baggage Doors & Adjacent Body Panels



Location

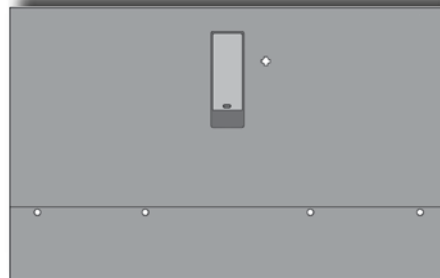


#### Baggage Doors - Paintable Smooth



- 3L-29-55 Door Assy - w/Rubber Rub Rail
- 3L-29-761 Door Assy
- 3L-29-32 Panel - Exterior Upper
- 3L-29-31 Panel - Exterior Lower

#### Baggage Doors - Paintable Smooth

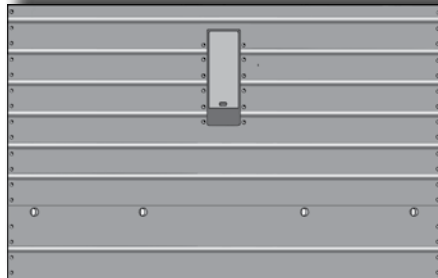


- 3L-29-69 Door Assy - Large Bay #1 or #3 w/Key Lock
- 3L-29-68 Panel - Exterior Upper w/Lock
- 3L-29-31 Panel - Exterior Lower

#### Bag Door Components

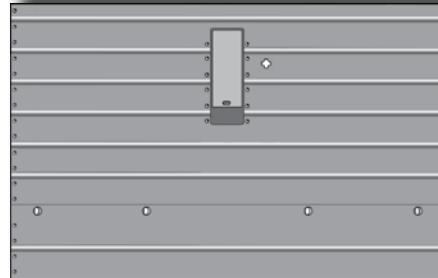
- 3F-29-107 Bracket - Latch, Casting, LH, Lower Door Lock
- 3F-29-108 Bracket - Latch, Casting, RH, Lower Door Lock
- 3F-29-186 Bearing - Cap, Swing Tube
- 3F-29-187 Bearing - Base, Swing Tube
- 3F-29-216 Rod - Locking, Galvanized
- 3F-29-219 Bumper - Baggage Door Assy
- 3F-29-220 Clamp - Mounting, Lock Rod
- 3F-29-221 Stop - Locking Rod, Baggage Door
- 3F-29-257 Bearing - Base, Lock Rod
- 3F-29-258 Bearing - Cap, Lock Rod
- 3L-29-21 Seal - Baggage Door
- 3L-29-30 Panel - Inner, Baggage Door
- 3L-29-61 Pocket Assy - Complete
- 3L-29-70 Handle Only - Baggage Door
- 3L-29-71 Handle Assy - Baggage Door Complete
- 3L-29-1167 Frame - Bag Door Painted
- 3M-29-108 Eye Bolt

#### Baggage Doors - Stainless Fluted



- 3L-29-73 Door Assy - Large Bay #1 or #3
- 3L-29-766 Door Assy
- 3L-29-74 Panel - Exterior Upper
- 3L-29-75 Panel - Exterior Lower

#### Baggage Doors - Stainless Fluted



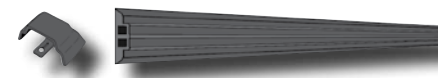
- 3L-29-81 Door Assy - Large Bay #1 or #3 w/Key Lock
- 3L-29-82 Panel - Exterior Upper w/Lock
- 3L-29-75 Panel - Exterior Lower

#### 5" Rubber Rub Rail Components



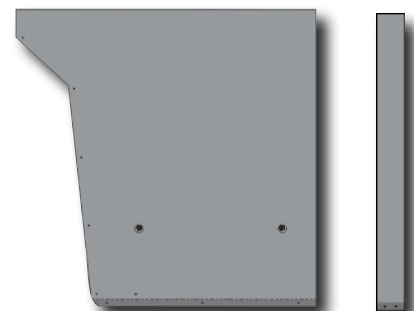
- 3L-29-56 Rub Rail Assy
- 3L-29-59 Rubber
- 3L-29-58 Mounting Channel
- 3G-20-10 End Cap - Rubber Rub Rail
- 3G-29-18 End Cap - Mounting Plate
- 3R-20-14 Washer - Nylon
- 3J-33-50 Bolt - Mount Extrusion To Doors

#### 2.5" Rub Rail Components



- 3L-29-63 Rubber
- 3L-29-65 Mounting Channel
- 3L-29-128M End Cap - Rub Rail
- 3R-20-14 Washer - Nylon
- 3J-33-50 Bolt - Mount Extrusion To Doors

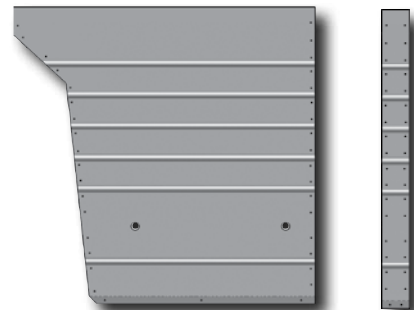
#### Adjacent Body Panels & Rub Rails Paintable Smooth



- 3L-35-592 Panel - Front of RH Rear Whlsg

- 3L-35-8 Panel - Between Baggage & Rear of Battery

#### Stainless Fluted



- 3L-35-608 Panel - Front of RH Rear Whlsg

- 3L-35-610 Panel - Rear of Fuel & Battery Door

#### 5" Rubber Rub Rail



- 3L-20-283 Rub Rail Assy - Front of RH Rear Whlsg

- 3G-20-109 Rub Rail - Rear of Battery Door

#### 2.5" Rub Rail

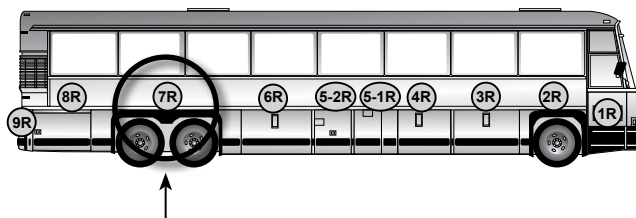


- 3L-20-287 Rubber Front of RH Rear Whlsg

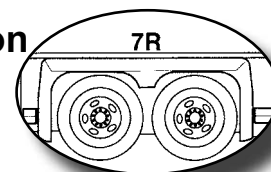
- 3L-20-53 Rubber - Rub Rail Between Doors

## Location 7R

### Rear Wheelhousing Panels



Location



#### Panels - Paintable Smooth



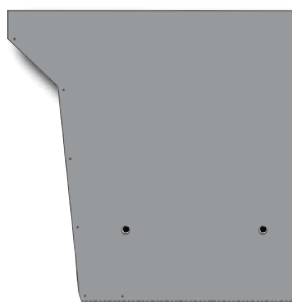
3L-35-651

Angle - Finishing Above Rear Whlsg



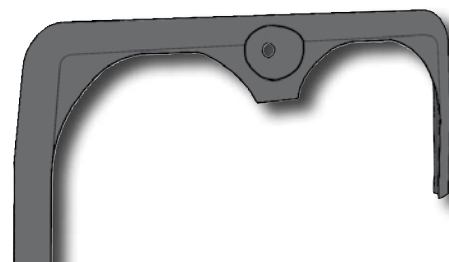
3L-35-591 Panel - Rear of RH Rear Whlsg  
(45959)

3L-35-1287 Panel - Rear of RH Rear Whlsg  
[45959]



3L-35-592 Panel - Front of RH Rear Whlsg

#### Rear Fender



3L-23-58-0001

Fender - Rear / Fiberglass

#### NOTES:

#### Panels - Stainless Fluted

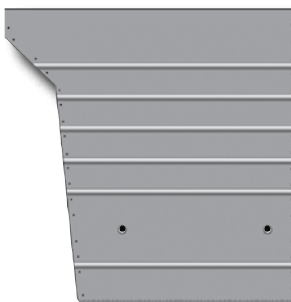


3L-35-651

Angle - Finishing Above Rear Whlsg



3L-35-606 Panel - Rear of RH Rear Whlsg



3L-35-608 Panel - Front of RH Rear Whlsg

#### 5" Rub Rail Assembly

3L-20-284  
Rear of RH Rear Whlsg



#### 5" Rub Rail Assembly

3L-20-283  
Front of RH Rear Whlsg



#### 2.5" Rub Rail & Components

3L-20-288 Rubber  
3L-20-301 Mounting Channel  
3L-29-128M End Cap - Rub Rail  
3R-20-14 Washer - Nylon  
3J-33-50 Bolt - Mount Extrusion To Doors

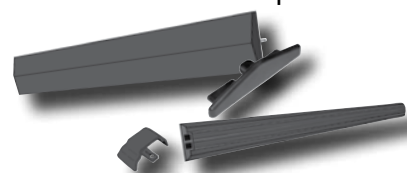


#### 2.5" Rub Rail & Components

3L-20-287 Rubber  
3L-20-302 Mounting Channel  
3L-29-128M End Cap - Rub Rail  
3R-20-14 Washer - Nylon  
3J-33-50 Bolt - Mount Extrusion To Doors



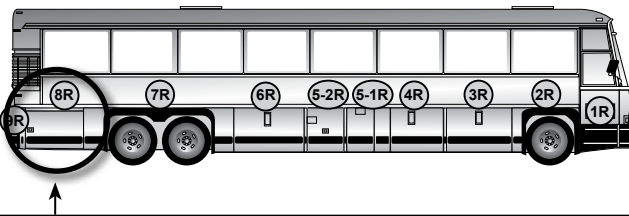
See page 31-32 for all Rubrail Assemblies & Components.



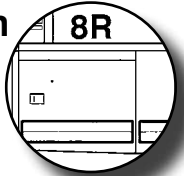


# Location 8R

## Rear Side Service Door & Adjacent Body Panels

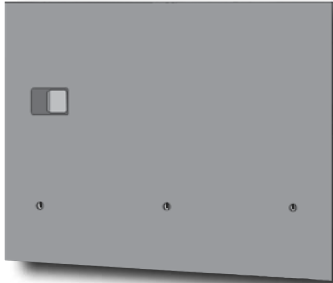


Location 8R

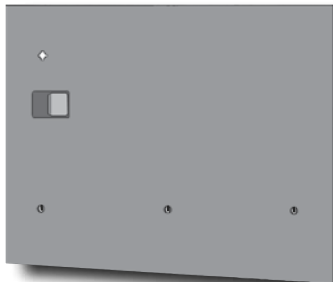


### Panels & Doors - Paintable Smooth

3L-35-603 Panel - Above Door (45959)  
3L-35-1219 Panel - Above Door [45959]

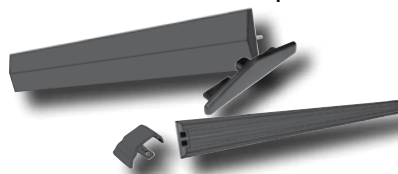


3L-31-686 Door Assy (45959)  
3L-31-682 Frame Assy - w/Inner Panel  
3L-31-684 Frame Assy  
3L-31-671 Panel - Interior Lower  
3L-31-679 Panel - Exterior Full  
3L-31-1213 Door Assy [45959]  
3L-31-1217 Frame Assy - w/Inner Panel  
3L-31-1215 Frame Assy  
3L-31-1224 Panel - Interior Lower  
3L-31-1228 Panel - Exterior Full



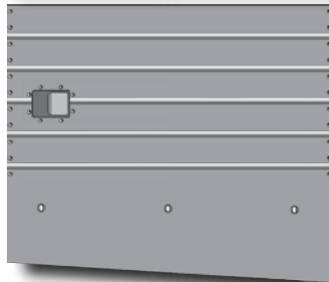
3L-31-994 Door Assy - w/Lock (45959)  
3L-31-980 Frame Assy - w/Inner Panel  
3L-31-979 Frame Assy  
3L-31-671 Panel - Interior Lower  
3L-31-984 Panel - w/Lock Cut-Out  
3L-31-1373 Door Assy - w/Lock [45959]  
3L-31-977 Frame S/A  
3L-31-1380 Panel - RH Rear Service Door

See page 31-32 for all Rub Rail Assemblies & Components.

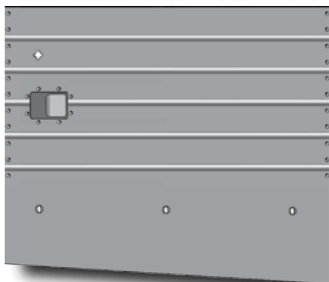


### Panels & Doors - Stainless Fluted

3L-35-605 Panel - Above Door (45959)  
3L-35-1220 Panel - Above Door [45959]



3L-31-698 Door Assy (45959)  
3L-31-682 Frame Assy - w/Inner Panel  
3L-31-688 Panel - Exterior Full  
3L-31-1251 Door Assy [45959]  
3L-31-1217 Frame Assy - w/Inner Panel  
3L-31-1247 Panel - Exterior Full



3L-31-698 Door Assy (45959)  
3L-31-979 Frame Assy - w/Inner Panel  
3L-31-671 Panel - Interior Lower  
3L-31-982 Panel - w/Lock Cut-Out  
3L-31-1376 Door Assy - w/Lock [45959]  
3L-31-1386 Panel - w/Lock Cut-Out

### 5" Rub Rail



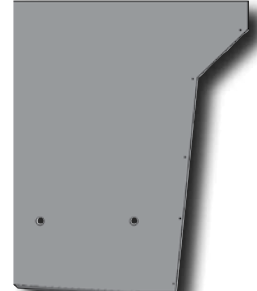
3L-20-285 Rub Rail Assy (45959)  
3L-20-441 Rub Rail Assy [45959]

### 2.5" Rub Rail & Components



3L-20-289 Rubber (45959)  
3L-20-300 Extrusion - Mount (45959)  
3L-20-333 Rubber [45959]  
3L-20-418 Mounting Channel [45959]  
3L-29-128M End Cap (45959)  
3R-20-14 Washer - Nylon  
3J-33-50 Bolt - Mount Extrusion To Doors

### Adjacent Body Panels Paintable Smooth



3L-20-394 Molding - Finishing  
3L-35-591 (45959) Panel  
3L-35-1287 [45959] Panel

### Stainless Fluted



3L-20-394 Molding - Finishing  
3L-35-606 Panel

### 5" Rub Rail Assembly



3L-20-284  
RH Rear WhlHsg

### 2.5" Rub Rail & Components



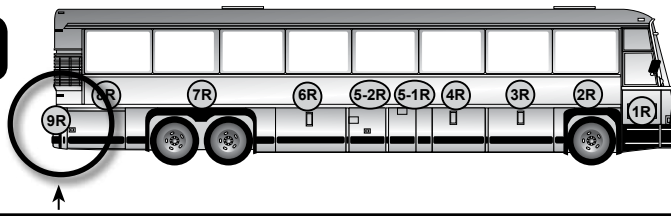
3L-20-288 Rubber  
3L-20-301 Mounting Channel  
3L-29-128M End Cap - Rubber Rub Rail  
3R-20-14 Washer - Nylon  
3J-33-50 Bolt - Mount Extrusion To Doors

### Rear Side Service Door Components

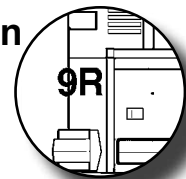
3J-30-18 Door Catch  
3J-30-45 Door Latch  
3L-31-680 Bar - Locking Upper  
3J-31-190 Bar - Locking Lower

## Location 9R

### Right Rear Corner Panels & Rub Rail



Location



#### EARLY MODEL

##### RH Above Tail Light Panels

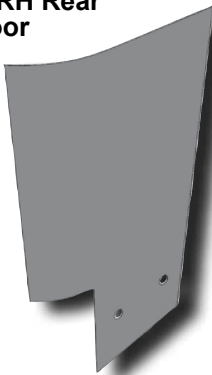
Paintable Smooth or OEM Finish (Satin)



3L-35-429 Panel - Below Radiator Inlet RH

##### Panel - Rear of RH Rear Side Service Door

Paintable Smooth



3L-35-644 Panel

##### Filler Panel

Paintable Smooth

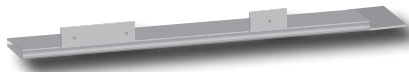
##### Rear of Rear Side Service Door, Lower



3L-35-155 Panel - Use w/Energy ABS Bumper  
3L-35-1179 Panel - Bumper Filler RH [45959]  
3L-35-1167 Panel - Use w/Energy ABS Bumper (45959)

##### Finishing Molding

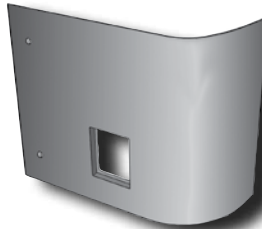
Rear of LH Side Service Door



3L-20-394 Molding - Finishing

#### Satellite Door Assemblies & Panels

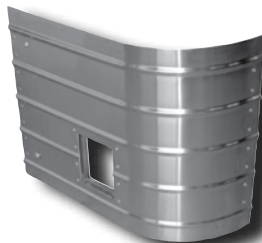
Paintable Smooth



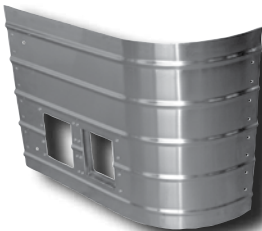
3L-31-1256 Door Assy - RH Satellite  
3L-31-1254 Panel - Satellite RH

#### Satellite Door Assemblies [45959]

Stainless Fluted

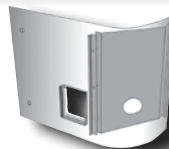


3L-31-1500 Door Assy - Satellite RH  
3L-31-1497 Panel - Satellite RH



3L-31-2239 Door Assy - Compressor Access w/Reflector  
3L-31-2247 Panel - Access Door RH

3L-31-1250 Door - Support RH



#### Satellite Door Components

3L-31-1168 Frame - LH/RH  
3L-31-1454 Angle - Support Mount RH  
3L-31-1196 Pin Locating Plate Assy  
19-5-1 Dzus Grommet  
19-5-7 Dzus Stud  
19-5-9 Dzus Spring

#### LATE MODEL

##### Fiberglass Tail Light Panel [45959]

Paintable



3L-35-1374 RH Tail Light Panel w/Stop & Turn Light Mounting  
3L-35-1581 RH Tail Light Panel w/Stop & Turn Light Mounting w/Radiator Louvers

#### 5" Rub Rail Assembly



3G-20-11 Assy (45959)  
3G-20-141 w/Energy ABS Bumper (45959)  
3L-20-281 Rub Rail Assy - [45959]

#### 2.5" Rub Rail & Components

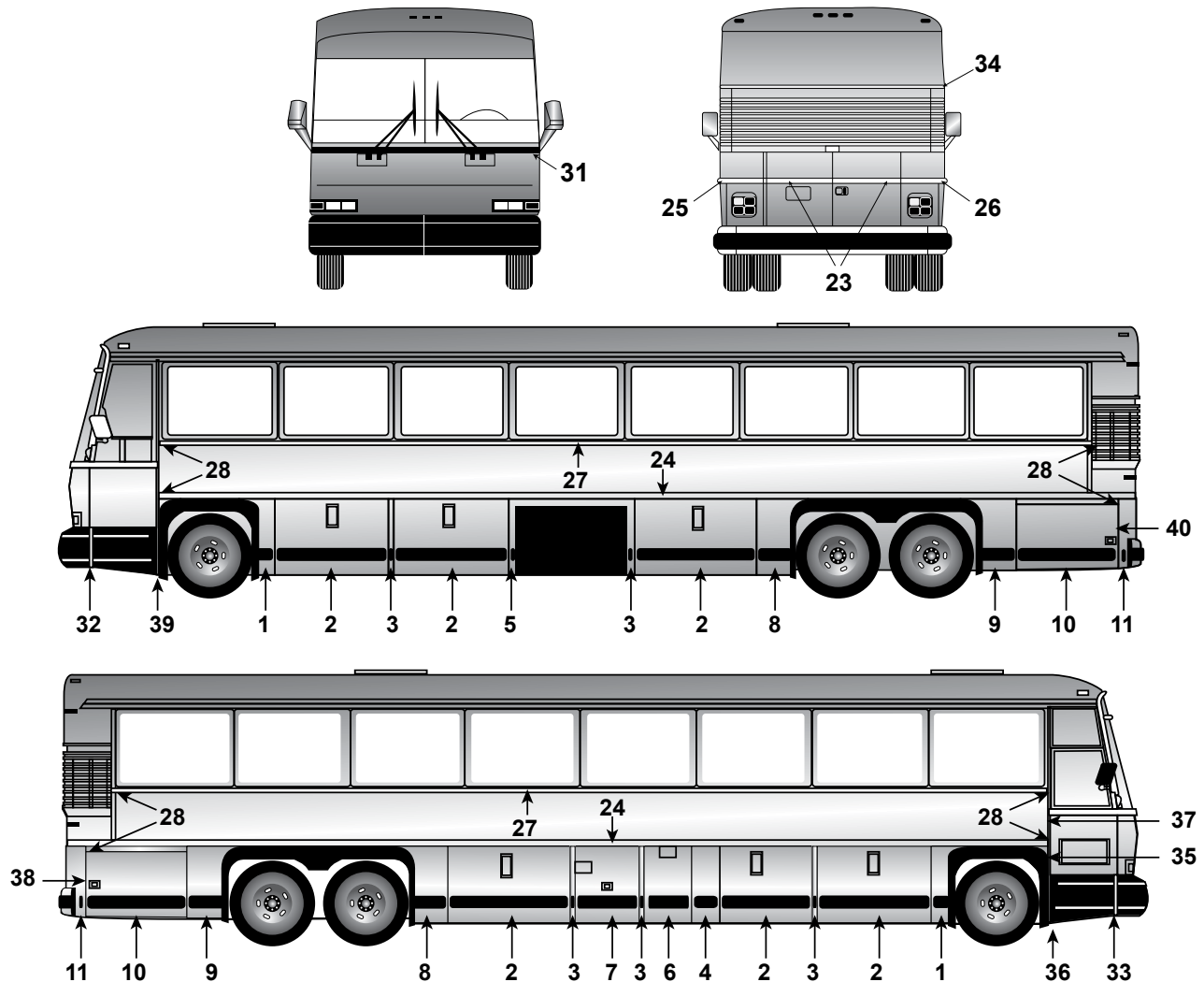


3L-20-71 Rubber (45959)  
3L-20-40 Mounting Channel (45959)  
3L-20-196 w/Energy Bumper (45959)  
3L-29-63 Extrusion w/Energy Bumper (45959)  
3L-20-311 Rub Rail - Cap Front Of Condenser Door [45959]  
3L-29-128M End Cap - Rubber Rub Rail  
3R-20-14 Washer - Nylon  
3J-33-50 Bolt - Mount Extrusion To Doors

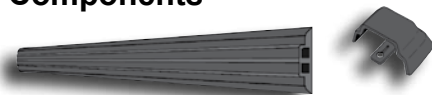
#### NOTES:

# MCI 102 DL3

## 2.5" Rub Rails & Components



### 2.5" Rubber Rub Rail & Components



Key	Part #	Description
1	3L-20-348	Rail Cap - Rear of Front W/H
2	3L-29-63	Rubber - Baggage Door
2	3L-29-65	Mounting Channel - Baggage Door
3	3L-20-53	Rubber - Rub Rail Between Doors
4	3L-20-310	Rub Rail - Cap, Front of Fuel Door
5	3L-20-311	Rub Rail - Cap, Front of Condenser Door
6	3L-20-68	Rubber - Rub Rail, Fuel Door
6	3L-20-38	Mounting Channel - Fuel Door
7	3L-20-69	Rubber - Battery Door
7	3L-20-39	Mounting Channel - Battery Door
8	3L-20-287	Rubber - Front of Rear Whlsg
8	3L-20-302	Mounting Channel - Front of Rear Whlsg
9	3L-20-288	Rubber - Rear of Rear Whlsg

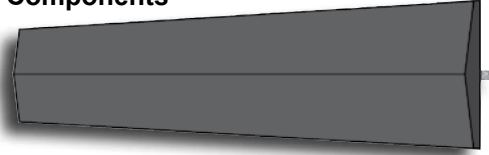
Key	Part #	Description
9	3L-20-301	Mounting Channel - Rear of Rear Whlsg
10	3L-20-289	Rubber - Rear Side Service Door (45959)
10	3L-20-300	Mounting Channel - Rear Side Service Door (45959)
10	3L-20-333	Rubber - Rear Side Service Door [45959]
10	3L-20-418	Mounting Channel - Rear Side Service Door [45959]
11	3L-20-196	Rubber - Rear of Rear Side Service Door w/Energy Bumper (45959)
11	3L-20-41	Mounting Channel - Rear of Rear Side Service Door (45959)
11	3L-20-311	Rubber - Rear of Rear Side Service Door w/Energy Bumper [45959]
11	3L-20-63	Mounting Channel - Rear of Rear Side Service Door w/Energy Bmp (45959)
n/i	3R-20-14	Flat Washer - Mount Extrusion to Doors (Nylon)
n/i	19-1-144	Screw - Rubber Caps (8-32x1 1/4)
n/i	3J-33-50	Bolt - Mount Extrusion to Doors
n/i	3L-29-128M	End Cap
n/i	19-13-173	Rivet - End Caps & Channels

n/i = not illustrated

# MCI 102 DL3

## Rub Rails, Sash Components

### 5" Rubber Rub Rail & Components



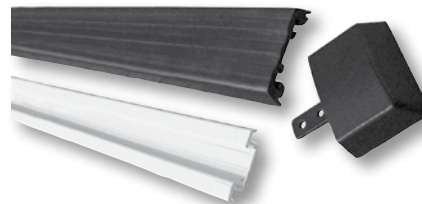
Key	Part #	Description
1	3L-20-332	Rub Rail Assy - Rear of Front Whlshg
1	3L-20-329	Mounting Channel - Rear of Front Whlshg
1	3L-20-330	Rubber - Rear of Front Whlshg
2	3L-29-56	Rub Rail Assy - Baggage Door
2	3L-29-58	Mounting Channel - Baggage Door
2	3L-29-59	Rubber - Baggage Door
3	3G-20-108	Cap - Rear of Condenser Door
3	3G-20-109	Cap - Between Baggage, Battery & Fuel Doors
4	3L-20-282	Rub Rail Assy - Front of Fuel Door
4	3L-20-295	Mounting Channel - Front of Fuel Door
4	3L-20-290	Rubber - Front of Fuel Door
5	3L-20-281	Rub Rail Assy - Front of Condenser Door
5	3L-20-296	Mounting Channel - Front of Condenser Door
5	3L-20-291	Rubber - Front of Cond Door
6	3L-31-168	Rub Rail Assy - Fuel Door
6	3L-31-170	Mounting Channel - Fuel Door
6	3L-31-173	Rubber - Fuel Door
7	3G-30-1	Rub Rail Assy - Battery Door
7	3G-30-2	Rubber - Battery Door
7	3G-30-3	Mounting Channel - Battery Door
8	3L-20-283	Rub Rail Assy - Front of Rear Whlshg
8	3L-20-297	Mounting Channel - Front of Rear Whlshg
8	3L-20-294	Rubber Only - Front of Rear Whlshg
9	3L-20-284	Rub Rail Assembly - Rear of Rear Whlshg
9	3L-20-299	Mounting Channel - Rear of Rear Whlshg
10	3L-20-285	Rub Rail Assy - Rear Side Service Door (45959)
10	3L-20-298	Mounting Channel - Rear Side Service Door (45959)
10	3L-20-292	Rubber - Rear Side Service Door (45959)
10	3L-20-441	Rub Rail Assy - Rear Side Service Door [45959]
10	3L-20-443	Mounting Channel - Rear Side Service Door [45959]
10	3L-20-442	Rubber - Rear Side Service Door [45959]
11	3G-20-11	Rub Rail Assy - Rear of Rear Side Service Dr (45959)
11	3G-20-13	Mounting Channel - Rr of Rr Side Service Door (45959)
11	3G-20-12	Rubber - Rear of Rear Side Service Door (45959)
11	3G-20-141	Rub Rail Assy - Rear of Rear Side Service Door w/Energy Bumper (45959)
11	3G-20-142	Rubber - Rear of Rear Side Service Door w/Energy Bumper (45959)
11	3G-20-143	Mounting Channel - Rear of Rear Side Service Door w/Energy Bumper (45959)
11	3L-20-281	Rub Rail Assy - Rear of Rear Side Service Door w/Energy Bumper [45959]
11	3L-20-296	Mounting Channel - Rear of Rear Side Service Door w/Energy Bumper [45959]
11	3L-20-291	Rubber - Rear of Rear Service Door w/Energy Bumper [45959]

### Components

n/i	3G-20-10	End Cap - Rubber Rub Rail
n/i	3G-29-18	End Cap Mounting Plate
n/i	19-13-173	Rivet - End Cap Plates
n/i	3J-33-50	Bolt - Mount Extrusion To Doors
n/i	3R-20-14	Washer - to Mount Channel

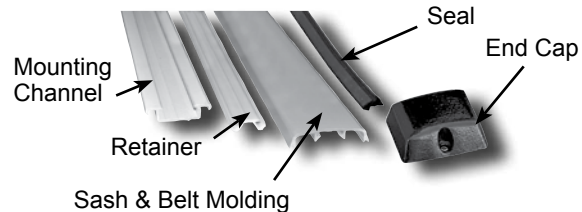
n/i = not illustrated

### Rubber Belt & Sash Moldings & Components



Key	Part #	Description
23	3L-20-77	Molding - Rubber Belt Rail LH/RH Engine Door
23	3L-20-46	Mounting Channel - Belt Rail, LH/RH Engine Door
24	3L-20-98	Molding - Belt & Sash 45" / Rubber
25	3L-20-47	Mounting Channel - LH Belt Rail at Rear Corner
26	3L-20-49	Mounting Channel - RH Belt Rail at Rear Corner
27	3L-20-97	Molding - Belt & Sash 466" / Rubber
24/27	3L-20-45	Mounting Channel - Belt & Sash 8'
28	3L-20-112M	End Cap for Sash & Belt Moldings
31	3L-20-18	Fascia Below Windshield / Fiberglass
32	3L-35-152	Trim Angle - Finishing Front LH Lower Corner At Front Bumper (Vertical)
33	3L-35-153	Trim Angle - Front RH Front Bumper (Vertical)
34	3L-20-405	Molding - Bottom Ext Cap at Radiator Door
35	3L-35-162	Trim Angle - Rear Of J-Box And Rear Of Entrance Door
36	3L-35-120	Trim Edge - Finishing Rear Of Entrance Door
37	3L-35-163	Trim Angle - Finishing Rear of Entrance Door Vertical Upper
38	3L-20-394	Molding - Finishing Rear of RH Rear Side Service Door
39	3L-35-336	Trim Angle - Exterior Trim, Rear J Box Door
40	3L-20-393	Molding - Finishing Rear of LH Rear Side Service Door

### Aluminum Belt & Sash Moldings & Components



Key	Part #	Description
23	3L-20-433	Molding - Aluminum Belt Rail LH/RH Engine Door
23	3L-20-46	Mounting Channel - Belt Rail LH/RH Engine Door
23	3L-20-437	Retainer - Aluminum Belt Rail LH/RH Engine Door
24/27	3L-20-431	Molding - Belt & Sash Rail
24/27	3L-20-45	Mounting Channel - Belt & Sash 8'
24/27	3L-20-435	Plastic Retainer - Belt & Sash Molding
24/27	3L-20-436	Retainer - Mount Aluminum LH/RH Sash & Belt Rail Front of Rear
24/27	3L-20-392	Seal - Belt & Sash Rail
25	3L-20-47	Mounting Channel - LH Belt Rail at Rear Corner
26	3L-20-49	Mounting Channel - RH Belt Rail at Rear Corner
28	3L-20-430M	End Cap - Belt & Sash Rail
31	3L-20-18	Fascia Below Windshield / Fiberglass
32	3L-35-152	Trim Angle - Finishing Front LH Lower Corner at Front Bumper (Vertical)
33	3L-35-153	Trim Angle - Finishing Front RH Lower Corner at Front Bumper (Vertical)
34	3L-20-405	Molding - Bottom Ext Cap at Radiator Door
35	3L-35-162	Trim Angle - Rear Of J-Box And Rear Of Entrance Door
36	3L-35-120	Trim Edge - Finishing Rear Of Entrance Door
37	3L-35-163	Trim Angle - Finishing Rear of Entrance Door Vertical Upper
38	3L-20-394	Molding - Finishing Rear of RH Rear Side Service Door
39	3L-35-336	Trim Angle - Exterior Trim, Rear J Box Door
40	3L-20-393	Molding - Finishing Rear of LH Rear Side Service Door

# PARTS LIST

Part #	Description	Part #	Description	Part #	Description
03-20-1023	End Cap	03-23-1017	Seal - Fender (100 Foot Roll)	07-07-6070CKP	Headlamp Conversion Kit - 7" Flat Glass (Paintable)
03-20-1027	Rub Rail Assy - Baggage Door	03-29-1078	Panel - Upper, Baggage Door	07-07-6070SLPL	Bezel - Headlamp LH use w/Sirius Lamp (Paintable)
03-20-1028	Channel - Mount, Rub Rail Baggage Door	03-29-1149	Panel - Baggage Door 47.625"	07-07-6070SLPR	Bezel - Headlamp RH use w/Sirius Lamp (Paintable)
03-20-1029	Cap - Rub Rail, Baggage Door	03-29-1696	Door Assy - Baggage w/Side Marker, Curb Side (Painted)	07-07-6070TLPL	Bezel - Headlamp LH use w/Truck-Lite Lamp (Paintable)
03-20-1034	Rub Rail Assy - Between Baggage Doors	03-29-1697	Door Assy - Baggage w/Side Marker, Road Side (Painted)	07-07-6070TLPR	Bezel - Headlamp RH use w/Truck-Lite Lamp (Paintable)
03-20-1035	Channel - Mount, Rub Rail	03-29-1698	Panel - Baggage Door w/Side Marker	19-01-1730	Capscrew - 3/8-16 UNC x 1-1/4 Hex Head, Stainless Steel
03-20-1036	Cap - Rub Rail	03-29-1699	Panel - Baggage Door w/Side Marker	19-02-0343	Washer - Fender, 3/8 Nom, Stainless Steel
03-20-1038	Cap - End, Molding	03-29-1714	Panel - Upper, Baggage Door WCL w/Lights	19-5-1	Dzus - Grommet
03-20-1039	End Cap	03-29-1715	Door Assy - Wheelchair Lift w/Smooth Panel	19-5-7	Dzus - Stud
03-20-1040	Rub Rail Assy - Wheelchair Door	03-29-1895	Panel Assy - Baggage Door Long	19-5-9	Dzus - Spring
03-20-1041	Channel - Mount, Rub Rail	03-29-1896	Panel Assy - Baggage Door Short	19-7-48	Yoke - Handle Attaching
03-20-1042	Cap - Rub Rail	03-29-2001	Door Assy - Baggage w/Wheelchair Lift w/Marker Light (Painted)	24-51-0049	Seal - 1/2 x 5/8D EPDM (100 FT Roll)
03-20-1043	Rub Rail Assy - Small Baggage Door	03-31-2076	Panel Assy - Service Door RH, Bosch / Fiberglass	3C-29-178	Hinge Bracket
03-20-1044	Bracket	03-31-2428	Panel - Ext.	3F-29-107	Bracket - Latch, Casting, LH, Lower Door Lock
03-20-1045	Rub Rail Assy - Front of Fuel Door	03-31-2432M	Rub Rail Assy - Entrance Door RH / Fiberglass	3F-29-108	Bracket - Latch, Casting, RH, Lower Door Lock
03-20-1047	Rub Rail Assy - Rear of Front Wheel	03-31-2433	Frame Assy - Front Side Service Door	3F-29-109	Casting - Lower Lock, LH
03-20-1048	Channel - Mount, Rub Rail	03-31-2439	Hinge Assy	3F-29-110	Casting - Lower Lock, RH
03-20-1053	Cap - Rub Rail	03-31-2450	Plate Assy	3F-29-168	Panel - Upper, Baggage Door
03-20-1057	Rub Rail Assy - Service Door, Engine	03-31-2520	Panel - Ext. Door RH	3F-29-169	Panel - Lower, Baggage Door
03-20-1062	Channel - Mount, Rub Rail, Battery Door	03-31-2521	Panel - Rear Side Service Door	3F-29-186	Bearing - Cap, Swing Tube
03-20-1063	Cap - Rub Rail, Battery Door	03-31-2863	Door Assy - Engine w/LED LP Light LH (Stainless)	3F-29-187	Bearing - Base, Swing Tube
03-20-1067	Channel - Mount, Rub Rail, Fuel Door	03-31-2989	Door Assy - Front Side Service (Aluminum)	3F-29-216	Rod - Locking, Galvanized
03-20-1068	Cap - Rub Rail, Fuel Door	03-31-3041	Door S/A - Front Side Service Door	3F-29-219	Bumper - Baggage Door Assy
03-20-1070	Rub Rail Assy - Fuel Door	03-31-3043	Door Assy - Front Side Service	3F-29-220	Clamp - Mounting, Locking Rod
03-20-1071	Rub Rail Assy - Battery Door	03-31-3164	Door Assy - Engine w/LED LP Light LH (Painted)	3F-29-221	Stop - Locking Rod, Baggage Door
03-20-1072	End Cap	03-32-1697	Frame S/A - Entrance Door	3F-29-257	Bearing - Base, Lock Rod
03-20-1088	Fascia Below Windshield / Fiberglass	03-32-1699	Panel - Interior Sedan Door, Painted	3F-29-258	Bearing - Cap, Lock Rod
03-20-1091	Rub Rail Assy - Front of Rear WhlHsg	03-32-1701	Door Assy - Entrance	3F-29-304	Panel - Baggage Door
03-20-1092	Channel - Mount, Rub Rail	03-32-1705	Kick Panel - Side Entrance Door	3F-35-205	Panel - Upper, Between Baggage Door
03-20-1093	Cap - Rub Rail	03-33-1628	Plate Assy - Head Light Mounting, LH	3F-35-354	Panel - Lower, Between Baggage Door
03-20-1096	Rub Rail Assy - Rear of Rear WhlHsg	03-33-1629	Plate Assy - Head Light Mounting, RH	3F-35-395	Panel - Upper, Front of RH Rear
03-20-1097	Channel - Mount, Rub Rail	03-33-1630	Plate - Headlight Closeout	3F-35-396	Panel - Lower, Front of RH Rear
03-20-1098	Cap - Rub Rail	03-33-1631	Plate - Headlight Closeout	3G-20-10	End Cap - 5" Rubber Rub Rail
03-20-1100	Rub Rail Assy - Rear Side Service Door, Engine	03-33-1632	Plate - Floating Assy LH	3G-20-11	Rub Rail Assy - 5" Rubber, Rear of Rear Side Service Door
03-20-1101	Channel - Mount, Rub Rail, Rear Side Service Door	03-33-1649	Plate - Floating Assy RH	3G-20-12	Rubber - 5" Rub Rail, Rear of Rear Side Service Door
03-20-1102	Cap - Rub Rail, Rear Side Service Door	03-33-1684	Bracket Assy - Headlight RH	3G-20-13	Mounting Channel - 5" Rub Rail, Rear of Rear Side Service Door
03-20-1105	Rub Rail Assy - Wheelchair Cassette Door	03-33-1685	Bracket Assy - Headlight LH	3G-20-17	Rub Rail Assy - 5" Rear of Condensor Door
03-20-1134	Channel - Mount, Rub Rail	03-33-1686	Spring - Headlight, Diagonal	3G-20-108	Rub Rail - 5" Rubber, Rear of Fuel Door
03-20-1136	Cap - Rub Rail	03-33-1687	Spring - Headlight, Large	3G-20-109	Rub Rail - 5" Rubber, Rear of Battery Door
03-20-1137	Rub Rail Assy - Rear of Rear Service Door	03-33-1689	Foam - Closeout, Headlight	3G-20-141	Rub Rail Assy - 5" Rubber, Rear of Rear Side Service Door w/Energy Abs Bumper
03-20-1138	Cap - 5" Rubber	03-33-1691	Closeout Assy - Front Cap	3G-20-142	Rubber - 5" Rub Rail, Rear of Rear Side Service Door w/Energy Abs Bumper
03-20-1141	Rub Rail Assy - 5" Rubber	03-33-1692	Closeout - Foam Insulation	3G-20-143	Mounting Channel S/A - 5" Rub Rail, Rear of Rear Side Service Door w/Energy Abs Bumper
03-20-1142	Cap - 5" Rubber	03-33-1693	Cover - Lower, Headlight LH	3G-20-347	Mounting Channel - Entrance Door
03-20-1143	Channel - 5" Rub Rail	03-33-1696	Cover Assy - Headlight RH	3G-20-350	Mounting Channel - Front Service Door
03-20-1145	Rub Rail Assy - 5" Rubber	03-33-1743	Clamp Assy	3G-21-1	Bumperette Assy - Rubber
03-20-1154	Channel - Rub Rail	03-35-1843	Bracket - Spacer	3G-21-9SP	Bumperette - LH w/Rubber Welded
03-20-1155	Channel - Rub Rail	03-35-1845	Panel Assy - Lower, Front Ext.	3G-21-10	Bumperette Assy - LH Rear
03-20-1156	Cap - 5" Rubber	03-35-1919	Fender Assy - Rear RH	3G-21-12SP	Bumperette - RH w/Rubber Welded
03-20-1157	Cap - 5" Rubber	03-35-1957	Fender Assy - RH Front / Fiberglass	3G-21-13	Bumperette S/A
03-20-1159	Rub Rail Assy - 5" Rear of LH Rear WhlHsg	03-35-1958	Fender Assy - LH Front / Fiberglass	3G-21-79	Closing Plate LH/RH
03-20-1163	Rub Rail Assy	03-35-2074	Fender Assy - Rear LH	3G-21-82	Bumperette - Plain w/Slots LH/RH
03-21-1276M	Rub Rail Assy - Service Door LH / Fiberglass	03-35-2433	Panel Assy - Tail Light, RH	3G-29-2	Rub Rail Assy - 5" Rubber, Baggage Door
03-21-1332	Skin Assy - Front Bumper	03-35-2434	Use Part # 03-35-2834	3G-29-3	Rubber - 5" Rub Rail, Baggage Door
03-21-1355	Panel - Closing, RH	03-35-1259	Bracket - Cap Spacing, LH	3G-29-4	Mounting Channel - Baggage Door w/5" Rub Rail
03-21-1356	Panel - Closing, LH	03-35-6476	Bracket - Front Cap	3G-29-15	Panel - Inner, Baggage Door
03-21-1388	Bumper Assy - Front	07-07-1178	Fog - Lamp Assy		
03-21-1390	Bumper Assy - Rear w/Rubber Bumper	07-07-6065GLS	Headlamp - 7" Round Glass w/HB2 Bulb, LH		
03-21-1391	Blade - Rear w/Rubber Mount	07-07-6069GLS	Headlamp - 7" Round Glass w/HB2 Bulb, RH		



# PARTS LIST

Part #	Description	Part #	Description	Part #	Description
3G-29-18	End Cap Mounting Plate	3J-31-287	Panel - RH Rear Side Service	3L-20-287	Rubber - 2.5" Rub Rail, Front of Rear Whlsg
3G-29-24	Plate - Baggage Door Nut Retaining	3J-31-289	Screen & Frame S/A - Lower Section	3L-20-288	Rubber - 2.5" Rub Rail, Rear of Rear Whlsg
3G-29-63	Panel - Lower, Baggage Door	3J-32-42	Panel - Ext. Lower Section	3L-20-289	Rubber - 2.5" Rub Rail, Rear Side Service Door
3G-29-64	Panel - Lower, Baggage Door	3J-32-54	Kick Panel - Interior Door	3L-20-290	Rubber - 5" Rub Rail, Front of Fuel Door
3G-30-1	Rub Rail Assy - 5" Rubber, Battery Door	3J-32-94	Lock - Body Assy	3L-20-291	Rubber - 5" Rub Rail, Front of Condenser Door
3G-30-2	Rubber - 5" Rub Rail, Battery Door	3J-32-116	Panel - Reinforce Kick Panel	3L-20-292	Rubber - 5" Rub Rail, Rear Side Service Door
3G-30-3	Mounting Channel - Battery Door w/5" Rub Rail	3J-32-157	Kick Panel S/A - Entrance Door Interior Lower	3L-20-293	Rubber - 5" Rub Rail, Rear of Rear Whlsg
3G-30-8	Panel - Battery Door	3J-32-221	Panel - Upper, Sedan Entrance w/Lock	3L-20-294	Rubber - 5" Rub Rail, Front of Rear Whlsg
3G-31-6	Rub Rail Assy - 5" Rubber, Rear Side Service	3J-32-222-0001	Panel S/A - Interior Door	3L-20-295	Mounting Channel - 5" Rub Rail, Fuel Door
3G-31-12	Rubber - 5" Rub Rail, Fuel Door	3J-32-329	Frame S/A - Entrance Door	3L-20-296	Mounting Channel - 5" Rub Rail, Front of Condenser Door
3G-31-27	Hinge - Front Edge of Door	3J-33-50	Bolt - Mount Extrusion to Doors (25/Pack)	3L-20-297	Mounting Channel - 5" Rub Rail, Front of Rear Whlsg
3G-31-28	Door Assy - Fuel Filler w/Hinge (Locking)	3J-33-51	Bolt - Mount BUMPERETTE LH/RH, 3/8-16 x 2-1/4 (10/Pack)	3L-20-298	Mounting Channel - 5" Rub Rail, Rear Side Service Door
3G-31-31	Panel - Lower, Fuel Door	3J-35-56	Panel - Front of LH Front Whlsg	3L-20-299	Mounting Channel - 5" Rub Rail, Rear of Rear Whlsg
3G-31-35	Panel - Front Side Service Door	3J-35-66	Panel - Above LH Front Whlsg	3L-20-300	Extrusion - Mount 2.5" Rub Rail, Rear Side Service Door
3G-32-12	Panel - Lower, Sedan Entrance Door	3J-35-84	Screen - Radiator LH/RH	3L-20-301	Mounting Channel - 2.5" Rub Rail, Rear of Rear Whlsg
3G-32-45	Lock Body Assy	3J-35-95	Panel - Tail Light Mounting LH	3L-20-302	Mounting Channel - 2.5" Rub Rail, Front of Rear Whlsg
3G-35-22	Panel - Front of LH Front Whlsg	3J-35-96	Panel - Tail Light Mounting RH	3L-20-310	Rub Rail - 2.5" Rubber, Front of Fuel Door
3G-35-24	Panel - Rear of LH Front Whlsg	3J-35-97	Panel - Above Front Side Service	3L-20-311	Rub Rail - 2.5" Cap, Front of Condenser Door
3G-35-27	Panel - Between Baggage Door	3J-35-100	Panel - Rear of LH Rear Whlsg	3L-20-329	Mounting Channel - 5" Rub Rail
3G-35-29	Panel - Lower, Rear of LH Rear Side Service	3J-35-103	Panel - Front of RH Rear Whlsg	3L-20-330	Rubber - 5" Rub Rail, Rear of Front Whlsg
3G-35-37	Panel - Lower, Rear of RH Rear Side Service	3J-35-291	Panel S/A - Front of RH Front Whlsg	3L-20-332	Rub Rail Assy - 5" Rubber, Rear of Front Whlsg
3G-35-54	Panel - Center Below Windshield	3J-35-292	Panel - Front of Whlsg w/Cut-Out	3L-20-333	Rubber - 2.5" Rub Rail, Rear Side Service
3G-35-68	Panel - Upper, Rear of RH Rear Side Service Door	3J-35-293	Box S/A - Mount Entrance Door	3L-20-348	Rail Cap - Rear of Front Whlsg
3G-35-69	Panel - Upper, Rear of LH Rear Side Service Door	3J-35-297	Door S/A - Exterior Entrance	3L-20-392	Seal - Belt & Sash Rail (500 Foot Roll)
3G-35-82	Panel - Front of RH Rear Whlsg	3K-21-3	Bumper Assy - Rear w/Rubber Bumper	3L-20-393	Molding - Finishing Rear of LH Rear Side Service Door
3G-35-83	Panel - Lower, Rear of LH Rear Side Service Door	3K-21-4	Blade - Rear Bumper w/Holes	3L-20-394	Molding - Finishing Rear of RH Rear Side Service Door
3G-35-84	Panel - Lower, Rear of RH Rear Side Service Door	3K-21-5	Retainer & Rub Rail Assy - w/Stud Strip	3L-20-405	Molding - Bottom Ext. Cap at Radiator Door & Louvered Panels
3G-35-185	Panel - LH Front Corner Below Windshield	3K-21-7	Panel - Closing, Rear Bumper w/Energy ABS Bumper / Fiberglass	3L-20-418	Mounting Channel - 2.5" Rub Rail, Rear Side Service
3G-35-210	Panel - Below Radiator Door LH/RH	3K-31-17	Bar - Tail Light Mount	3L-20-428	Rub Rail Assy - 5" Rubber, Small Baggage Door
3G-35-211	Panel - Below Radiator Screen	3K-31-124	Panel Assy - Tail Light LH/RH	3L-20-430M197	End Cap - Belt & Sash Molding
3G-35-279	Panel - Rear of LH Front Whlsg	3K-35-14	Panel - Upper, Rear of RH Rear Side Service	3L-20-431	Molding - Belt & Sash Rail
3G-35-397	Panel - Front of RH Rear Whlsg	3K-35-27	Panel - Upper, Rear of RH Rear Side Service Door w/Imm Heater	3L-20-433	Molding - Aluminum Belt Rail LH/RH Engine Door
3G-35-398	Panel - Front of LH Rear Whlsg	3L-1-307	Panel S/A - Lower LH Switch w/o Joystick	3L-20-435	Plastic Retainer - Belt & Sash Molding
3J-20-23	Molding - Belt & Sash 196" / Alum	3L-20-18	Fascia Below Windshield / Fiberglass	3L-20-436	Retainer - Mount Aluminum LH/RH Sash & Belt Rail Front or Rear
3J-29-34	Door Assy - Baggage w/Aluminum Rub Rail	3L-20-38	Mounting Channel - 2.5" Rub Rail, Fuel Door	3L-20-437	Retainer - Aluminum Belt Rail LH/RH Engine Door
3J-30-6	Plate & Bar S/A - Pivot Battery Door	3L-20-39	Mounting Channel - 2.5" Rub Rail, Battery Door	3L-20-441	Rub Rail Assy - 5" Rubber, Rear Side Service
3J-30-15	Lock Body, Catch Complete	3L-20-40	Mounting Channel - 2.5" Rub Rail, Rear Side Service	3L-20-442	Rubber - 5" Rub Rail, Rear Side Service Door
3J-30-18	Latch Assy - Rear Side Service & Engine Access	3L-20-41	Extrusion - Mount 2.5" Rub Rail, Rear of Rear Side Service Door	3L-20-443	Mounting Channel - 5" Rub Rail, Rear Side Service Door
3J-30-26	Plate & Bar S/A - Battery Door	3L-20-45	Mounting Channel - Belt & Sash 8'	3L-20-461	Extrusion - Mount Belt Rail LH/RH Rear
3J-30-30	Plate - Battery Door Seal Top	3L-20-46	Mounting Channel - Belt Rail LH/RH Engine Door	3L-20-462	Molding - Rubber Belt Rail Sidewall
3J-30-32	Seal - Rubber, Battery & Central Heat	3L-20-47	Mounting Channel - LH Belt Rail at Rear Corner	3L-20-541	Plate - Wiper
3J-30-33	Seal - Rubber Battery Door Bottom	3L-20-49	Mounting Channel - RH Belt Rail at Rear Corner	3L-21-160	Trim - Closing LH/RH Rear Lower Corner
3J-30-45	Bolt - End, Door Catch	3L-20-53	Rubber - 2.5" Rub Rail Between Doors	3L-21-174	Closing Panel - Top of Rear Energy Abs Bumper
3J-31-155	Screen & Frame S/A - Upper Section (Non-Painted)	3L-20-68	Rubber - 2.5" Rub Rail, Fuel Door	3L-21-176	Trim - Closing LH Rear Corners at Bumper
3J-31-184	Door Assy - RH Side Service w/Alum Rub Rail	3L-20-69	Rubber - 2.5" Rub Rail, Battery Door	3L-21-177	Trim - Closing RH Rear Corners at Bumper
3J-31-190	Bar - Locking Lower	3L-20-70	Rubber - 2.5" Rub Rail, Rear Side Service	3L-21-178	Closing Panel - Top of Rear Energy Abs Bumper
3J-31-191	Door Assy - Engine RH (Stainless)	3L-20-71	Rubber - 2.5" Rub Rail, Rear of Rear Side Service	3L-23-57-0001	Fender - Front / Fiberglass
3J-31-194	Panel - Lower, RH Rear Engine Door	3L-20-76	Rubber - Belt & Sash, 40' Roll	3L-23-58-0001	Fender - Rear / Fiberglass
3J-31-195	Panel - Upper, RH Rear Engine Door	3L-20-77	Molding - Rubber Belt Rail LH/RH Engine Door	3L-29-21	Seal - Baggage Door
3J-31-197	Bar - Locking Lower	3L-20-85	Wiper Motor Cover / Fiberglass	3L-29-25	Extrusion - Baggage Door Bottom
3J-31-258	Door S/A - Front Side Service (Less Rub Rail)	3L-20-97	Molding - Belt & Sash 466" / Rubber	3L-29-30	Panel - Inner, Baggage Door
3J-31-259	Frame S/A - Front Side Service Door	3L-20-98	Molding - Belt & Sash 45' / Rubber	3L-29-31	Panel - Ext. Lower, Baggage Door
3J-31-263	Panel - Front Side Service	3L-20-112M	End Cap - Belt & Sash Molding	3L-29-32	Panel - Ext. Upper, Baggage Door
3J-31-264	Door S/A - Front Side Service (Less Lock Tumbler)	3L-20-281	Rub Rail Assy - 5" Rubber, Front of Condenser Door	3L-29-36	Pocket S/A - Spot-weld, Baggage Door
3J-31-265	Door S/A - Front Side Service (Less Rub Rail)	3L-20-282	Rub Rail Assy - 5" Rubber, Front of Fuel Door	3L-29-55	Door Assy - Baggage w/Rubber Rub Rail / Painted
3J-31-266	Frame S/A - Front Side Service Door	3L-20-283	Rub Rail Assy - 5" Rubber, Front of Rear Whlsg	3L-29-56	Rub Rail Assy - 5" Rubber, Baggage Door
3J-31-267	Panel - Front Side Service Door	3L-20-284	Rub Rail Assy - 5" Rubber, Rear of Rear Whlsg	3L-29-58	Mounting Channel - 5" Rub Rail, Baggage Door
3J-31-285	Panel - LH Rear Side Service	3L-20-285	Rub Rail Assy - Rear Side Service Door	3L-29-59	Rubber - 5" Rub Rail, Baggage Door (Cut to 55.250" -/+ .160)

# PARTS LIST

Part #	Description	Part #	Description	Part #	Description
3L-29-61	Pocket Assy - Complete	3L-29-761	Door Assy - Baggage Painted	3L-30-328	Door Assy - Battery & C/H Filter w/Fixed Panel
3L-29-63	Rubber - 2.5" Rub Rail, Baggage Door	3L-29-762	Door Assy - Baggage RH #2 w/Turn Lamp	3L-30-329	Door Assy - Battery w/Key Lock & Fixed Panel
3L-29-65	Mounting Channel - 2.5" Rub Rail, Baggage Door	3L-29-763	Door Assy - Baggage Large Bay #2 LH w/Turn Lamp Painted	3L-30-330	Door Assy - Battery w/Lock/Lock & Hinged Panel
3L-29-68	Panel - Upper, Baggage Door w/Lock	3L-29-764	Door Assy - Small Baggage	3L-30-339	Panel - Battery Door Fluted w/Large Access Door & Key Lock Cut-Outs
3L-29-69	Door Assy - Baggage Large Bay #1 or #3 w/Key Lock (Painted)	3L-29-766	Door Assy - Large Baggage w/Fluted Panels	3L-30-370	Door Assy - Battery w/Large Access Door & Fixed Panels (see 3L-30-374)
3L-29-70	Handle Only - Baggage Door	3L-29-767	Door Assy - Baggage w/Turn Light RH (Stainless)	3L-30-371	Door Assy - Battery & C/H Compartment w/Latch/Lock & Fixed Panel
3L-29-71	Handle Assy - Baggage Door, Complete	3L-29-768	Door Assy - Baggage Large Bay #2 LH Less Cylinder w/Turn Lamp / Stainless	3L-30-372	Door Assy - Battery & C/H Compartment w/Lock/Lock & Fixed Panel
3L-29-73	Door Assy - Baggage Large Bay #1 or 3	3L-29-769	Door Assy - Small Baggage	3L-30-373	Door Assy - Battery & C/H w/Key Lock & Fixed Panel
3L-29-74	Panel - Upper, Baggage Door	3L-29-1009	Panel - Lower, Baggage Door w/Wheel Chair Lift	3L-30-374	Door Assy - Battery w/Large Access Door w/o Lock
3L-29-75	Panel - Lower, Baggage Door	3L-29-1039	Door Assy - #2 RH Wheelchair Lift	3L-30-375	Door Assy - Battery & C/H w/Lock/Lock & Hinged Panel
3L-29-81	Door Assy - Baggage Large Bay #1 or 3 w/Key Lock	3L-29-1076	Door Assy - Lower (Stainless)	3L-30-376	Door Assy - Battery & C/H w/Lock/Lock & Hinged Panel
3L-29-82	Panel - Upper, Baggage Door w/Lock	3L-29-1093	Panel - Upper, Baggage Door WCL w/Lights (Stainless)	3L-30-377	Door Assy - Battery & C/H w/Key Lock & Hinged Panel
3L-29-89	Panel - Upper Ext. Baggage Door LH w/Dock Light Cut-Out	3L-29-1110	Housing - Wheelchair Lift Curb Light	3L-30-387	Door Assy - Battery & C/H Filter w/Fixed Panel
3L-29-93	Panel - Upper Ext. Baggage Door RH w/Dock Light Cut-Out	3L-29-1130	Panel - Lower, Baggage	3L-30-390	Door Assy - Battery & C/H w/Key Lock & Fixed Panel
3L-29-115	Panel - Fluted Upper Ext. Baggage Door RH w/Lock & Turn Lamp Cut-Outs	3L-29-1134A	Door Assy - Lower, Wheelchair Lift / Alum	3L-30-391	Door Assy - Battery & C/H Filter w/Hinged Panel
3L-29-116	Panel - Fluted Upper Ext. Baggage Door w/Lock & Turn Lamp Cut-Outs	3L-29-1167	Frame - Baggage Door, Painted	3L-30-393	Door Assy - Battery & C/H w/Lock/Lock & Hinged Panel
3L-29-117	Door Assy - Baggage #2 LH w/Key Lock & Turn Lamp (Stainless)	3L-29-1203	Panel - Upper, Ext.	3L-30-394	Door Assy - Battery & C/H w/Key Lock & Hinged Panel
3L-29-118	Door Assy - Baggage #2 RH w/Key Lock & Turn Lamp (Stainless)	3L-29-1204	Door Assy - Baggage #1 RH w/Curb Light	3L-30-395	Panel - Battery Door w/Large Access Door
3L-29-128M	End Cap - 2.5" Rub Rail	3L-29-1212	Panel - Upper, Baggage Door	3L-30-396	Panel - Battery Door w/Large Access & Lock
3L-29-130	Panel - Fluted Upper Ext. Baggage Door LH w/Turn Lamp Cut-Out	3L-29-1214	Door Assy - Baggage w/Wheelchair Lift	3L-30-399	Panel - Battery Door Fluted w/Large Access & Key Lock
3L-29-131	Panel - Fluted Upper Ext. Baggage Door RH	3L-30-5	Panel - Battery Door	3L-30-400	Panel - Battery Door Fluted w/Large Access Door Cut-Out
3L-29-132	Door Assy - Baggage Large Bay #2 LH Less Cylinder w/Turn Lamp / Stainless	3L-30-6	Frame S/A - Battery, Welded	3L-30-401	Door Assy - Painted w/Large Switch Access
3L-29-140	Panel - Upper Ext. Door LH w/Dock Light & Lock Cut-Outs	3L-30-10	Hinge - Stainless Steel, Battery Door	3L-30-402	Door Assy - Battery, Hinged (Painted)
3L-29-141	Panel - Upper Ext. Baggage Door RH w/Dock Light & Lock Cut-Outs	3L-30-12	Panel - Ext. Battery Door	3L-30-403	Door Assy - Switch Access Non-Locking
3L-29-147	Door Assy - Baggage Bay #2 LH w/Turn Lamp	3L-30-48	Door S/A - Battery, Riveted	3L-30-404	Door Assy - Switch Access w/Key Lock
3L-29-148	Door Assy - Baggage #2 RH w/Turn Lamp	3L-30-50	Panel - Battery Door	3L-30-405	Door - Switch Access (10-1/2" Long)
3L-29-149	Panel - Upper, Baggage Door LH	3L-30-54	Door S/A - Riveted Assy	3L-30-406	Spacer - Access Door
3L-29-150	Panel - Upper, Baggage Door RH w/Light	3L-30-55	Panel - Ext. Battery w/Key Lock	3L-30-407	Door - Switch Access (10-1/2" Long)
3L-29-211	Panel - Upper Ext. Baggage Door LH w/Lock & Turn Lamp Cut-Outs	3L-30-61	Door Assy - Battery	3L-30-423R58	Panel - Lower, Inner
3L-29-212	Panel - Upper Ext. Baggage Door RH w/Dock Light & Key Lock Cut-Out	3L-30-62	Door Assy - Battery & C/H Filter Compartment	3L-30-424R58	Panel - Upper, Inner
3L-29-221	Door Assy - Baggage #2 LH w/Key Lock & Turn Lamp	3L-30-64	Door Assy - Battery & C/H (Less Tumbler Assy)	3L-30-549	Door Assy - Battery, Fluted w/Key Lock, Sliding
3L-29-222	Door Assy - Baggage #2 RH w/Key Lock & Turn Lamp	3L-30-67	Door Assy - Battery & C/H (Less Lock Tumbler)	3L-30-552	Door Assy - Battery, Hinged Sliding Door (Painted)
3L-29-298	Panel - Upper, Small Baggage Door	3L-30-82	Hinge Assy - LH, Interior Access Cover	3L-31-5	Door Assy - Condenser
3L-29-302	Panel - Lower, Small Baggage Door	3L-30-83	Hinge Assy - RH, Interior Access Cover	3L-31-6	Screen S/A - Lower
3L-29-372	Door Assy - Baggage #1 LH w/Dock Light (Painted)	3L-30-84	Latch Assy - Interior Access Cover	3L-31-7	Screen S/A - Upper
3L-29-373	Door Assy - Baggage #1 RH w/Dock Light (Painted)	3L-30-99	Frame Assy - Battery & C/H Door	3L-31-8	Handle S/A - Condenser Door
3L-29-374	Door Assy - Baggage #1 LH w/Dock Light & Key Lock (Painted)	3L-30-238	Frame Assy - Battery Door	3L-31-41	Door S/A - Front Side Service
3L-29-375	Door Assy - Baggage #1 RH w/Dock Light & Key Lock (Painted)	3L-30-249	Door - Switch Access (8-5/8" Long)	3L-31-43	Frame S/A - Front Side Service Welded
3L-29-376	Door Assy - Baggage #1 LH w/Dock Light (Stainless)	3L-30-251	Door Assy - Switch Access Non-Locking	3L-31-44	Panel - Ext., Door / Alum
3L-29-377	Door Assy - Baggage #1 RH w/Dock Light (Stainless)	3L-30-257	Panel - Battery Door w/Switch Access & Lock	3L-31-47	Door S/A - Front Side Service (Less Rub Rail)
3L-29-378	Door Assy - Baggage #1 LH w/Dock Light & Key Lock (Stainless)	3L-30-263	Door Assy - Battery w/Key Lock & Fixed Panel	3L-31-48	Door S/A - Front Side Service Welded w/Paint
3L-29-379	Door Assy - Baggage #1 RH w/Dock Light & Key Lock (Stainless)	3L-30-271	Panel - Battery Door w/Switch Access & Lock	3L-31-49	Frame S/A - Front Side Service Door
3L-29-382	Panel - Fluted Upper Ext. Baggage Door LH w/Dock Light Cut-Out	3L-30-272	Panel - Ext. Battery Door w/Access Door Cut-Out	3L-31-50	Panel - Ext. Service Door
3L-29-383	Panel - Fluted Upper Ext. Baggage Door RH w/Dock Light Cut-Out	3L-30-273	Panel - Battery Door w/Switch Access	3L-31-51	Panel Assy - Tail Light RH
3L-29-534	Hinge - Vertical, Baggage Door	3L-30-274	Door Assy - Battery & C/H w/Fixed Panel	3L-31-52	Panel - Tail Light RH
3L-29-535	Panel - Upper, Baggage RH (Stainless)	3L-30-277	Door Assy - Battery w/Key Lock & Fixed Panel	3L-31-79	Panel - Tail Light LH
3L-29-536	Panel - Lower, Baggage RH (Stainless)	3L-30-278	Door Assy - Battery & C/H Filter w/Fixed Panel	3L-31-80	Panel Assy - Tail Light LH
3L-29-537	Door Assy - Baggage #2 RH w/Wheelchair Lift (Stainless)	3L-30-280	Door - Switch Access (8-5/8" Long)	3L-31-111	Door Assy - Condenser w/5" Rub Rail (Painted)
3L-29-538	Door Assy - Baggage #2 RH w/Wheelchair Lift (Painted)	3L-30-281	Door S/A - Switch Access Locking	3L-31-168	Rail Assy - 5" Rubber, Fuel Door
		3L-30-285	Rub Rail Assy - Rear Side Service Door	3L-31-170	Channel - Mount 5" Rub Rail, Fuel Door
		3L-30-294	Door Assy - Switch Access w/Key Lock	3L-31-173	Rubber - 5" Rub Rail, Fuel Door
		3L-30-297	Door Assy - Switch Access w/Simple (Non-Lock Body) Key Lock	3L-31-207	Door Assy - Front Side Service (Less Lock Tumbler)
		3L-30-299	Door Assy - Battery & C/H w/Lock/Lock & Fixed Panel	3L-31-220	Panel - Front Junction Box Door
		3L-30-323	Door Assy - Battery & C/H w/Lock/Lock & Fixed Panel	3L-31-223	Bracket S/A
		3L-30-324	Door Assy - Battery & C/H Filter w/Hinged Panel		
		3L-30-325	Door Assy - Battery w/Key Lock & Hinged Panel		
		3L-30-327	Door Assy - Battery & C/H w/Lock/Lock & Fixed Panel		

# PARTS LIST

Part #	Description	Part #	Description	Part #	Description
3L-31-230	Panel - Blower Door w/Light Cut-Out	3L-31-757	Door Assy - Front Junction Box Access (Stainless)	3L-31-1224	Panel - Lower, RH Side Service Door, Interior
3L-31-452	Door Assy - Condenser w/5" Rub Rail (Non-Painted)	3L-31-802	Strap - Pull Down, 2" Nylon Web	3L-31-1225	Panel - Lower, LH Side Service Door, Interior
3L-31-472	Door Assy - Engine RH	3L-31-819	Door Assy - Rear Engine Access RH / Stainless	3L-31-1228	Panel - RH Rear Side Service Door
3L-31-473	Door Assy - Rear Engine LH	3L-31-820	Door Assy - Rear Engine Access LH	3L-31-1229	Panel - LH Rear Side Service Door
3L-31-474	Panel - Engine Door RH	3L-31-821	Door Assy - Rear Engine Access RH (No Upper Paint)	3L-31-1247	Panel - Fluted Ext. Rear Side Service Door RH
3L-31-475	Panel - LH Engine Door	3L-31-822	Door Assy - Rear Engine Access LH (No Upper Paint)	3L-31-1248	Panel - Fluted Ext. Rear Side Service Door LH
3L-31-476	Frame - Interior Engine Door RH	3L-31-823	Panel - Upper, LH Engine Door	3L-31-1250	Bracket - Door Support RH
3L-31-477	Frame - Rear Engine Door LH	3L-31-824	Panel - Upper, LH Engine Door	3L-31-1251	Door Assy - RH Rear Side Service
3L-31-481	Bar - Locking Upper	3L-31-847	Door Assy - Rear Engine Access RH w/Key Lock / Stainless	3L-31-1252	Door Assy - LH Rear Side Service
3L-31-484	Panel - Upper, RH Engine Door	3L-31-848	Panel - Flat Upper Ext. Door RH w/Lock (Painted)	3L-31-1253	Panel - Satellite LH
3L-31-485	Panel - Upper, LH Engine Door	3L-31-853	Panel - Upper, Fuel Door	3L-31-1254	Panel - Satellite RH
3L-31-487	Frame - Interior Engine Door LH	3L-31-854	Panel - Lower, Fuel Door	3L-31-1255	Door Assy - LH Satellite
3L-31-548	Door Assy - Front Side Service w/o Bumper Extension (Stainless)	3L-31-868	Door Assy - Fuel Filler w/Hinge (Locking)	3L-31-1256	Door Assy - RH Satellite
3L-31-549	Door Assy - Front Side Service w/Key Lock (Stainless)	3L-31-874	Frame Assy - Fuel Compartment	3L-31-1259	Panel - RH Rear Side Service Door w/Light
3L-31-620	Door Assy - Rear Engine Access RH w/Key Lock (Painted)	3L-31-875	Door Assy - Fuel Compartment w/Locking Filler Door	3L-31-1260	Panel - Service Door LH (Painted)
3L-31-621	Panel - RH Engine Door w/Lock	3L-31-882	Door Assy - Fuel Filler	3L-31-1265	Door Assy - Rear Side Service w/Dock Light RH (Painted)
3L-31-670	Panel - Lower Interior, Rear Side Service LH	3L-31-885	Door Assy - Fuel Compartment	3L-31-1284	Panel - Flat Upper Ext. Engine Door RH (Painted)
3L-31-671	Panel - Lower Interior Rear Side Service RH	3L-31-897	Door Assy - Fuel Filler w/Hinge	3L-31-1285	Panel - Flat Lower Ext. Engine Door RH
3L-31-678	Panel - LH Rear Side Service Door	3L-31-899	Panel - Lower, Fuel Door	3L-31-1286	Panel - Flat Upper Ext. Engine Door LH (Painted)
3L-31-679	Panel - RH Rear Side Service Door	3L-31-900	Hinge - Mount Tail Light Door Assy	3L-31-1287	Panel - Flat Lower Ext. Engine Door LH
3L-31-680	Bar - Locking Upper	3L-31-900	Panel - Ext. Upper Fuel Compartment	3L-31-1288	Panel - RH Rear Engine, Full Length
3L-31-681	Frame Assy - Rear Side Service LH w/Inner Panel	3L-31-910	Door Assy - Fuel Compartment	3L-31-1289	Panel - Flat Full Length Ext. Engine Door LH
3L-31-682	Frame Assy - Rear Side Service RH w/Inner Panel	3L-31-911	Door Assy - Fuel Compartment w/Locking Filler Door	3L-31-1291	Door Assy - Rear Engine Access LH w/Flat Panel
3L-31-683	Frame S/A - Rear Side Service LH	3L-31-965	Panel - RH Rear Side Service	3L-31-1292	Door Assy - Rear Engine Access LH w/Flat Panel
3L-31-684	Frame S/A - Rear Side Service RH	3L-31-977	Frame S/A - Rear Side Service RH w/Key Lock	3L-31-1294	Door Assy - Rear Engine Access RH w/Flat Panel / Stainless
3L-31-685	Door Assy - Rear Side Service LH (Painted)	3L-31-978	Frame S/A - Rear Side Service LH w/Key Lock	3L-31-1295	Door S/A - Rear Engine Access RH / Stainless
3L-31-686	Door Assy - Rear Side Service RH (Painted)	3L-31-979	Frame Assy - Rear Side Service RH w/Inner Panel	3L-31-1343	Panel - Flat Upper Ext. Engine Door RH w/Lock Cut-Out / Stainless (Painted)
3L-31-687	Panel - Fluted Ext. Rear Side Service Door LH	3L-31-980	Frame Assy - Rear Side Service LH w/Inner Panel	3L-31-1344	Panel - Flat Full-Length Ext. Door RH w/Lock Cut-Out
3L-31-688	Panel - Fluted Ext. Rear Side Service RH	3L-31-981	Panel - Fluted Ext. Rear Side Service Door LH w/Lock Cut-Out	3L-31-1345	Panel - Ext. Door RH w/Key Lock
3L-31-697	Door Assy - Rear Side Service LH (Stainless)	3L-31-982	Panel - Fluted Ext. Rear Side Service Door RH w/Lock Cut-Out	3L-31-1346	Door Assy - Motor Access RH w/Key Lock / Painted
3L-31-698	Door Assy - Rear Side Service RH (Stainless)	3L-31-983	Panel - Ext. Door LH w/Lock Cut-Out	3L-31-1347	Door Assy - Rear Engine Access RH w/Flat Panel & Lock / Stainless
3L-31-709	Panel - Front Ext. Junction Box Door (Stainless)	3L-31-984	Panel - Ext. Rear Side Service Door RH w/Lock Cut-Out	3L-31-1348	Door Assy - Rear Engine Access RH w/Flat Panel / Stainless
3L-31-71	Panel - RH Rear Engine Door	3L-31-993	Door Assy - Rear Side Service LH w/Key Lock (Painted)	3L-31-1356	Lock Body Assy - Lock Bar Mechanism
3L-31-710	Panel - Front Junction Box Door (Painted)	3L-31-994	Door Assy - Rear Side Service RH w/Key Lock (Painted)	3L-31-1373	Door Assy - Rear Side Service LH w/Key Lock (Painted)
3L-31-711	Panel - Front Junction Box Door Exterior Flat w/Lock	3L-31-1020	Panel - Upper, LH Engine Door w/Lock	3L-31-1376	Door Assy - Rear Side Service RH w/Key Lock (Stainless)
3L-31-712	Panel - Front Junction Box Door w/Lock	3L-31-1021	Door Assy - Rear Engine Access RH w/Key Lock (No Upper Paint)	3L-31-1378	Door Assy - Rear Side Service LH w/Key Lock / Stainless
3L-31-737	Panel Assy - Ext., Junction Box Door w/One Receptacle	3L-31-1069	Frame Assy - Fuel Door	3L-31-1380	Panel - RH Rear Side Service Door
3L-31-738	Panel Assy - Junction Box Door Ext. w/One Receptacle Cut-Out (Stainless)	3L-31-1073	Door Assy - Fuel Filler w/Hinge	3L-31-1383	Panel - Ext. Door LH w/Lock Cut-Out
3L-31-739	Panel Assy - Junction Box Door Ext. w/Two Receptacle Cut-Outs (Painted)	3L-31-1074	Door Assy - Fuel Filler w/Hinge	3L-31-1386	Panel - Fluted Ext. Rear Side Service Door RH w/Lock Cut-Out
3L-31-740	Panel Assy - Junction Box Door Ext. w/Two Receptacle Cut-Outs / Stainless	3L-31-1143	Door Assy - Satellite LH	3L-31-1388	Panel - Fluted Ext. Rear Side Service Door LH w/Lock Cut-Out
3L-31-741	Panel Assy - Junction Box Door Ext. w/One Receptacle & Lock Cut-Out (Painted)	3L-31-1144	Door Assy - Satellite RH	3L-31-1453	Angle - Door Support Mount LH
3L-31-742	Panel Assy - Door Ext. w/One Receptacle & Lock Cut-Out	3L-31-1151	Door Assy - Rear Motor Access LH / Painted	3L-31-1454	Angle - Door Support Mount RH
3L-31-743	Panel Assy - Junction Box Door Ext. w/Two Receptacle & Lock Cut-Outs (Painted)	3L-31-1152	Door Assy - Rear Motor Access RH	3L-31-1457	Panel - RH Rear Engine Door
3L-31-744	Panel Assy - Junction Box Door Ext. w/Two Receptacle & Lock Cut-Outs / Stainless	3L-31-1153	Frame Assy - Rear Motor Access Door LH	3L-31-1458	Panel - LH Rear Engine Door
3L-31-755	Door Assy - Front Junction Box	3L-31-1154	Frame Assy - Rear Motor Access Door RH	3L-31-1492	Door Assy - Rear Engine Access LH w/Flat/Fluted Panels / Stainless
3L-31-748	Door Assy - Front Junction Box No Key w/One Receptacle (Painted)	3L-31-1158	Panel - Ext. Door LH	3L-31-1493	Door Assy - Rear Engine Access RH w/Flat/Fluted Panels / Stainless
3L-31-749	Door Assy - Front Junction Box No Key w/One Receptacle (Stainless)	3L-31-1159	Panel - Ext. Door RH	3L-31-1494	Panel - Fluted Lower Ext. Engine Door LH
3L-31-751	Door Assy - Front Junction Box w/One Receptacle Cover & Key Lock (Stainless)	3L-31-1164	Locking Bar - Upper	3L-31-1495	Panel - Fluted Lower Ext. Engine Door RH
3L-31-754	Door Assy - Front Junction Box Access w/Key Lock (Painted)	3L-31-1168	Frame - Back-Up Light Mount LH/RH	3L-31-1496	Panel - Satellite Door LH
3L-31-756	Door Assy - Front Junction Box No Key (Painted)	3L-31-1169	Door Assy - Blower / Fiberglass	3L-31-1497	Panel - Satellite Door RH
		3L-31-1194	Bracket - Door Support LH	3L-31-1499	Door Assy - Satellite LH
		3L-31-1196	Plate Assy - Door Locator Pin	3L-31-1500	Door Assy - Satellite RH
		3L-31-1213	Door Assy - RH Rear Side Service	3L-31-1583	Door Assy - Rear Engine Access LH w/Flat Panel / Stainless
		3L-31-1214	Door Assy - LH Rear Side Service / Painted	3L-31-1584	Door Assy - Rear Motor Access RH w/Flat Panel
		3L-31-1215	Frame S/A - RH Rear Side Service		
		3L-31-1216	Frame S/A - LH Rear Side Service		
		3L-31-1217	Frame Assy - RH Rear Service w/Inner Panel		
		3L-31-1218	Frame Assy - LH Rear Service w/Inner Panel		

# PARTS LIST

Part #	Description	Part #	Description	Part #	Description
3L-31-1586	Panel - Flat Upper Ext. Engine Door LH	3L-35-408	Panel - Lower Front	3L-35-1583	Radiator Inlet - RH w/Full Vents / ABS
3L-31-1587	Panel - Flat Upper Ext. Engine Door RH Painted	3L-35-428	Panel - Below Radiator Inlet LH	3L-35-1585	Seal - Foam, LH
3L-31-1595	Panel S/A - Ext.	3L-35-429	Panel - Below Radiator Inlet RH	3L-35-1586	Seal - Foam, RH
3L-31-1596	Panel - Upper, LH	3L-35-590	Panel - Front of Fuel Door	3L-35-1666	Radiator Inlet - LH w/Full Vents / ABS
3L-31-1601	Door Assy - Rear Motor Access LH w/Flat/Fluted Panels	3L-35-591	Panel - Rear of RH Rear WhlHsg	3L-35-1787	Panel - RH Tail Light w/Stop/Turn Light/Vents/ Glad Hand / Fiberglass
3L-31-1602	Door Assy - Engine, RH	3L-35-592M	Panel - Front of RH Rear WhlHsg	3L-35-2277	Panel - Tail Light LH LED / Fiberglass
3L-31-1603	Door Assy - Rear Engine Access RH w/Flat Panel & Lock / Stainless	3L-35-593	Panel - Lower, Ext. RH (Painted)	3L-35-2448	Panel - Tail Light RH LED / Fiberglass
3L-31-1604	Panel - Flat Upper Ext. Engine Door RH w/Lock Cut-Out /Stainless	3L-35-594	Panel - Rear of Condenser Door	3L-59-63X	Frame - Plain Floor (5 ft. Repair Section)
3L-31-1893	Spring - Torsion	3L-35-595	Panel - Front of Condenser Door	3L-59-576	Post - Rear of Baggage Compartment #3 LH
3L-31-2238	Door Assy - Satellite LH w/Cut-Outs	3L-35-597	Panel - Rear of LH Rear WhlHsg	3L-59-577	Post - Rear of Baggage Compartment #3 RH
3L-31-2239	Door Assy - Satellite RH w/Cut-Outs	3L-35-598	Panel - Front of LH Rear WhlHsg	3L-59-578	Post - Rear of Baggage Compartment #3 RH
3L-31-2240	Frame - Light	3L-35-599	Panel - Rear of RH Front WhlHsg	3L-59-583	Post Assy - Front Truss RH
3L-31-2243	Panel - Access Door LH	3L-35-600	Panel - Rear of LH Front WhlHsg	3L-59-592	Rail - Skid Below Baggage Door (61.875" Long)
3L-31-2244	Panel - Access Door Fluted LH	3L-35-603	Panel - Above RH Rear Side Service Door	3L-59-698	Post - Front of Battery Door
3L-31-2246	Panel - Access Door RH	3L-35-605	Panel - Above RH Rear Side Service Door	3L-59-699	Post - Rear of Battery Door
3L-31-2247	Panel - Access Door Fluted RH	3L-35-606	Panel - Rear of RH Rear WhlHsg	3L-59-728	Post - Baggage Door Jam LH/RH
3L-31-2256	Door Assy - Access, LH	3L-35-607	Panel - Rear of LH Rear WhlHsg	3L-59-738	Tube - Diagonal Tying Rear Bulkhead to Rear Post LH/RH
3L-31-2257	Door Assy - Access, RH	3L-35-608	Panel - Front of RH Rear WhlHsg	3L-59-2464	Post - Baggage Bay, Between #1 & #2
3L-31-2258	Door - Access, LH (Painted)	3L-35-609	Panel - Front of LH Rear WhlHsg	3L-76-30X	Rail - Below Side Windows (5 ft. Repair Section)
3L-31-2259	Door - Access, RH (Painted)	3L-35-610	Panel - Rear of Fuel & Battery Door	3M-29-90	Rod - Mounting Baggage Door Handle
3L-31-2265	Door - Radiator w/Logo Area	3L-35-612	Panel - Front of Fuel Door	3M-29-108	Eye Bolt
3L-31-2327	Door Assy - Rear Side Service RH	3L-35-613	Panel - Lower, Ext.	3M-31-885	Bumper - Rubber
3L-31-2328	Panel - Ext. RH	3L-35-614	Panel - Rear of LH Front WhlHsg	3M-32-360	Latch Pad
3L-31-2389	Panel - Engine Door, LH	3L-35-615	Panel S/A - Rear of RH Front WhlHsg	3R-20-14	Washer - Mylar (Pack of 100)
3L-31-2390	Panel - Lower, LH	3L-35-616	Panel S/A - Rear of LH Front WhlHsg	3R-21-21	U-Bracket
3L-31-2391	Frame Assy	3L-35-618	Panel - Front of Condenser Door	3R-21-29	End Plate - Bumperette
3L-31-2392	Door Assy - Engine, LH (Painted)	3L-35-621	Panel - Above Condenser Door	3R-29-13	Panel - Upper, Baggage Door
3L-31-2393	Door Assy - Engine, LH (Stainless)	3L-35-643	Panel - Rear of LH Rear Side Service Door	3R-29-14	Panel - Lower, Baggage Door
3L-32-43	Recessed Grip	3L-35-644	Panel - Rear of RH Rear Side Service	3R-30-10	Hinge - Rubber 28"
3L-32-89	Door S/A - Entrance Riveted	3L-35-651	Angle - Finishing Above LH Rear WhlHsg	3R-30-39	Channel S/A - Prop Mounting Welded
3L-32-100	Panel - Upper, Sedan Entrance Door w/Lock	3L-35-732	Panel - Below Radiator Inlet LH	3R-31-257	Panel, Lower, LH Engine Door
3L-32-180-0001	Door Assy - Entrance Less Lock & Upper Sash	3L-35-733	Panel - Below Radiator Inlet RH	3R-31-281	Lock Body Assy
3L-32-422-0001	Door Assy - Sedan Entrance	3L-35-750	Radiator Inlet - LH / Fiberglass	3R-59-108	Channel - Above Battery Door
3L-32-423	Door S/A - Entrance, Frame/Insulation & Ext. Panel	3L-35-751	Radiator Inlet - RH / Fiberglass	3R-59-59X	Rail - Skirt 5' Repair Section w/Holes
3L-32-424	Panel - Sedan Entrance Door	3L-35-761	Front Mask w/Plenum / Fiberglass	7L-7-10	Bezel - LH/RH
3L-33-1	Red Reflective	3L-35-805	Roof Cap - Rear 140" / Fiberglass	7L-7-156LED	Tail Lamp - Banana LED
3L-33-2	Reflector - Amber	3L-35-1096	Panel - Rear of LH Rear WhlHsg	7L-8-1189	Decal
3L-33-480	End Cap - Rubber	3L-35-1097	Panel - Front of LH Rear WhlHsg	7L-8-696	Decal
3L-35-2	Panel - Front of LH Front WhlHsg	3L-35-1098	Panel - Rear of RH Rear WhlHsg	DL3/D4505FMK	MCI DL3 to D4505 Front Mask Upgrade Kit
3L-35-4	Panel - Above Front WhlHsg RH/LH	3L-35-1099	Panel - Front of RH Rear WhlHsg	HB2/9007	Adaptor - Headlamp to OEM Harness
3L-35-8	Panel - Between Baggage & Rear of Battery	3L-35-1159	Panel - Lower, Rear of LH Rear Service w/Energy ABS Bumper		
3L-35-19	Panel - Above Condenser Door	3L-35-1167	Panel - Lower, Rear of RH Rear Side Service w/Energy ABS Bumper		
3L-35-22	Panel - Front of LH Rear WhlHsg	3L-35-1174	Seal - Foam Sealing Ext. Panel LH		
3L-35-140	Panel S/A - Front of Front WhlHsg RH w/Switch	3L-35-1175	Seal - Foam Sealing Ext. Panel RH		
3L-35-141	Panel - Front of RH Front WhlHsg w/Switch	3L-35-1178	Panel - Bumper Filler Rear LH		
3L-35-143	Door S/A - Ext. Entrance Door Switch Cover	3L-35-1179	Panel - Bumper Filler Rear RH		
3L-35-152	Trim Angle - Finishing Front LH Lower Corner at Front Bumper (Vertical)	3L-35-1219	Panel - Above Rear Side Service Doors		
3L-35-153	Trim Angle - Finishing Front RH Lower Corner at Front Bumper (Vertical)	3L-35-1220	Panel - Above RH Rear Side Service Door		
3L-35-155	Panel - Lower, Rear of RH Rear Side Service w/ Energy ABS Bumper	3L-35-1285	Cap Assy - Rear Ext. Roof 137" / Fiberglass		
3L-35-156	Panel - Bumper Filler Rear LH w/Energy Abs Bumper	3L-35-1286	Cap Assy - Rear Ext. Roof 140" / Fiberglass		
3L-35-157	Panel - Between Baggage Door	3L-35-1287	Panel - Rear of RH Rear WhlHsg		
3L-35-165	Panel - Rear of Condenser Door	3L-35-1287M	Panel - Rear of RH Rear WhlHsg		
3L-35-407	Panel - Upper Front	3L-35-1288	Panel - Rear of LH Rear WhlHsg		
		3L-35-1341	Panel - Upper, Rear of LH Side Service		
		3L-35-1342	Panel - Upper, Rear of RH Side Service		
		3L-35-1374	Panel - RH Tail Light w/ Stop/Turn Light / Fiberglass		
		3L-35-1376	Panel - LH Tail Light w/ Stop/Turn Light / Fiberglass		
		3L-35-1581	Panel - RH Tail Light w/ Stop/Turn Light w/Vents / Fiberglass		

# TERMS AND CONDITIONS OF SALE

## Pricing

All orders must total \$50.00 or more. Prices are subject to change without notice. Orders will be invoiced at the price in effect at the time of receipt of orders.

## Claims

If you receive damaged product from the carrier, you must make notation of damage with the carrier at time of receipt of product or you can refuse the entire shipment. Damage claims must be made within 10 days after receipt of product. IBP Industries, Inc. will not issue credit on any damaged product that has exceeded this ten day limit.

If you have been shorted items from your shipment, you must file a shortage claim within 2 days after receipt of product. IBP Industries, Inc. will not issue credit or reship product that has exceeded this two day limit.

## Warranty

The warranty period for each product starts on the date of original purchase. IBP Industries, Inc. warrants that on the date of original purchase this product will be free from defects in material or workmanship. If during the warranty period, this product is

found to be defective in material or workmanship, it will be repaired or exchanged at IBP Industries, Inc. option, with no additional product charge. Warranty does not include repair or exchange when a problem results from accident, disaster, misuse, abuse, non-IBP Industries, Inc. modification, improper installation, or normal wear and tear. For product not manufactured by IBP Industries, Inc., the warranty will match that of the original manufacturers. To obtain warranty service, you must during the warranty period, return the product, along with proof of original purchase, to IBP Industries, Inc. You must insure it or bear the risk of loss or damage in transit, prepay the shipping charges, and use the original shipping container or equivalent. IBP Industries, Inc. will pay return shipping charges within the contiguous forty-eight states.

## Product Returns

IBP Industries, Inc. will accept returned products under warranty or for credit within 30 days of product invoice date. Returns will not be accepted for special order product or custom made product. ALL RETURNS MUST HAVE A RETURN AUTHORIZATION NUMBER. To obtain a Return Authorization

Number, please contact our Customer Service Department at 800-468-5287. Returns after 30 days from invoice date are subject to a twenty-percent (20%) reconditioning and repackaging charge if necessary.

A copy of the packing list must accompany the returned product to ensure proper credit is issued. Product must be returned in the original packaging or its equivalent. You must insure the product or bear the risk of loss or damage in transit. IBP Industries, Inc. will not issue credit on lost or damaged product in transit to us.

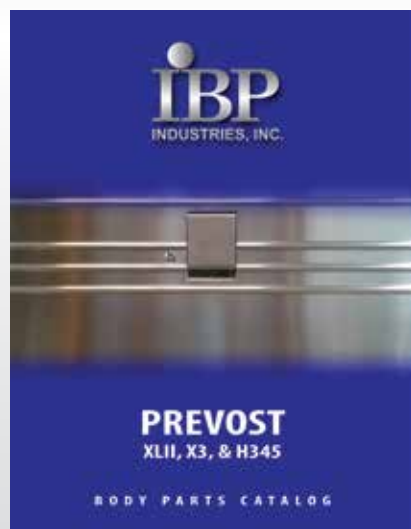
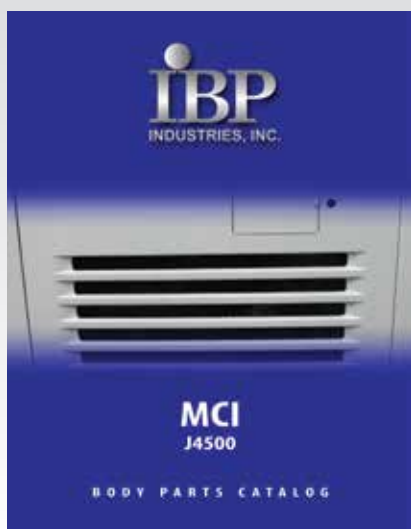
Our objective in defining these procedures is both to provide better and more efficient service, and to ensure that all our customers are afforded fair treatment resulting from a defined and consistent policy.

**IBP Industries, Inc.**  
**2055 Sprint Boulevard**  
**Apopka, FL 32703**

## NOTES:

---





**To Order**  
or for more information,  
contact our Customer Service Department

**800.468.5287**  
**[info@ibpindustries.com](mailto:info@ibpindustries.com)**

**[www.ibpindustries.com](http://www.ibpindustries.com)**

**January 2015**